

RECLAMATION

Managing Water in the West

Quantifying Drought Impacts

WSWC and CDWR Workshop

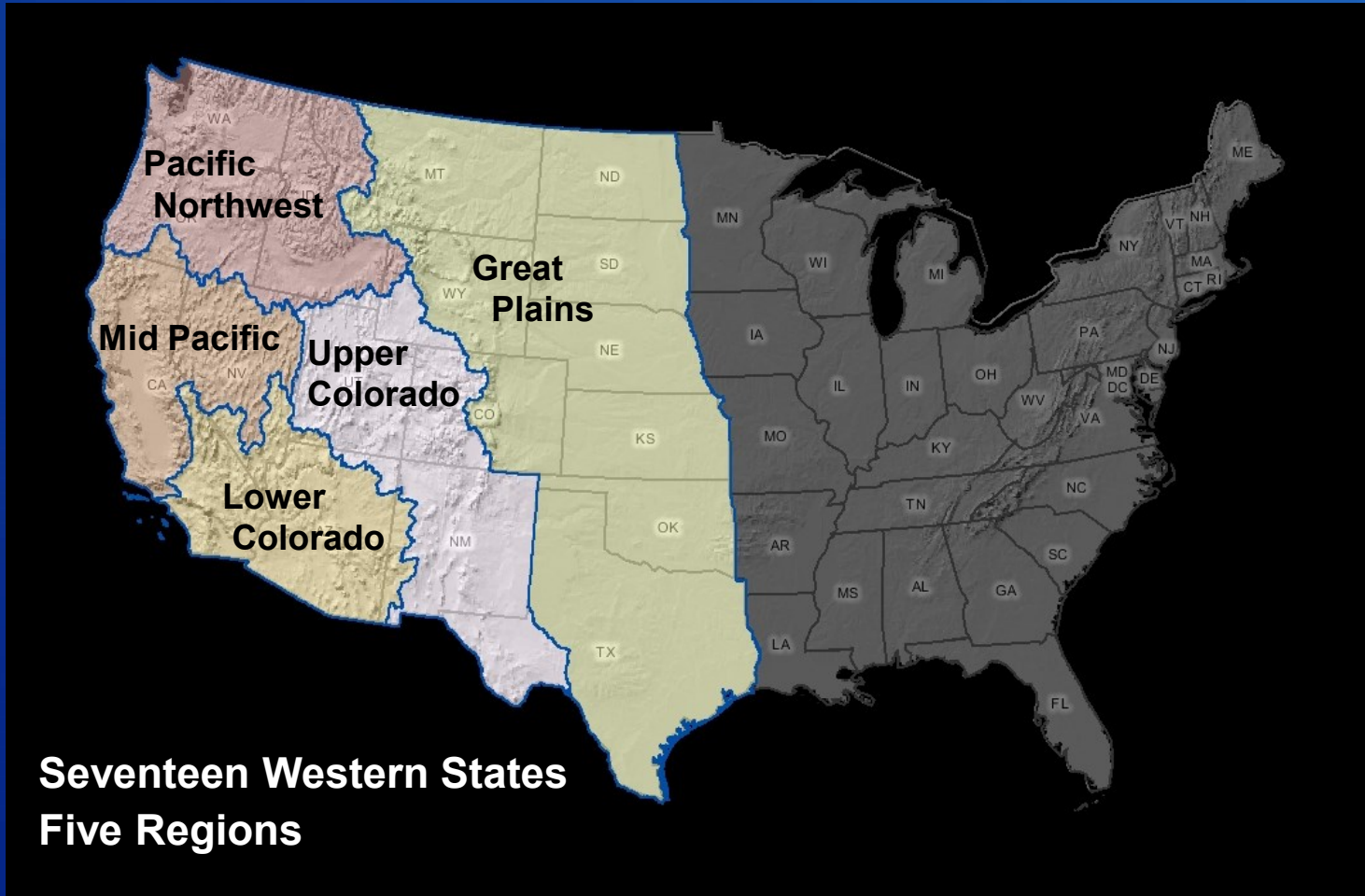
August 5, 2013

Dionne E. Thompson



U.S. Department of the Interior
Bureau of Reclamation

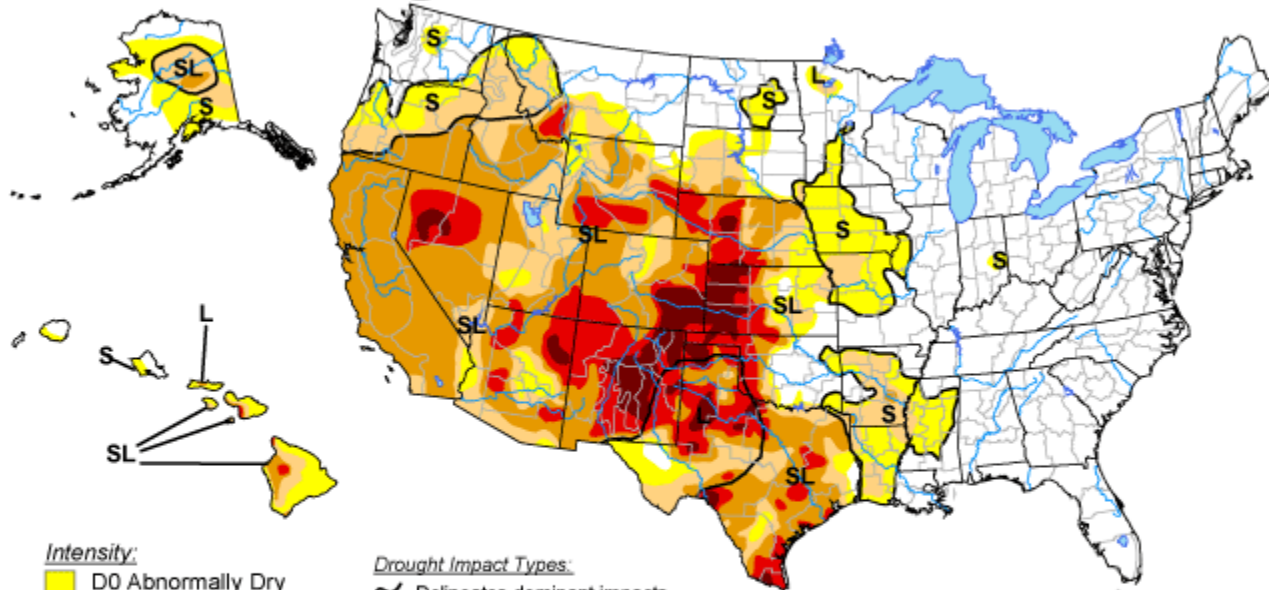
RECLAMATION'S JURISDICTION



U.S. Drought Monitor

July 30, 2013

Valid 7 a.m. EDT



Intensity:

- D0 Abnormally Dry
- D1 Drought - Moderate
- D2 Drought - Severe
- D3 Drought - Extreme
- D4 Drought - Exceptional

Drought Impact Types:

- Delineates dominant impacts
- S = Short-Term, typically <6 months
(e.g. agriculture, grasslands)
- L = Long-Term, typically >6 months
(e.g. hydrology, ecology)

The Drought Monitor focuses on broad-scale conditions.
Local conditions may vary. See accompanying text summary
for forecast statements.

<http://droughtmonitor.unl.edu/>

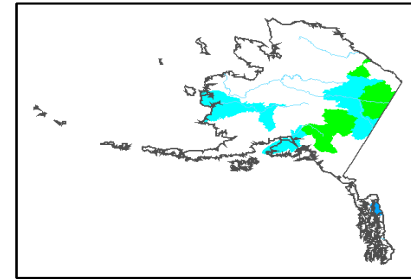


Released Thursday, August 1, 2013

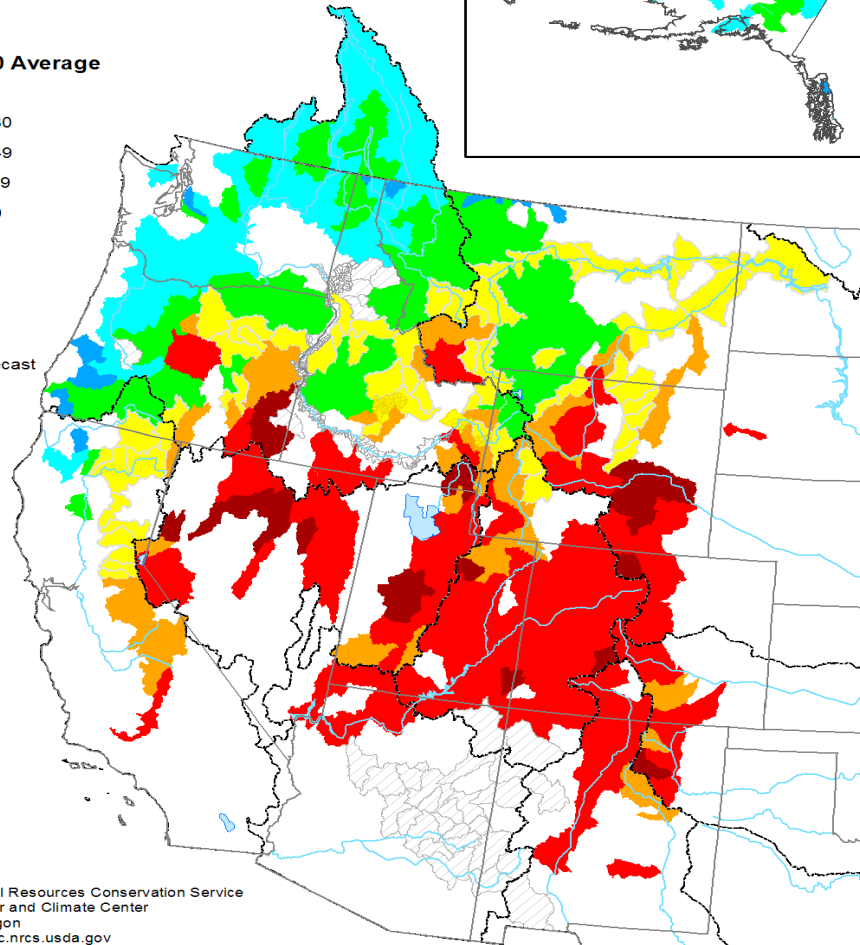
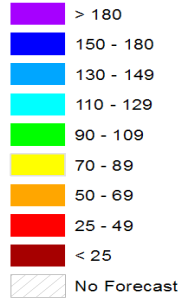
Author: Brian Fuchs, National Drought Mitigation Center

RECLAMATION

Spring and Summer Streamflow Forecasts as of May 1, 2012



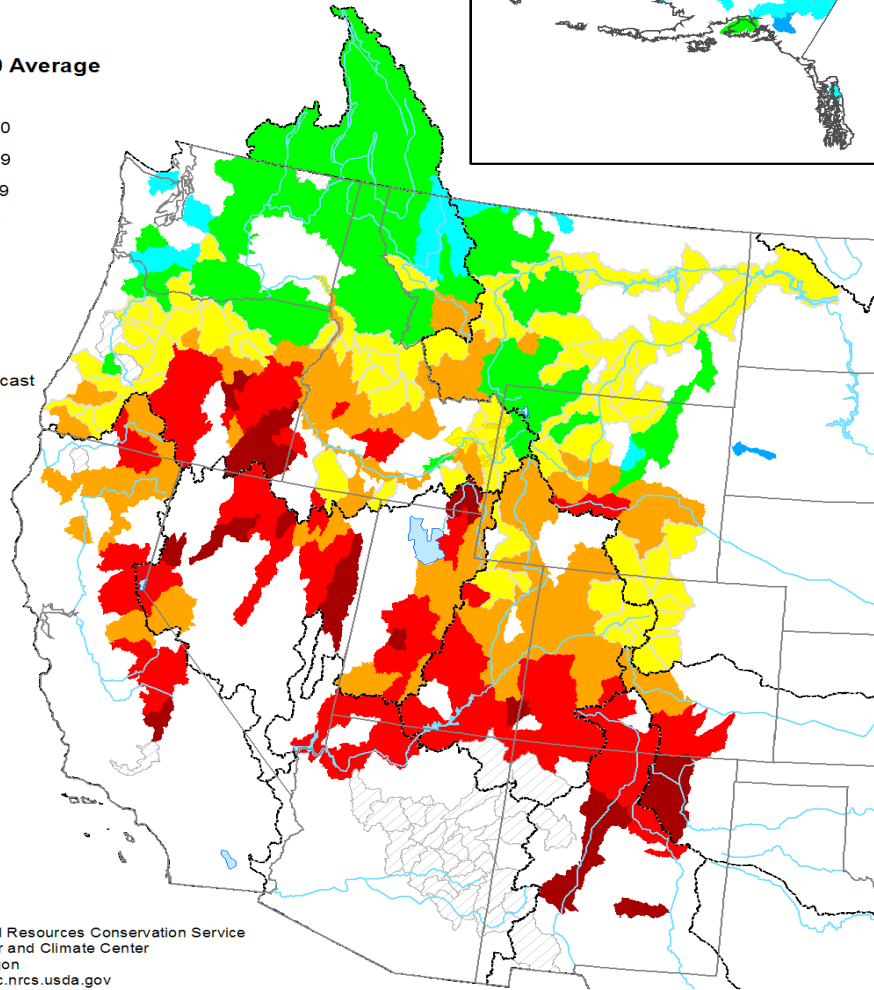
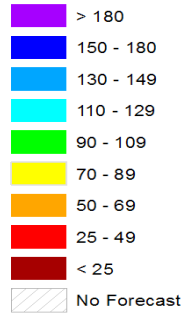
Percent
1971 to 2000 Average



Prepared by
USDA, Natural Resources Conservation Service
National Water and Climate Center
Portland, Oregon
<http://www.wcc.nrcs.usda.gov>

Spring and Summer Streamflow Forecasts as of May 1, 2013

Percent
1981 to 2010 Average



Prepared by
USDA, Natural Resources Conservation Service
National Water and Climate Center
Portland, Oregon
<http://www.wcc.nrcs.usda.gov>