



Western States Water Council Water Data Exchange (WaDE) Project

FY2013 Exchange Network Grant Partners
"GRANT RECEIVED!!" Meeting

Sept. 6, 2013

Welcome Back!

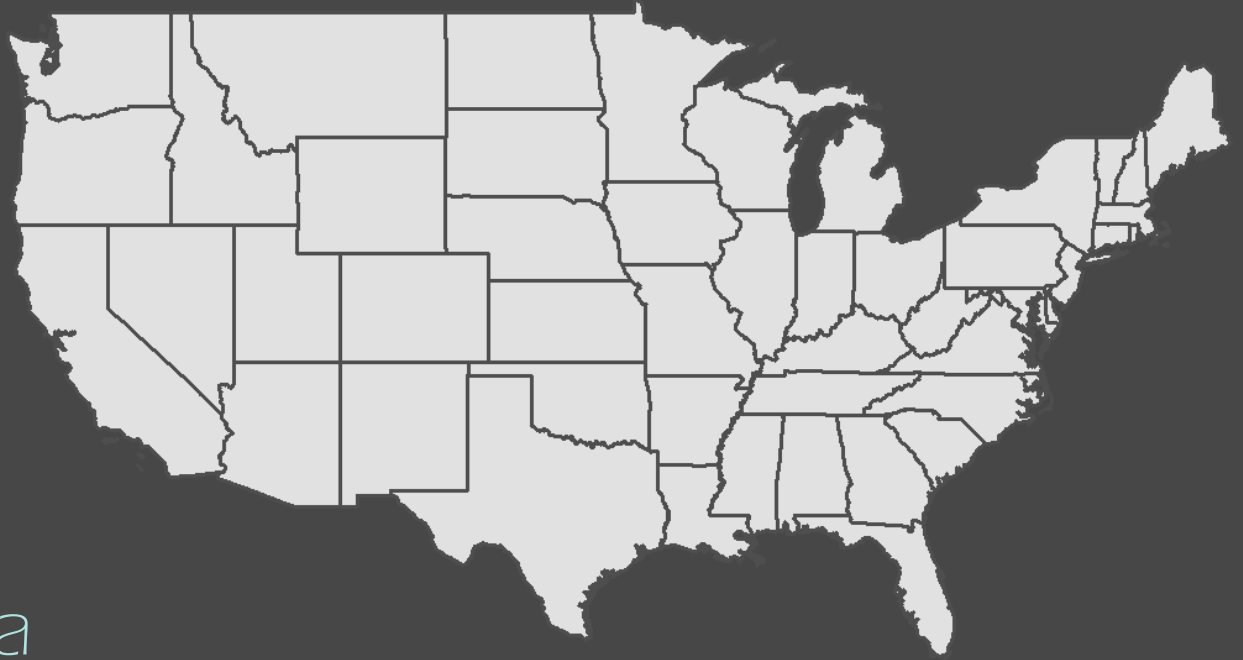


Data Sharing in the West

Water Needs and Strategies for a Sustainable Future: *Next Steps*



State Water Agencies



Streamgauge Data

Basin Budgets & Water Supply Summaries

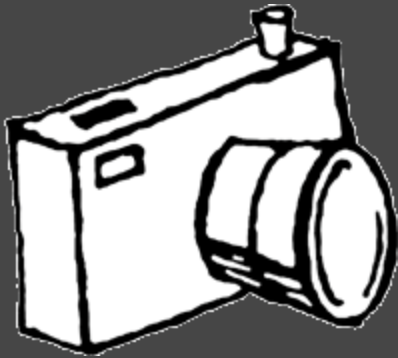
Water Availability Estimates

Diversions and Consumptive Uses

Allocations (Water Rights/Permits)

Water Data Exchange (WaDE)

What are the Big Picture Goals?



To better enable the states to share important water data with each other, the public and federal agencies.

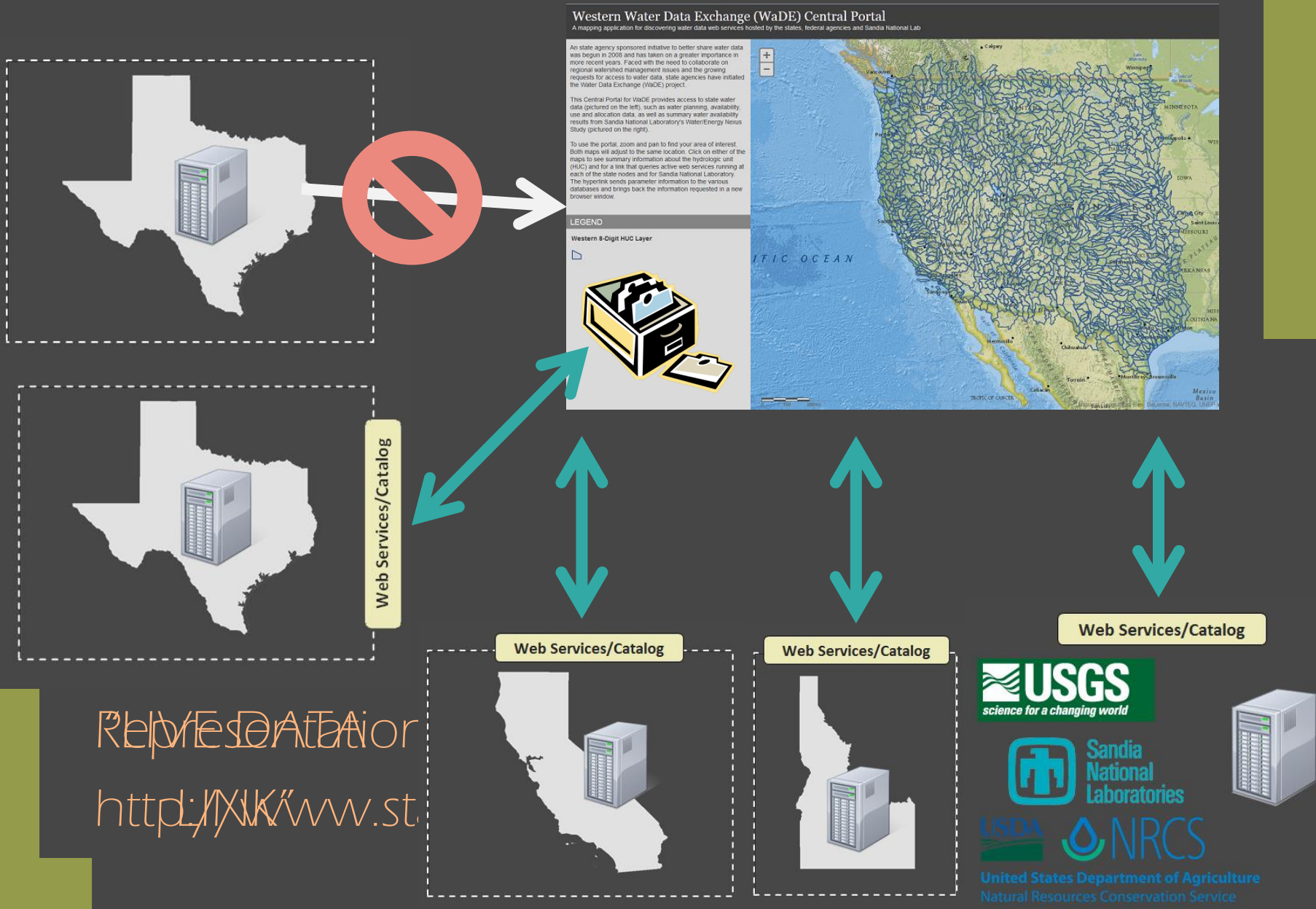
To improve the sharing of federal data with the states, to assist their planning efforts

On a Smaller Scale...

- 1) Get a handle on the variability between states
- 2) Develop a common data schema (common format for planning data)
- 3) Show how the data exchange will work
- 4) Encourage other partners to share data by adopting standardized formats



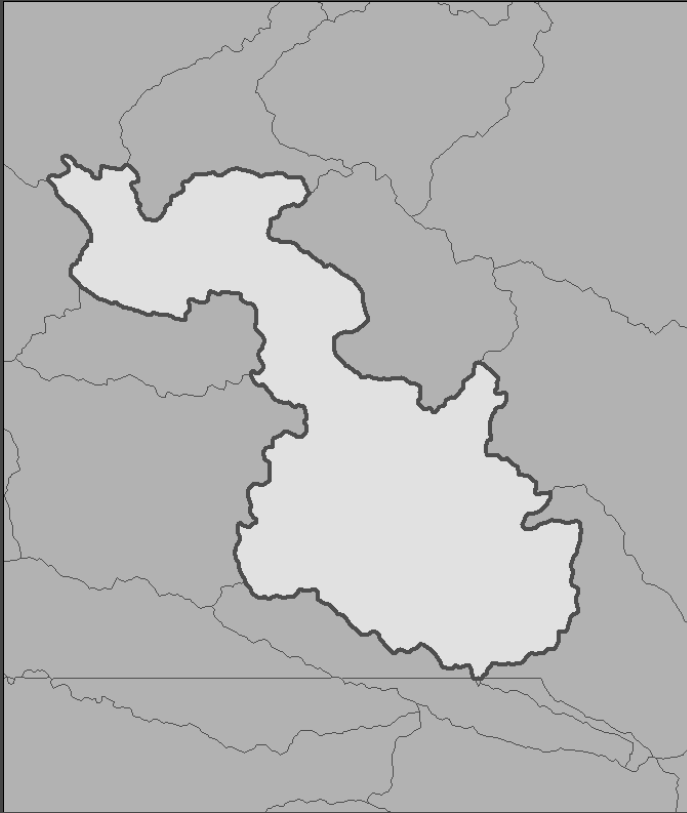
HOW DOES IT WORK?



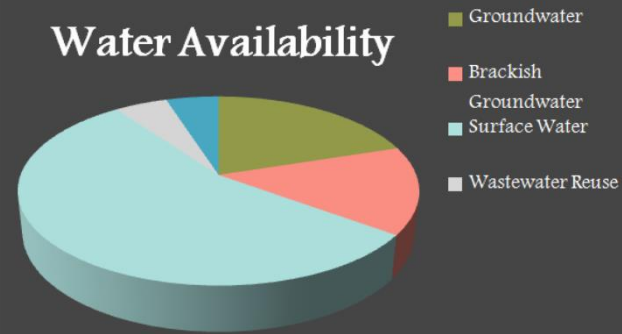
Representation
<http://www.st>

WHAT WILL IT PROVIDE?

REPORT – 2012 – Summaries
Availability Summary: 7,550 acre-feet

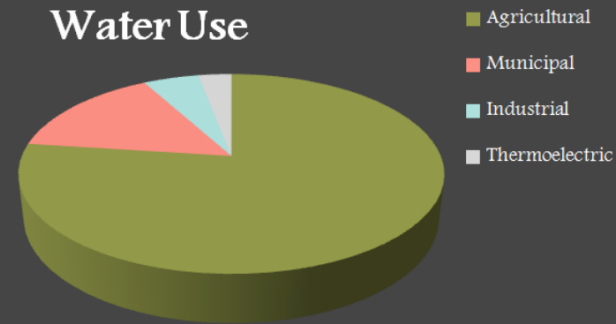


Water Availability



Water Use Summary: 2,850 acre-feet

Water Use



Water Supply Summary: 24,000 acre-feet

Regulatory Summary:

- Groundwater Management Area
- Minimum Instream Flow Requirements

REPORT – 2012 – Details

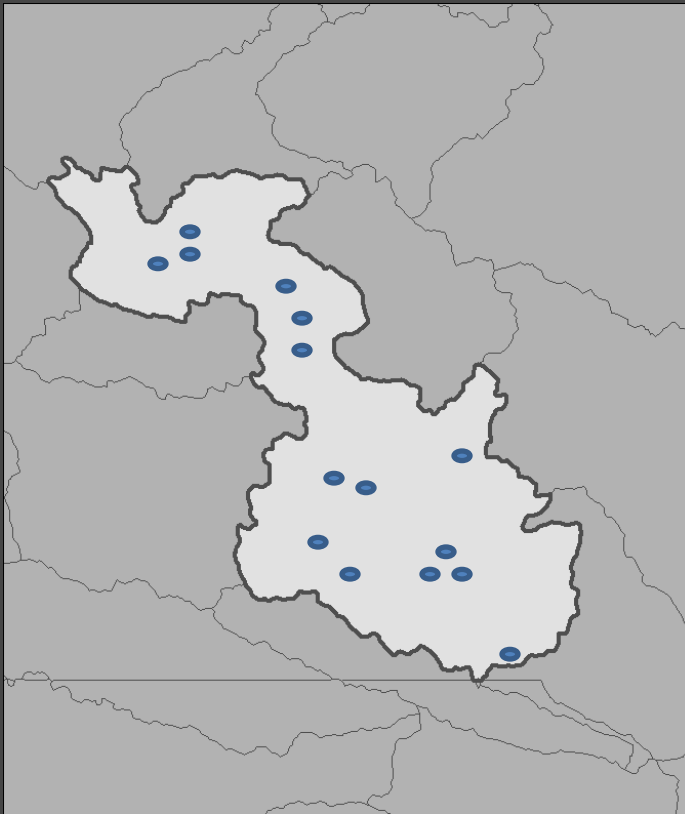
Allocation Data

- Owner
- Beneficial Use
- Status
- Priority Data

Diversions

Uses (withdrew)

Return Flows

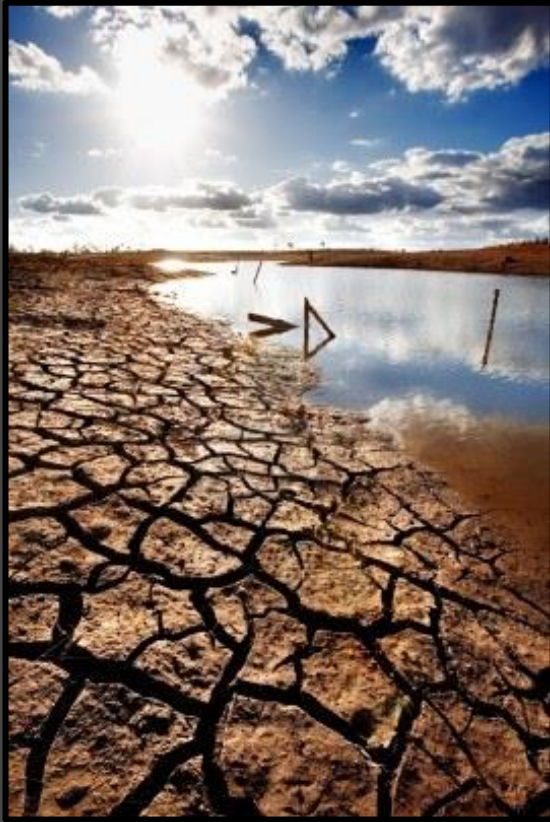


```
<?xml version="1.0"?>
<catalog>
  <book id="bk101">
    <author>Gambardella, Matthew</author>
    <title>XML Developer's Guide</title>
    <genre>Computer</genre>
    <price>44.95</price>
    <publish_date>2000-10-01</publish_date>
    <description>An in-depth look at creating app
with XML.</description>
  </book>
  <book id="bk102">
    <author>Ralls, Kim</author>
    <title>Midnight Rain</title>
    <genre>Fantasy</genre>
    <price>5.95</price>
    <publish_date>2000-12-16</publish_date>
    <description>A former architect battles corpor.
an evil sorceress, and her own childhood to bec
```

FUTURE STEPS:
States plugged in,
streamgaging,
etc. federal data,
too.



WHY IS IT SO IMPORTANT?



Sandia
National
Laboratories



Federal agencies, farmers,
journalists, politicians,
academics... anyone who
wants to know about
their water...

With population growth,
greater competition, energy
security, food security, drought,
climate change...

... questions about
water availability
will only increase!

FY 2013 EN Grant - \$500,000

State partners are Oregon, Washington, Idaho, Oklahoma and Texas. Also have four volunteer pilot states, UT, WY, NM and NE. 9 out of 17!!

State	Agency	Task	Type of Funding
	WSWC	Continued WaDE Development and Tasks 1.1 - 4.2	Personnel
		Travel to Partner States, EN Conference	Travel
		Task 1.6 Oracle Database Development	Contractual
		Task 2.2 - 2.4 Contractor Assistance	Contractual
TEXAS	TCEQ	Travel to EN Conference	Travel
		Tasks 2.1 - 2.4 Contractor Assistance - DB Migration	Contractual
OKLAHOMA	OWRB	Task 2.2 EN Node Assistance - Oracle DB Assistance	Contractual
		Task 1.1 - 4.1 Staff Time	Personnel
IDAHO	IDWR	Task 1.1 - 4.1 Staff Time	Personnel
		Webserver Purchase	Equipment
		Travel to EN Conference	Travel
OREGON	OWRD	Task 2.2 Staff Time	Personnel
		Webserver Purchase	Equipment
		Travel to EN Conference	Travel
WASHINGTON	WECY	Task 1.2 - 4.1 Staff Time	Personnel
		Travel to EN Conference	Travel
Total WaDE Grant Budget			

Agenda for the Call

1) Review your grant estimates. Verify the amounts and your timeline.

	FY 2014		FY 2015		FY 2016	
	10/2013 - 3/2014	4/2014 - 9/2014	10/2014 - 3/2015	4/2015 - 9/2015	10/2016 - 3/2016	4/2016 - 9/2016
TEXAS	Tasks 2.2 - 4.1					
OKLAHOMA						
IDAHO	Tasks 2.2 - 2.4		Tasks 3.1 - 4.1			
OREGON						
WASHINGTON			Tasks 2.2 - 2.4		Tasks 3.1 - 4.1	

2) Review TCEO's legal requirements for distributing the funds and sample contract

3) Provide feedback on your agency's legal requirements for receiving funds.

4) Review "Roles" for WaDE/EN Grant Partner Steering Committee.

ACTION ITEMS for each grant partner agency:

- 1) Review appropriate staff members for “Roles” on the Steering Committee.
- 2) Identify Legal and Contracting/Accounts Receivable contacts to ensure pass-through grants (aka EPA sub-awards) are compliant with applicable rules and procedures of EPA, TCEQ, and your agency.
- 3) Review your grant estimates. Verify the cost estimates and timeline for completing the tasks.

Call/email Sara or Jurgen with any questions...

Sara Larsen saralarsen@wswc.utah.gov 801.685.2555

Jurgen Koch jurgen.koch@tceq.texas.gov 512.239.2309