



Nebraska's

Natural Resources Districts



NRD Water Management in Nebraska

Western States Water Council

Lied Lodge

Nebraska City, NE

April 14, 2017

Dean E. Edson

Executive Director

Nebraska Association of Resources Districts

“Protecting Lives, Protecting Property and Protecting the Future”

Presentation Overview

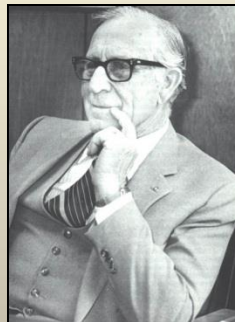
1. Nebraska Natural Resources Districts (NRDs)
2. Nebraska Water Law
3. NRD Groundwater Management for Quality and Quantity
4. Integrated Management Plans (IMPs)
5. Projects & Funding
6. Questions and Answers

Creation of the NRD System

- In April 1969, four senators introduced LB1357 in order to consolidate 154 special-purpose districts into a series of multipurpose districts based on river basin boundaries.
- Unique to Nebraska
- Law became effective in 1972

Primary Sponsor of L.B. 1357:

- *Maurice Kremer* (Aurora)



What Does a NRD Really Do?...

12 Statutory Responsibilities:

- 1) Erosion prevention and control
- 2) Prevention of damages from flood water and sediment
- 3) Flood prevention and control
- 4) Soil conservation
- 5) Water supply for any beneficial uses
- 6) Development, management, utilization, and conservation of ground water and surface water
- 7) Pollution control
- 8) Solid waste disposal and sanitary drainage
- 9) Drainage improvement and channel rectification
- 10) Development and management of fish and wildlife habitat
- 11) Development and management of recreational and park facilities
- 12) Forestry and range management.



NRD Boundaries

- Established by the Nebraska Natural Resources Commission in 1971.
- Stay close to basin boundaries but follow county roads so fields are not divided.
- Use county boundaries when possible to divide basins into NRDs
- Boundary can change 3 ways
 - 1) Landowner petition to local NRDs.
 - 2) NRD agreement with input from landowners.
 - 3) Landowner petition to the Commission.

NRD Board Structure

- Locally elected at the general election
- Any eligible voter can run
- Board size – 5 -21 members (set by the local board)
- 321 board members total
- Elections by Sub districts and/or at large
- Statute allows for 3 to 1 ratio but most at 1 person – 1 vote

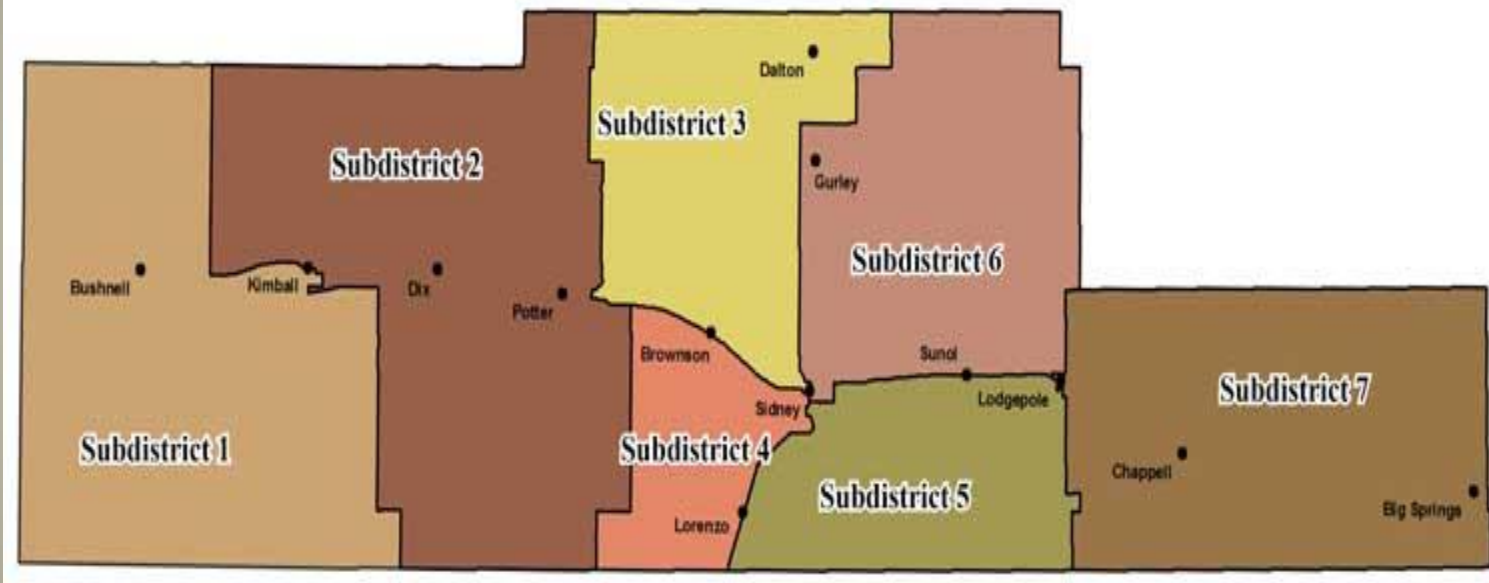


South Platte NRD



Sub-districts are updated every 10 years from census data

South Platte NRD Board Subdistrict Area Map



NRD Board Meetings

- Monthly Public Meetings
- Public Notice and follow the Open Meetings Act
- Public comment is allowed at each meeting
- Special hearings on development of regulations and plans – open to the public and public comments

NRD Employees

- 360 employees
- Various specialist – Business managers, groundwater technicians, engineers, hydrologist, soil conservationist.
- NARD provides some training and certification programs for employees
- All full-time employees are provided health insurance & retirement benefits.

Nebraska Water Law

- The water owned by the state and is dedicated to the people of the state for beneficial purposes.
- Permits are granted for use by the Department of Natural Resources (DNR) and NRDs.
- Different doctrines and laws apply depending on the use.
- Preference system applies to all – 1) Domestic, 2) Agriculture, 3) Manufacturing, 4) Other

Surface Water Rights





Surface Water Rights – Prior Appropriation Doctrine

- ***Set up to encourage settlement of the territory and the State of Nebraska.***

Surface Water Rights – Prior Appropriation Doctrine

- *First in Time, First in Right*
- *Oldest water rights are 1895.*
- *Senior water rights (oldest) get's all of their right first.*
- *Preference may trump, and payment may be required.*
- *Administered by NDNR*



Groundwater Rights - Correlative Rights Doctrine

- *The right to use groundwater on the overlying land as long as it does not harm someone else.*
- *Permitted and regulated by local Natural Resources Districts (NRDs) with a few exceptions for municipal and interstate transfers.*
- *All users share in any shortage*
- *Amounts to 90% of the irrigation total and uses about 70% of the irrigation water.*



Groundwater Rights - Correlative Rights Doctrine

- *Nebraska has 8.3 million irrigated acres.*
- *Number 1 in the US.*
- *2015 Report -- 1% groundwater decline since pre-development.*
- *2016 – Close to predevelopment.*



Groundwater Rights - Correlative Rights Doctrine

- *All 23 NRDs have a Groundwater Management Plan approved by DNR and DEQ.*
- *Local NRD rules and regulations in place to manage for quantity and quality.*
- *Can go to allocations if declines in water tables are severe.*
- *Can impose regulations for quality.*



Groundwater Quality Management Plans and Regulations

- Approved by NDEQ for Quality
- Developed with hearings and public meetings
- Implemented in Phases depending on issues
- Applies in subareas where problems exist
- Phase 1 - Basically educational programs. - Nitrates below 5 ppm.
- Phase 2 - Nitrates over 5 ppm but below 10 – mandatory soil testing, applicator certification, water testing, annual reports, ban on fall and or winter applications.

Groundwater Quality Management Plans

- Phase 3 - Over 10 ppm Nitrates.
- Same requirements as Phase 2 plus:
- Management plans on fertilizer applications required. Must account for all existing nitrogen sources for the crop.
- Irrigation with high nitrate water can provide most of the nitrogen supply.
- Save farmers money and remediates the problem

Groundwater Quality Management Plans and Regulations

- Phase 4 – Not implemented anywhere in Nebraska yet.
- Nitrates still increasing after Phase 3 implantation.
- All of Phase 2 & 3, plus it can include a complete ban on all commercial fertilizer applications.
- Provides incentives to producers, dealers and consultants to work on remediation.

Groundwater Quality Management Chemigation Program

- NRDs issue permits and regulate Chemigation applications (injection of fertilizers or pesticides into irrigations systems).
- Incorporated into Groundwater Management Regulations
- Coordinated with NDEQ
- Applicators must have all check-valves and safety equipment.
- Applicators must be licensed – training by UNL and NRDs.
- Permit Fee set by the local NRD
- Fines for no permit can be up to \$5,000 a day.

Groundwater Quantity Management Plans & Regulations

- All districts require certification of irrigated acres.
- What is listed as irrigated for FSA may not be listed as irrigated for property tax purposes.
- Crucial to get a true accounting of irrigated acres.
- All plans and regulations are developed with hearings and public meetings

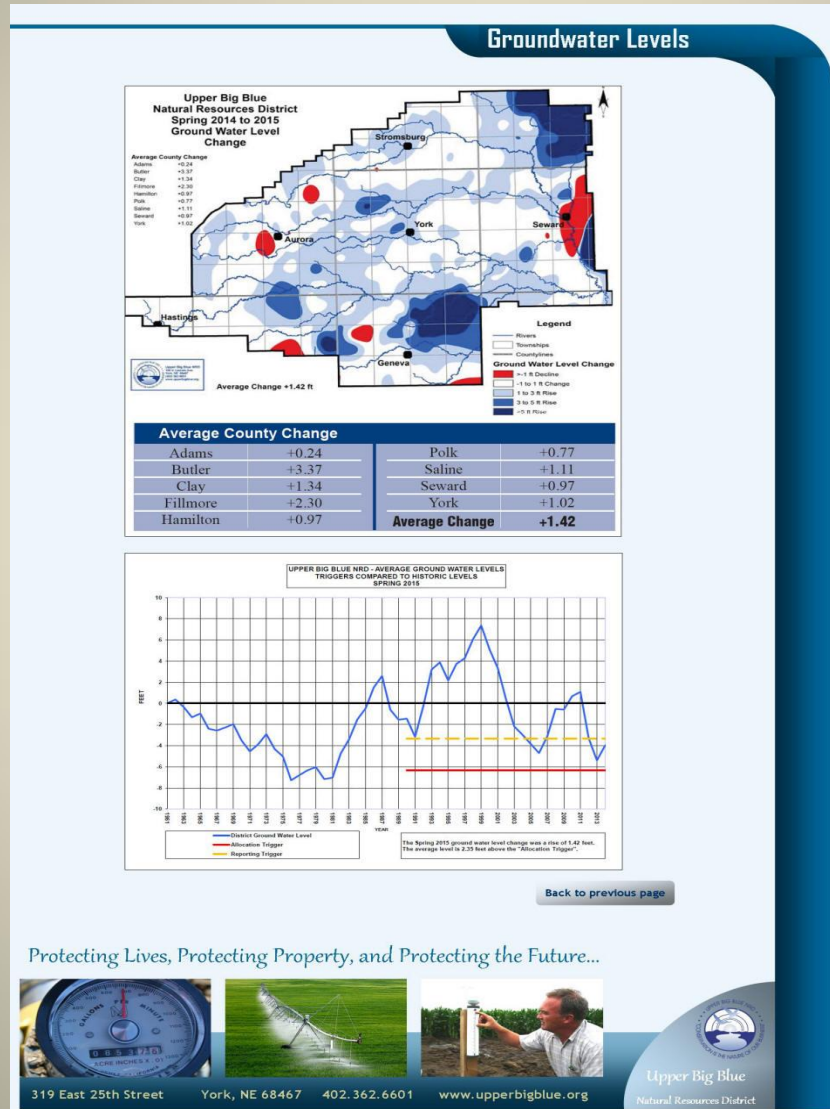
Groundwater Quantity Management Plans & Regulations

- Well permits over 50 gpm required by the NRD.
- Can require new wells to be drilled to a minimum depth
- Well spacing requirements to prevent interference with other users.
- NRDs can limit or ban additional development of irrigation in areas where water quantity problems exist.
- Groundwater levels are monitored to aid in management decisions.

Groundwater Quantity Management Plans & Regulations

- All plans have trigger levels based on groundwater levels for additional regulation.
- If levels decline
 - moratoriums on additional irrigated acres.
 - Allocations on use (3 or 5 year allocations)
 - Can require a reduction in irrigated acres

Historical and accurate data is key



Groundwater Quantity Management Plans & Regulations

- Plans include variance requests and transfers
 - Temporary uses
 - Transfer of certified irrigated acres to allow producers to use center pivots and/or move irrigation off marginal ground.
 - transfers and variances are up to the local NRD to address local issues. May be limited.
 - NRD run water banking programs for producers that want to voluntarily retire irrigated acres (with payment) for future uses.

NRD Programs -- Integrated Water Management Plans (IMPs)

- Mandatory for fully or over appropriated as determined by the Nebraska Department of Natural Resources (10 of 23).
- Voluntary for NRDs not fully appropriated (11 of 13).
- All 23 Districts have or are developing IMPs



NRD Programs -- Integrated Water Management Plans (IMPs)

- *Joint management plan between DNR and NRDs.*
- *Sustain a balance between basin water supplies and uses (both ground and surface water)...*
- *...to sustain the economic viability and environmental and social health, safety, and welfare of the basin...*
- *Includes Basin Management Plans to coordinate with all NRDs in the basin.*



Plan Development -- IMP Stakeholders

- Irrigation and reclamation districts, mutual irrigation and canal companies
- Public power and irrigation districts
- Municipalities
- Groundwater irrigators
- Other stakeholders deemed appropriate by NRD or DNR
- Hearings and public meetings



IMP Development

Data for decision making is crucial.

- UNL, USGS, other government entities
- Private sector – Engineering firms, consultants

Data must be constantly improved and updated.

- UNL, USGS, other government entities
- Private sector – Engineering firms, consultants.

Technical Study Support for IMPs

- What are the future impacts of current levels of development?
- What are the water supplies and how variable are those supplies?
- What are the demands on water supplies? (both current and future projections)
- What, if any, excess water supplies exist?
- What are the economic costs & benefits of the various uses of water?

Integrated Management Plans Are Not Required to Include

- Restrictions on current users (allocations, reduced irrigated acres, etc).
- Moratoriums on new uses.
- Restrictions on municipal and industrial development.

Implementing and IMP

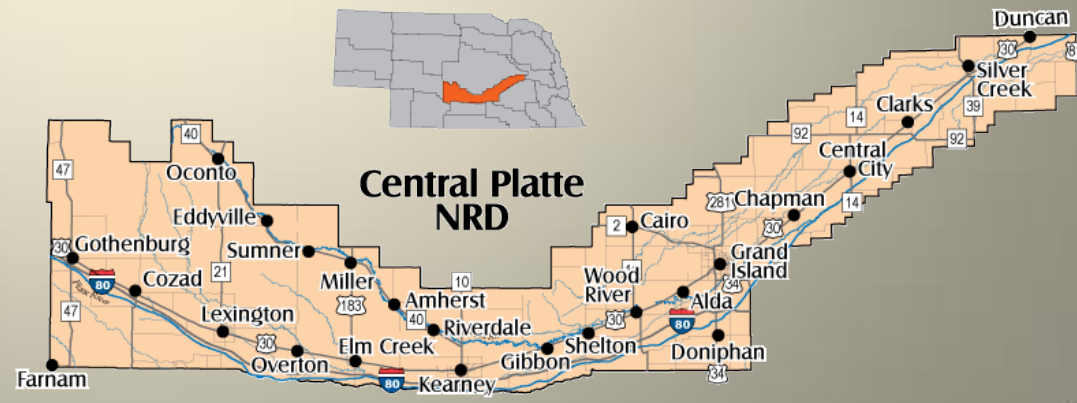
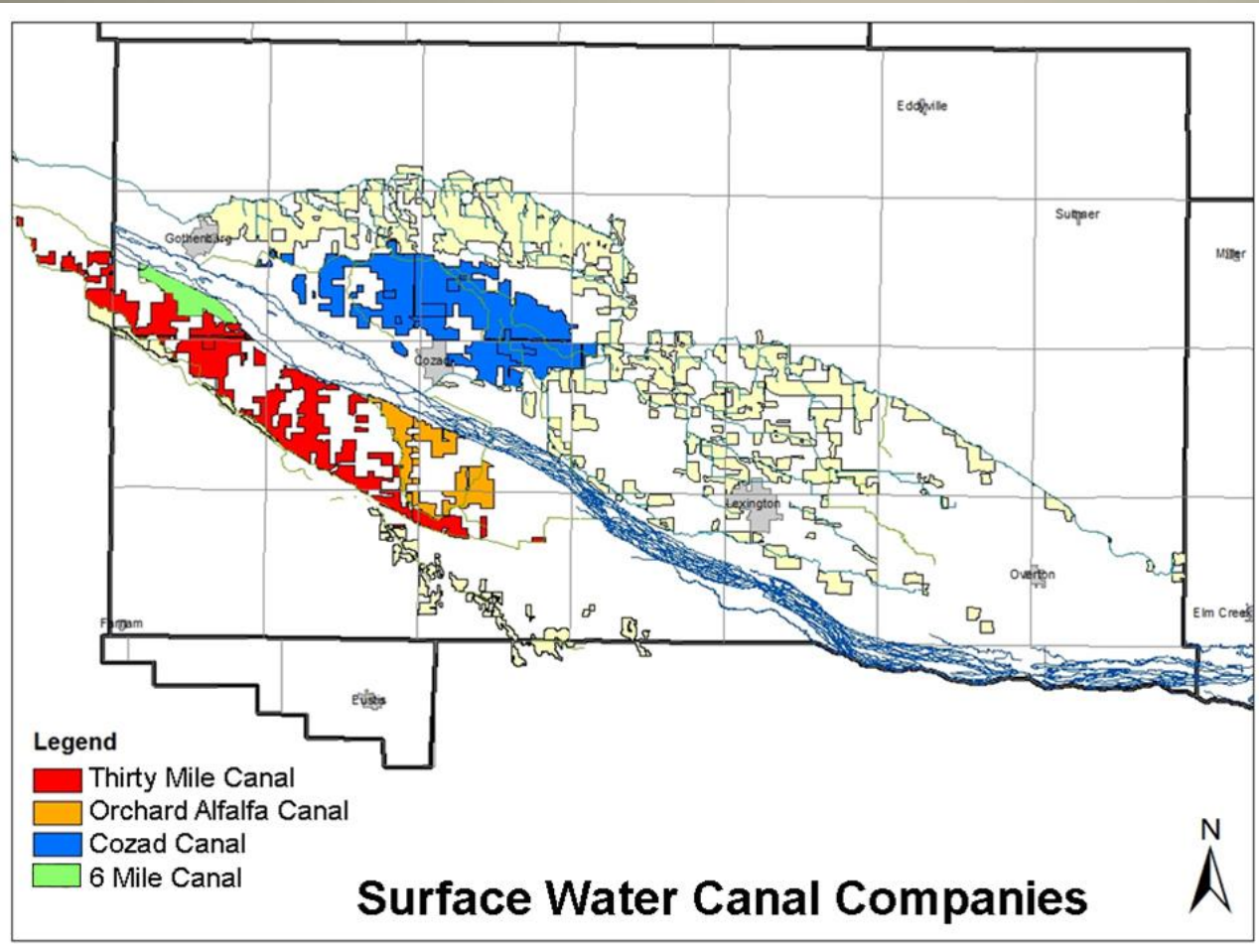
- Must include a groundwater (NRD) and surface water (NDNR) control.
- NRD Groundwater Management Plans and Regulations are modified to meet the goals and objectives of the IMP.
- Measurable goals and objectives

Monitoring Components of an IMP

- Must have measurable goals and objectives.
- Annual meetings to report and review results.
- Hydrologic data crucial and must be updated and improved.
- What changes are water users making on their own to improve efficiency?
- How can we create programs to encourage more?

Project Examples: Central Platte NRD - and surface water irrigation companies

- About 75% of the Surface Water Irrigators have switched to Groundwater irrigation.
- Form Partnerships and return excess flows to the Platte River.
- Four canal companies in Dawson County with about 45,000 acres.



Six Mile Canal

Agreements Completed

- Complete Buy-Out
 - Natural flow irrigation rights in process of being transferred to Thirty Mile Canal.
 - Recharge for groundwater supply or groundwater quality not necessary.



The Six Mile Irrigation Canal at its peak, provided irrigation water to approximately 1,700 acres and multiple landowners.



After the removal of the canal, field rows are longer which saves farmers time and fuel.

Cozad Canal, 30 Mile & Orchard

Agreements Completed

- Management/Lease
- 50-50 Ownership
- Long-term Inter-local Agreements
- Over 30,000 acre-feet back to the river with no reduction in irrigated acres.
- Project still provides groundwater recharge
- Divert flood water in off-irrigation season for recharge.

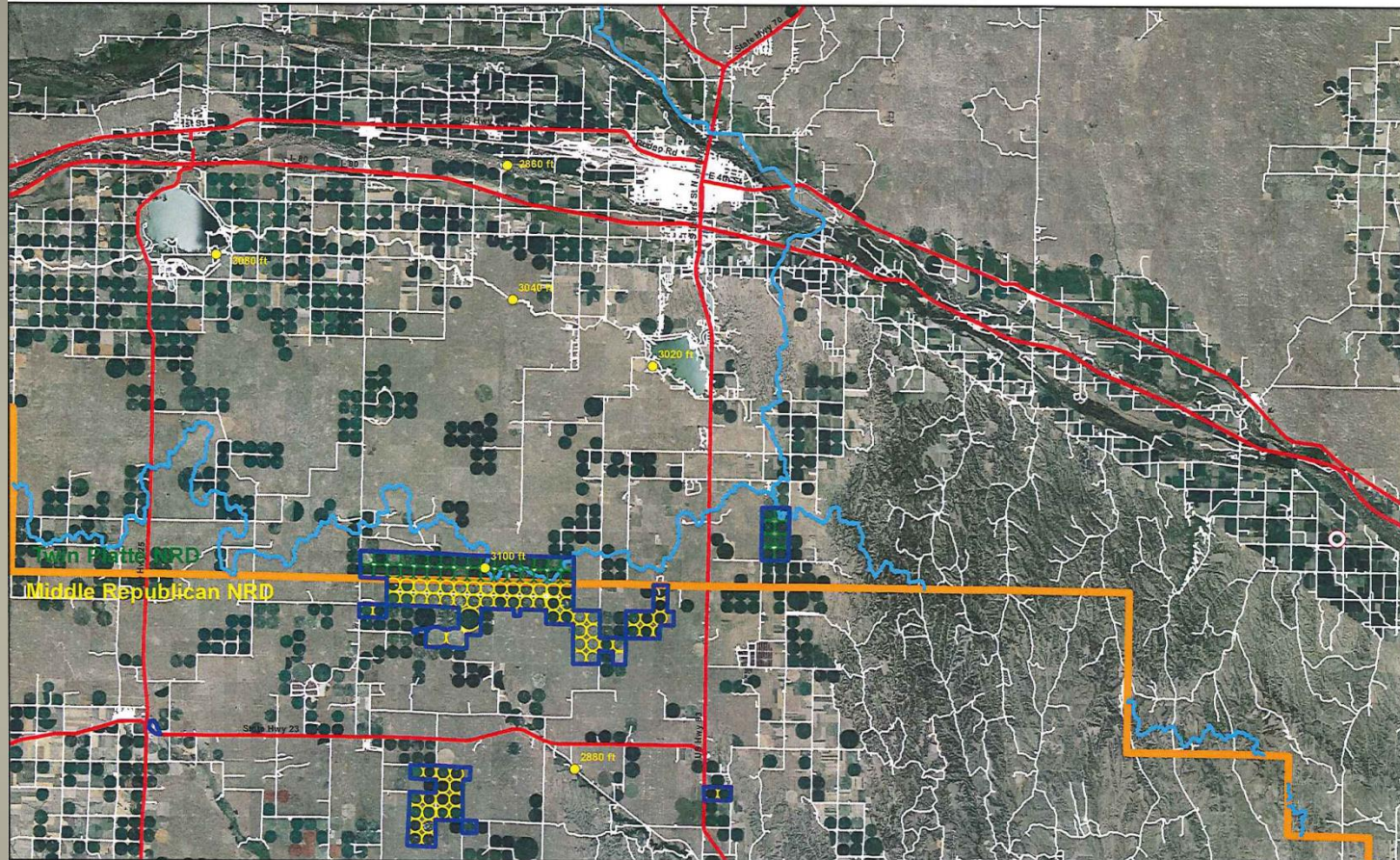


Cozad Canal before clean up.



Cozad Canal after tree removal and cleanup.

Nebraska Cooperative Republican Platte Enhancement Project N-CORPE



— Watershed Boundary
— Farm Boundary

0 3 6 12 Miles

CERTIFIED IRRIGATED ACRES
Twin Platte NRD - 5,363.4 acres
Middle Republican NRD - 10,433.6 acres

Date: November 20, 2012
By: Phil Heimann
Sources: TPNRD, MRNRD, DNR

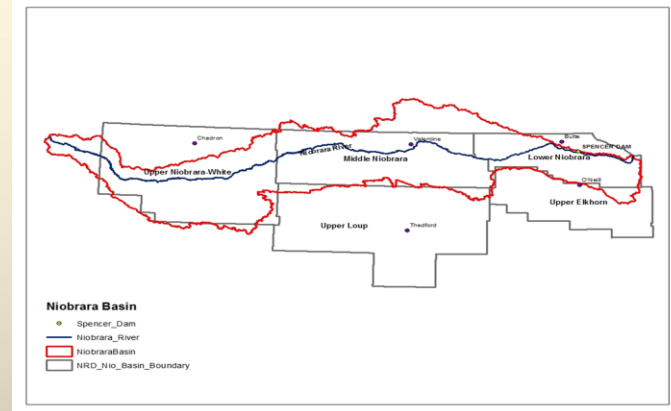
Project Examples: N-CORPE - Nebraska Cooperative
Republican Platte Enhancement Project

N-CORPE - Nebraska Cooperative Republican Platte Enhancement Project

- 15,784 certified irrigated acres
 - Republican -10,240 acres; Platte 5,364 acres
- Purchase Price - \$5,258/irrigated acre
- Groundwater levels are increasing in the area.
- Twin Platte, Upper, Middle and Lower Republican NRDs (25% share each)
- All acres back to grass
- Water pumped only in water short years – less than amount originally used for irrigation.
- The water is banked in normal or wet years.

Project Example: Niobrara River

- ***Designated as a National Scenic River in Nebraska.***
- ***Originates by Lusk, Wyoming***
- ***500 miles across northern Nebraska***
- ***Confluence with the Missouri River by Niobrara, NE***



Water Challenges – Niobrara River

- *Nebraska Public Power District holds essentially all of the water rights (over 2,000 cfs) for a small power plant at the lower end of the river.*
- *The dam for the hydro is not stable enough to run both turbines at the same time.*
- *Annual electricity generation is about equal to one wind tower.*



Water Challenges – Niobrara River

- *Agreement reached by NRDs, Nebraska Game and Parks and NPPD to purchase the water right and convert part to instream flow rights for fish, wildlife and recreation.*
- *All other existing water uses are protected.*
- *Excess water is banked and available for other future water uses.*



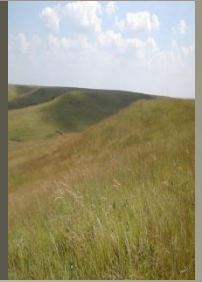
Funding

- NRD Property Tax Levy – up to 8.5 cents per \$100 as determined by the local board.
- NRD Occupation tax on irrigated land -- up to \$10/acre as determined by the local board.
- Limited bonding authority for water augmentation, stormwater programs and rural water systems.



Nebraska's

Natural Resources Districts



**Nebraska #1 in irrigation & groundwater
levels are at Pre-development levels -
Thanks to local NRD management!**

Questions ?

Dean E. Edson
Executive Director
Nebraska Association of Resources Districts
601 South 12th, Suite 201
Lincoln, NE 68508
402.471.7670
dedson@nrdnet.org

Visit www.nrdnet.org to learn more!