

Western States Water Council Summer 2021

Arizona's Anticipated Actions in Response to Expected Colorado River Shortage



Thomas Buschatzke

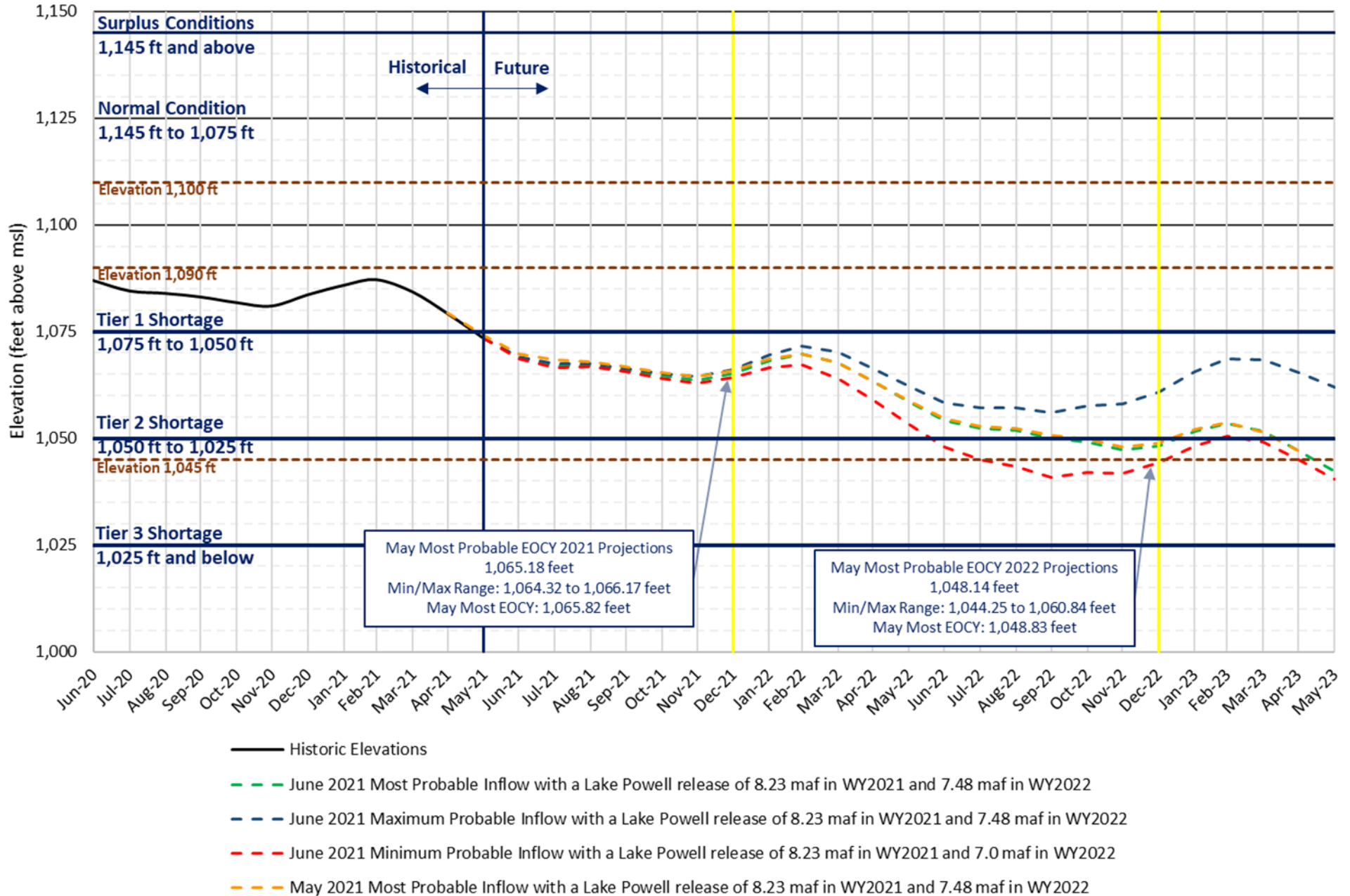
Director

Arizona Department of Water Resources

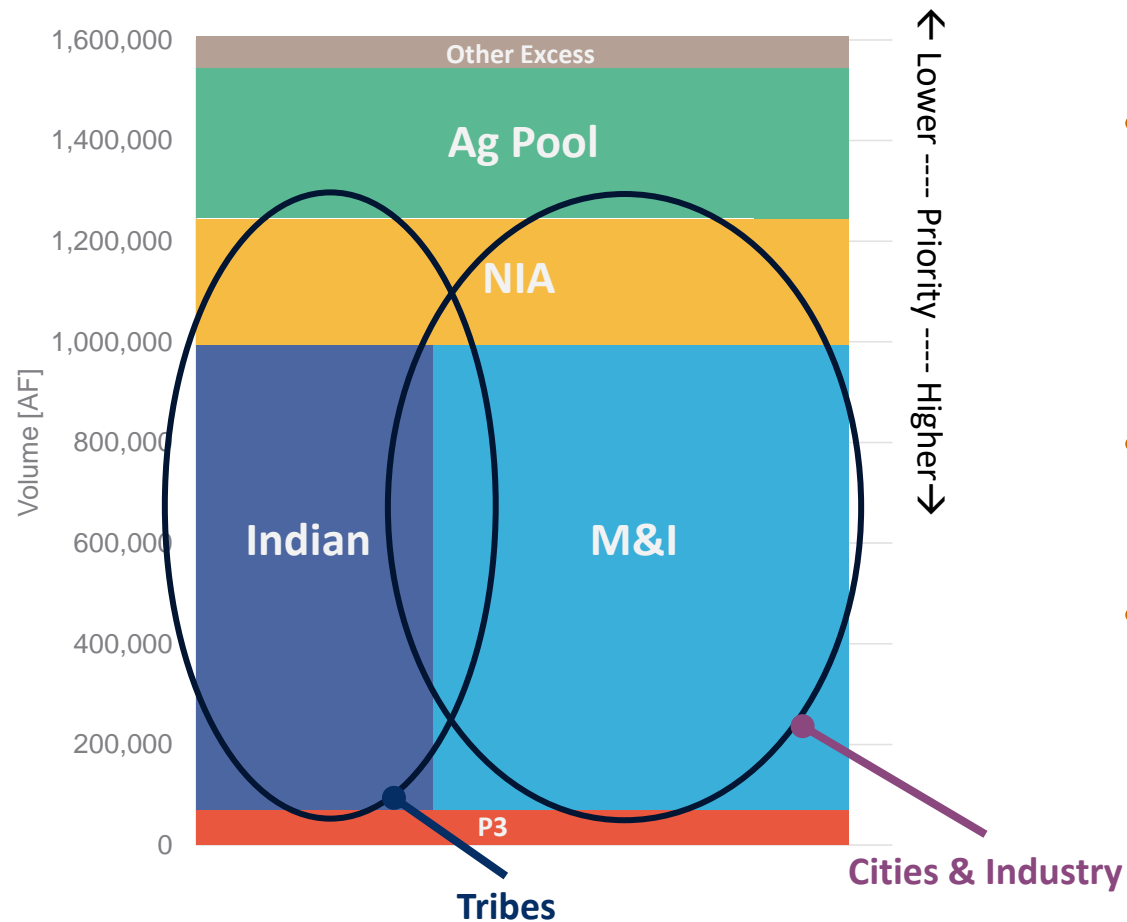
June 23, 2021

Lake Mead End of Month Elevations

Historic and Projected based on June and May 2021 24-Month Study Inflow Scenarios

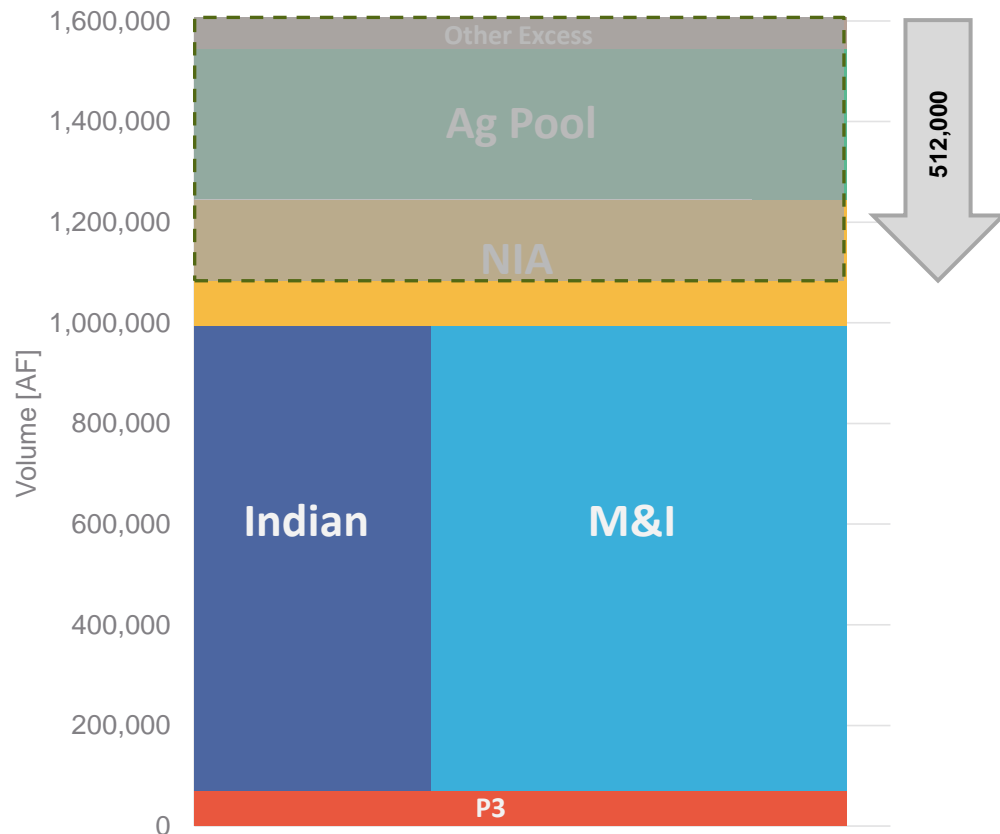


CAP Priorities – Full Supply



- “Block Chart” illustrates delivery requests by CAP priority.
 - Higher priority entitlements are towards the bottom of the chart.
- The names of the “pools” do not neatly align with uses.
- Assumptions for 2022:
 - 1.595 MAF delivery supply prior to reductions
 - Water orders similar to 2021.
 - Includes NIA Reallocation.

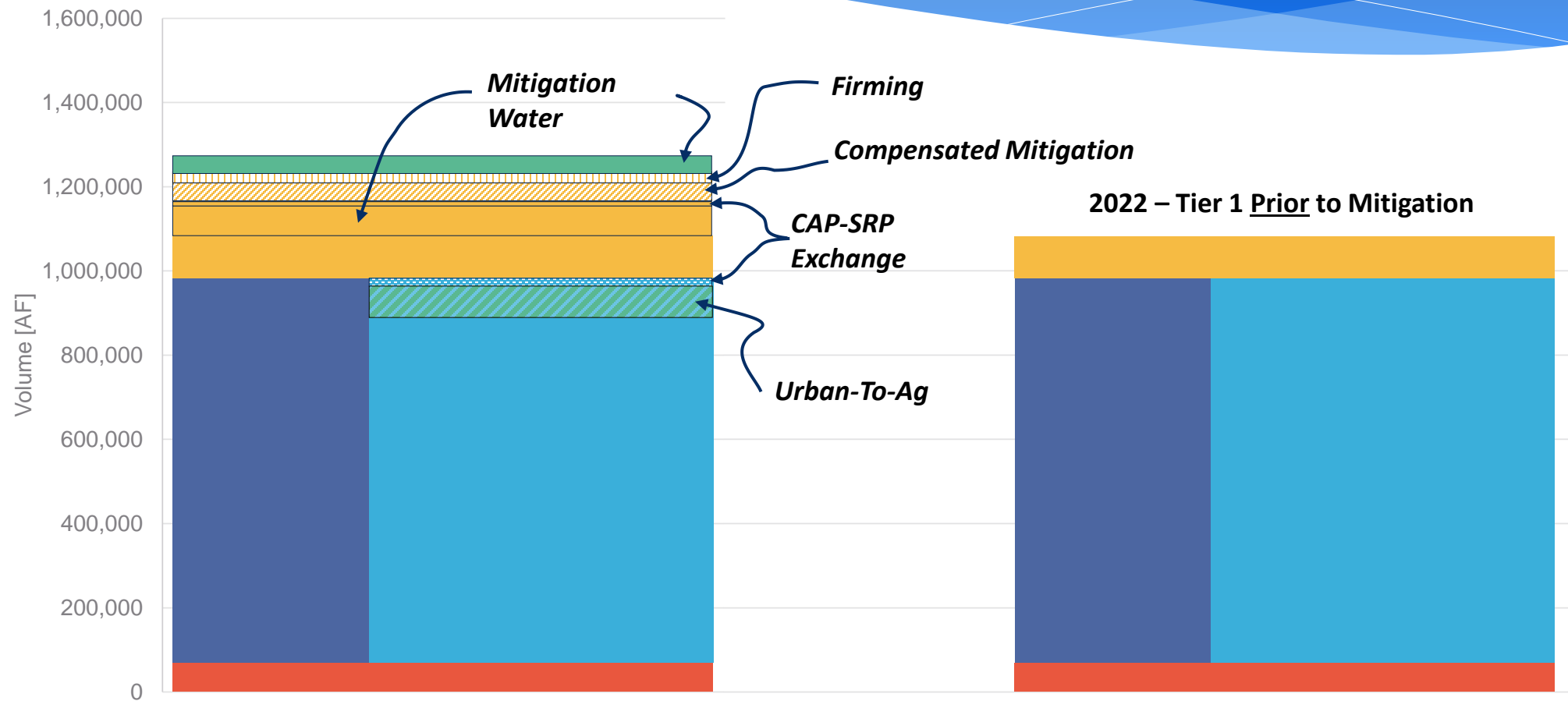
CAP Priorities – Tier 1 Shortage



- 512,000 AF* Reduction/Contribution
 - 320,000 AF per 2007 Guideline
 - 192,000 AF per LBDCP
- Pre-Mitigation Impacts
 - 100% Reduction to Ag Pool
 - ~60% Reduction to NIA Pool

* P5/6 reductions accounted for separately.

2022 – Tier 1 Shortage (CAP)



Mitigation Component - Key Terms

2020 – 2022

- 100% mitigation for NIA Pool (annual determination of vol.)
- Fixed volume for CAP AG, dependent on annual tier determination

2023 – 2025

- No CAP Ag Mitigation (except USF to GSF and groundwater infrastructure)
- M&I and Indian priority fully mitigated first
- NIA volume based on actual orders/operating conditions
- NIA 75% under T1 and T2a (until no supplies)
- NIA 50% under T2b (until no supplies)

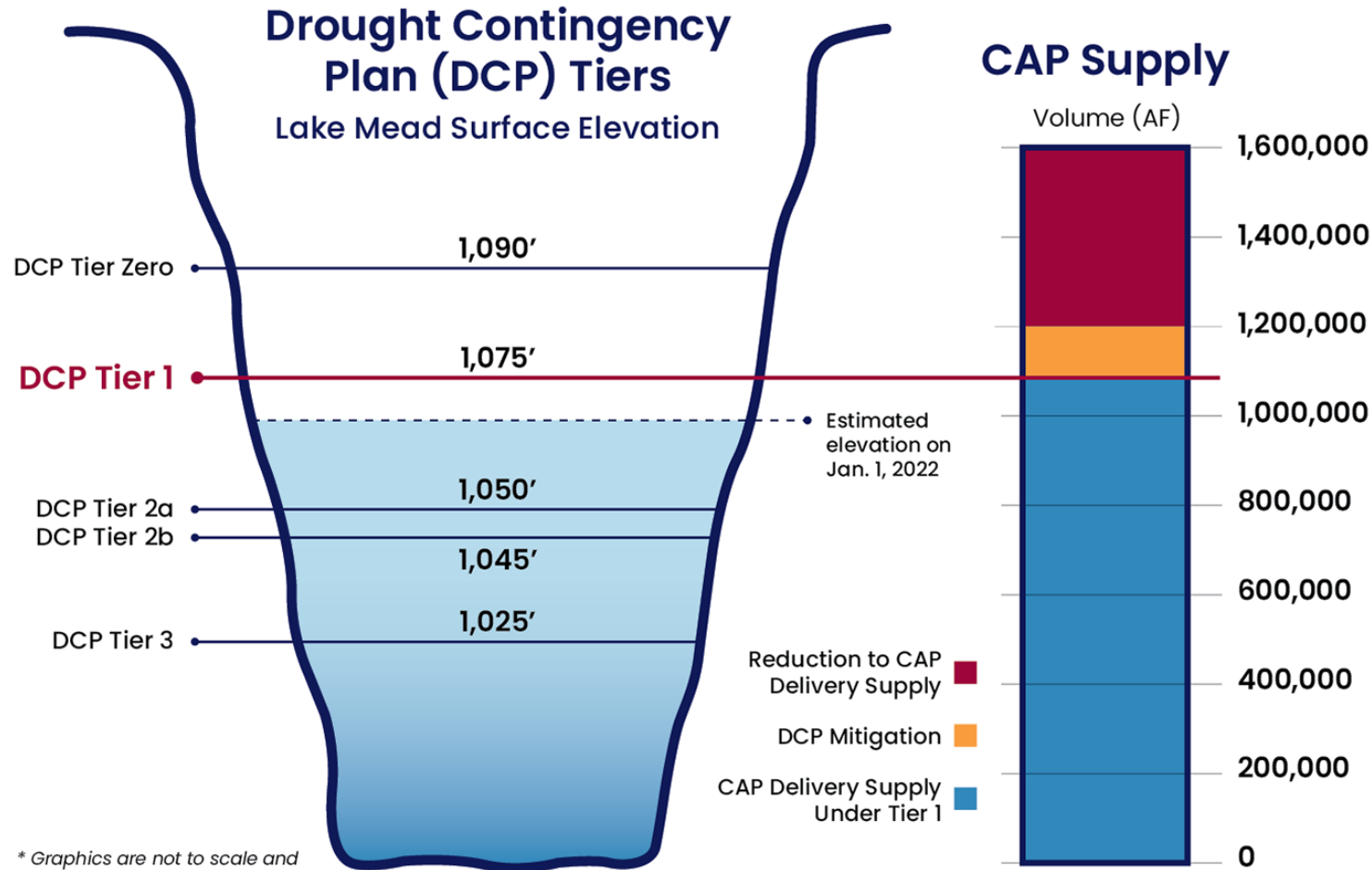
2026

- Zero mitigation
- **No mitigation for any water user in T3 or 2026, whichever occurs first**

2020/21 Arizona DCP Implementation

Arizona Lake Mead Contribution Volumes DCP Implementation & Related Actions		ICS	2019 (ac-ft)	2020 Tier 0 (ac-ft)	2021 Tier 0 (ac-ft)
Arizona LBDCP (Tier 0: 192k ac-ft)	Ag Forbearance 3 Program	EC-ICS	24,283	44,310	
	Ag Forbearance 3 Program	DCP-ICS			57,000
	CAWCD Compensated Conservation	EC-ICS		3,124	
	CAWCD Excess Water		119,942	133,174	146,392
	LBDCP Total		144,225	180,608	203,392
Additional CAWCD Conservation	CAWCD Compensated Conservation	EC-ICS			3,500
	CAWCD Total				206,892
Arizona DCP Mitigation Offset (400k ac-ft total)	GRIC - Reclamation	EC-ICS	100,000		
	GRIC - AWBA	EC-ICS	17,000	33,000	
	GRIC	EC-ICS		50,000	40,000
	CRIT System Conservation			50,000	50,000
	Total		117,000	133,000	90,000
Reclamation DCP	FMYN System Conservation			10,000	13,933
	MVIDD			6,137	6,925
	Total		0	16,137	20,858
Additional Arizona ICS Creation	CRIT	EC-ICS	6,274	3,736	4,685
	Total		6,274	3,736	4,685
Pilot System Conservation Program (PSCP)	Bullhead City		306	349	360
	CRIT		26,805		
	FMYN		13,683		
	Total		40,794	349	360
Total Arizona Lake Mead Contributions			308,293	333,830	322,795

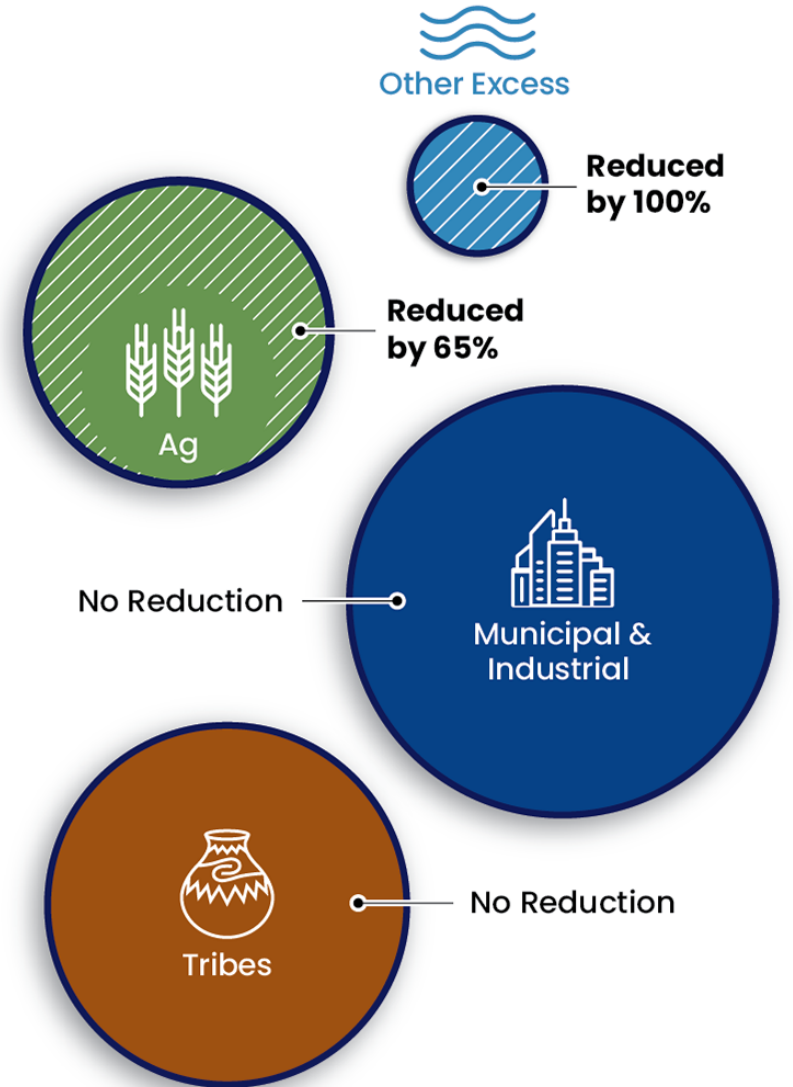
Tier 1 Shortage: CAP Reductions



* Graphics are not to scale and serve only as a representation.

To learn more, please visit: www.cap-az.com/colorado-river-shortage

2022 Reduction to CAP Users After DCP Mitigation



Questions?

Thomas Buschatzke
Director

Phone: 602-771-8412

Email: tbuschatzke@azwater.gov

Website: new.azwater.gov

Twitter: [@azwater](https://twitter.com/azwater)

