

The WSWC Water Data Exchange (WaDE) Program Update: Stan the State Engineer

WSWC Summer (196th) Meetings
June 23, 2021

Adel Abdallah, Program Manager
Tony Willardson, Executive Director
Ryan James, Data Analyst



WESTERN STATES
WATER COUNCIL

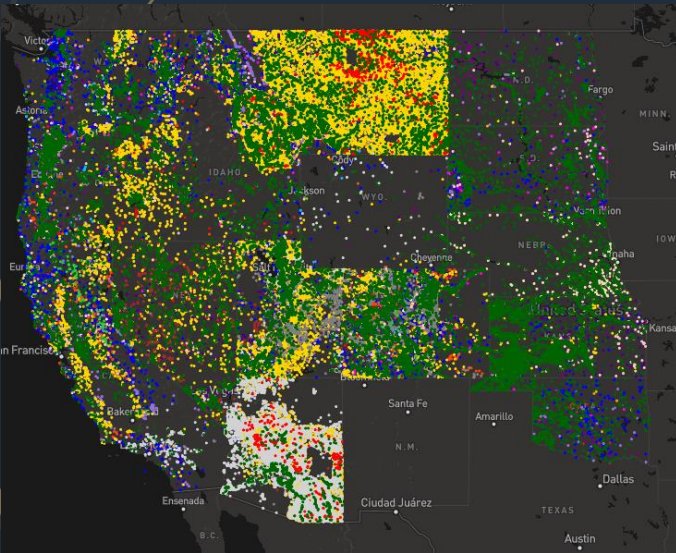
Water Data Shared by WaDE

2

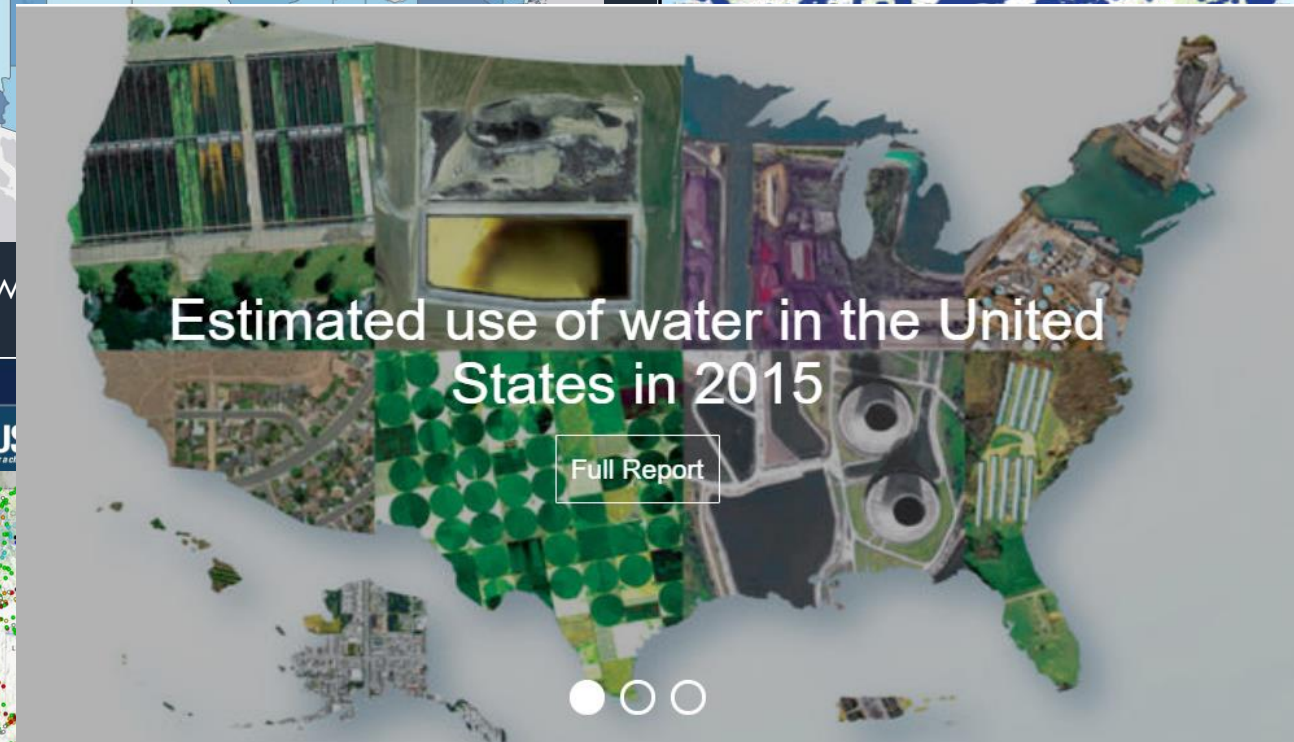
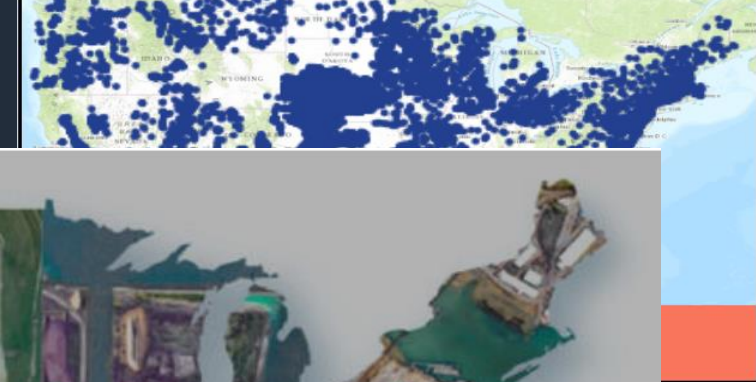
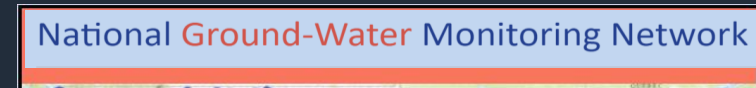
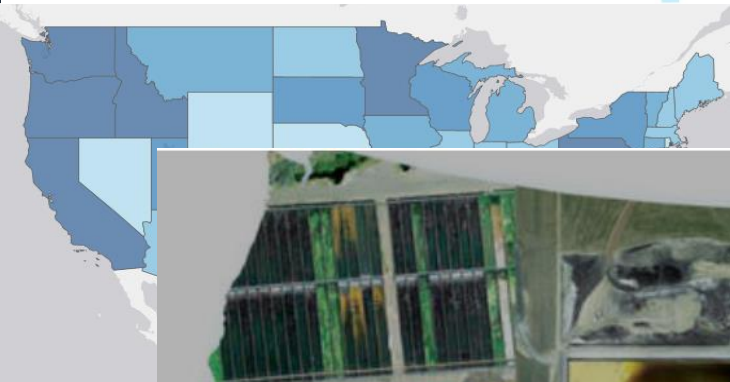
- ❑ Water rights
- ❑ Site-specific use and withdrawals
- ❑ Aggregated water budget estimates
- ❑ Regulatory overlays

Feature Types

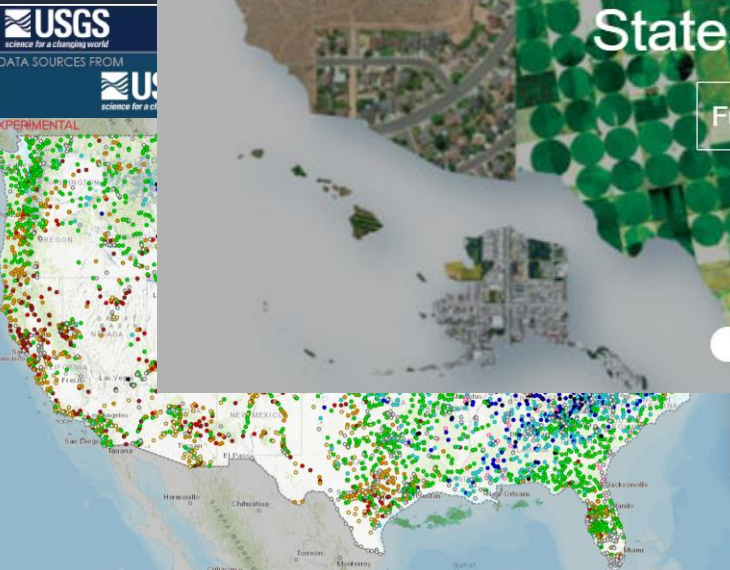
- Agricultural
- Aquaculture
- Commercial
- Domestic
- Environmental
- Fire
- Fish
- Flood Control
- Heating and Cooling
- Industrial
- Instream Flow
- Livestock
- Mining
- Municipal
- Other
- Power
- Recharge
- Recreation
- Snow Making
- Storage
- Unknown
- Wildlife



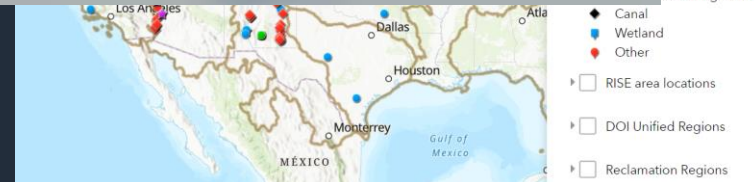
Water Data Shared by Federal Agencies



<https://w...>

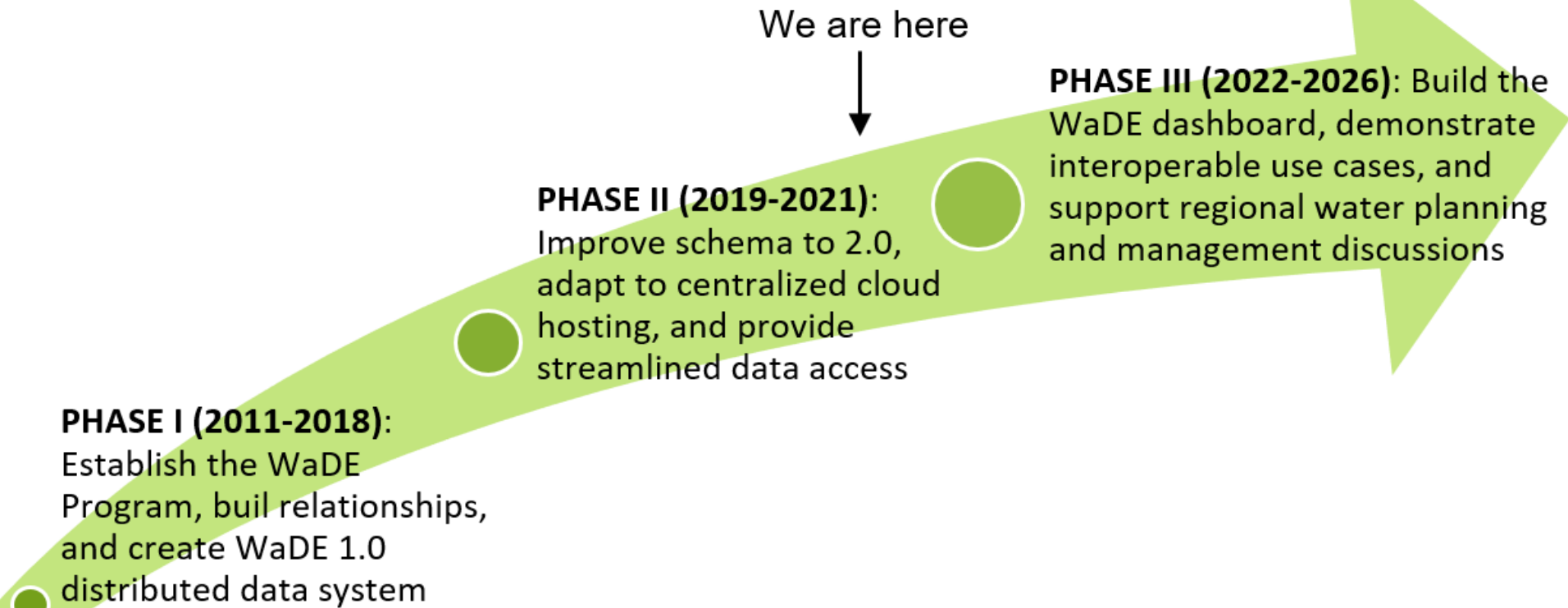


<https://dashboard.waterdata.usgs.gov>

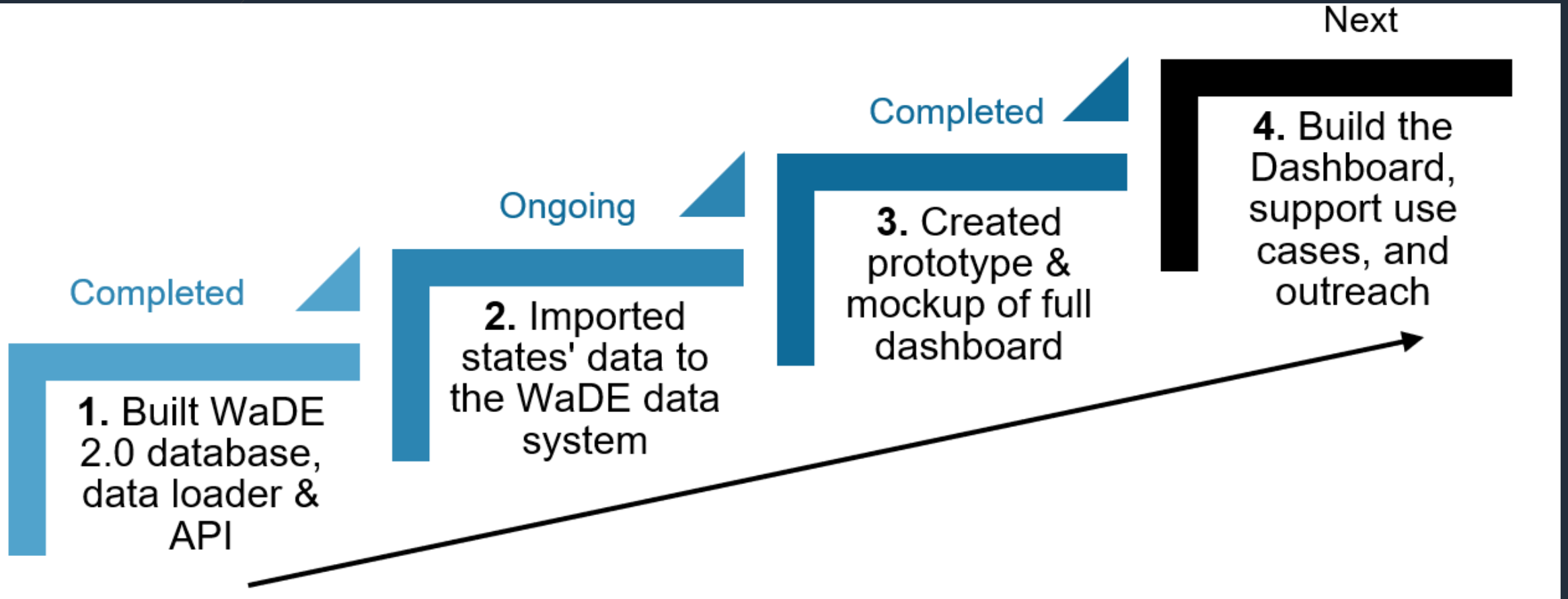


<https://data.usbr.gov/rise-map>

WaDE Phases

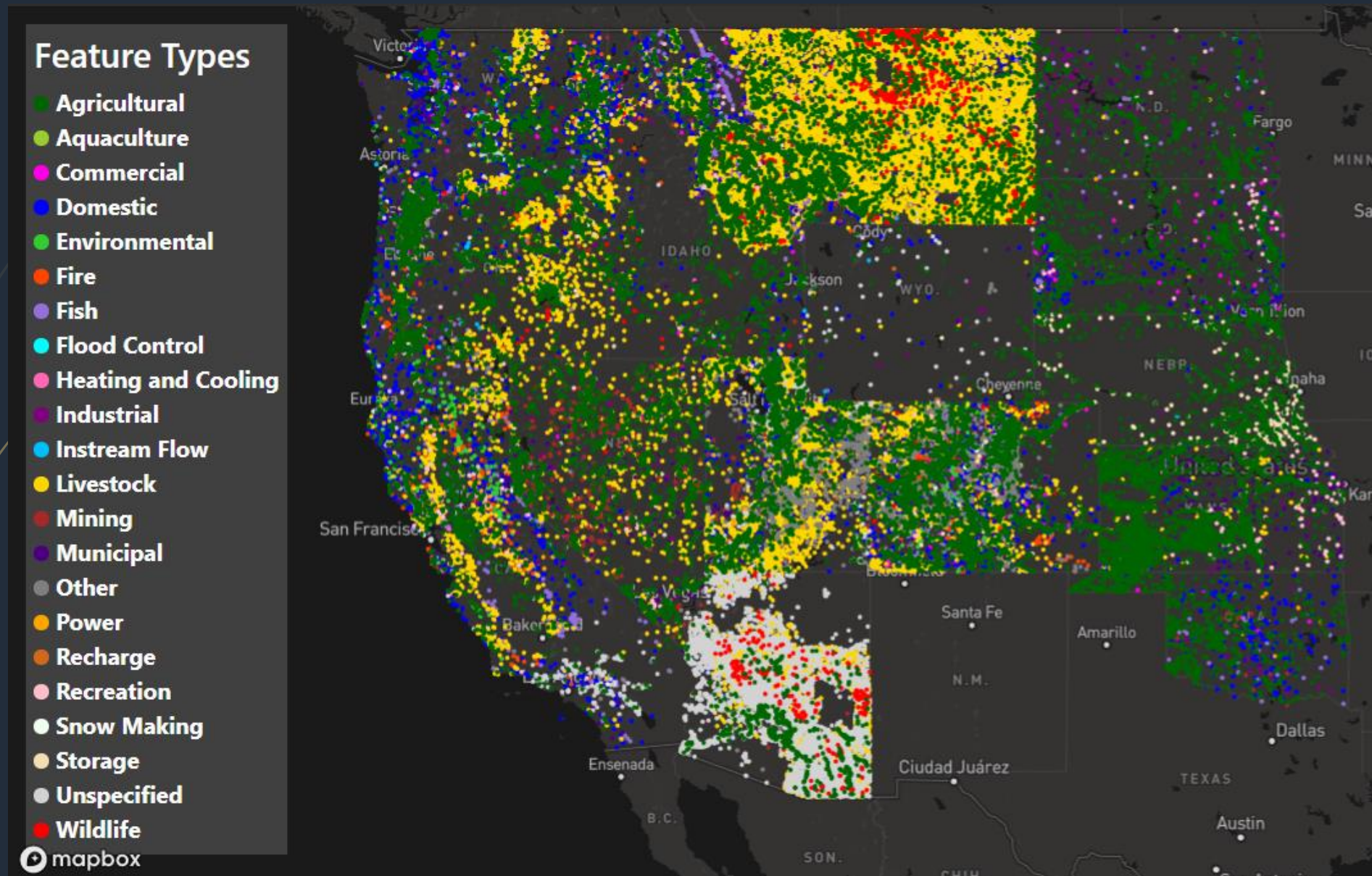


WaDE 2.0 Development Stages



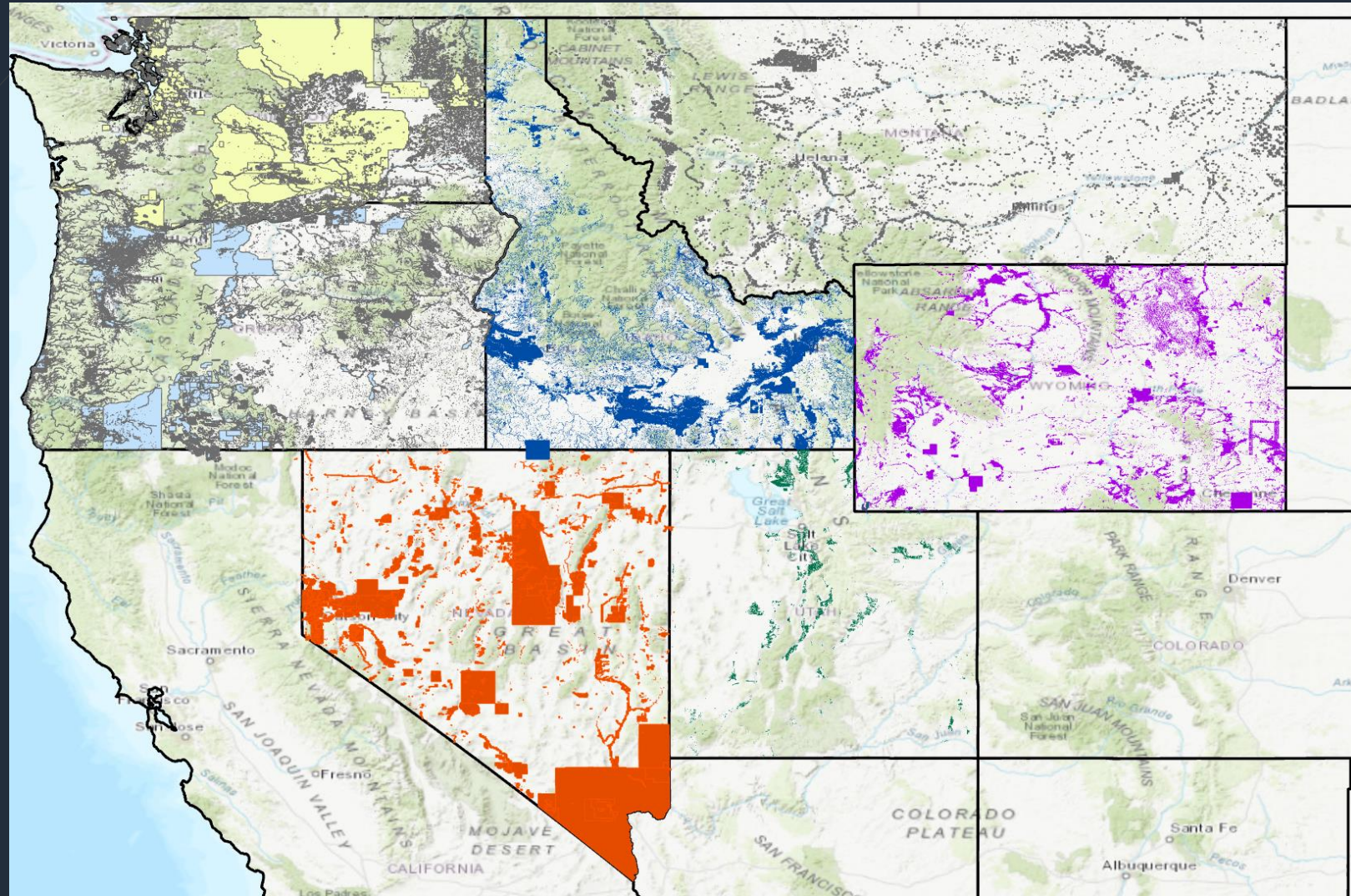
Status of Water Rights Data (PODs)

5



Status of Water Rights Data Mapping (POUs)

6



WaDE Funding

- Submitted a proposal to [the Bureau of Reclamation Applied Science Grants](#) seeking a \$200,000 for the development of the Western Water Data Access and Analysis Tool (WestDAAT) dashboard.
- Partnered on a proposal with the OpenET team to the [NASA Research Opportunities in Space and Earth Science \(ROSES\)](#) to integrate WestDAAT and OpenET.
- Submitted a Concept Note to the [Walton Foundation](#).
- Initial approval to extend the current [Moore Foundation](#) for another year with additional \$150,000.

WaDE Integration with OpenET

8

States water rights data, diversions and withdrawals, and regulatory overlays



Report Irrigated Ag. Use to USGS



Summarize Permitted Rights Vs Actual Use



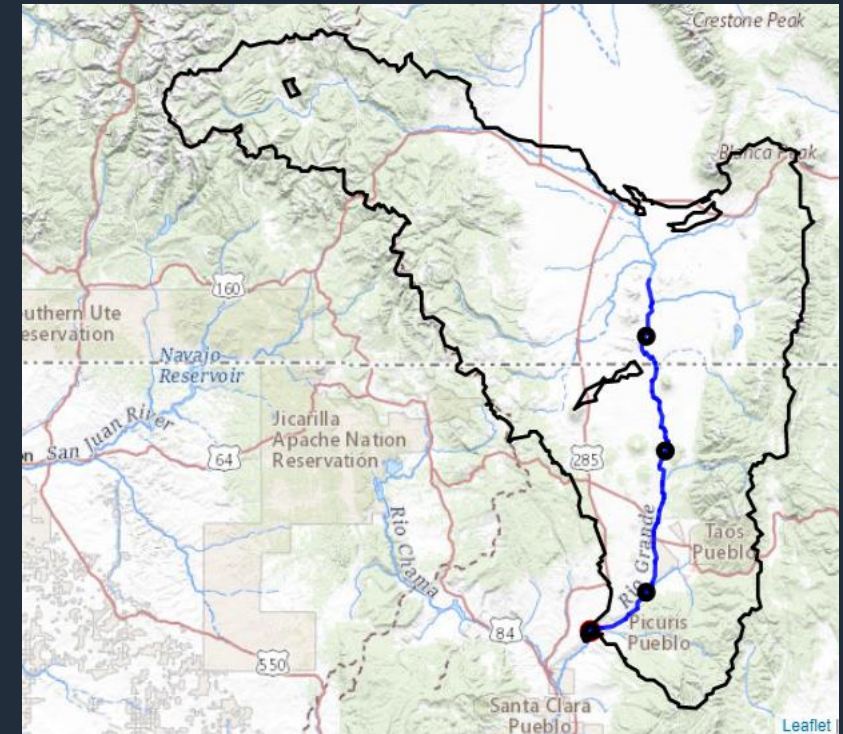
Generate Input to States' Water Budget Models

WaDE Use Cases and Personas

1. Gary the Governor
2. Stan the State Engineer
3. Maggie the River Basin Manager
4. Laila the Land Use Manager
5. Frank the Farmer/Canal Company
6. Ratibah the Researcher

Stan the State Engineer

- Identify **existing downstream water rights that might be impacted** by a new water rights application, or a change or transfer application
- Identify locations of upstream reservoirs, gage stations, and water rights to **evaluate the availability of water for the water right under consideration**
- Identify if an application falls within a **special or active management area** for his or other agencies that regulate the use of water for the water right under consideration
- Compare aggregate **permitted vs. actual water** use (“paper water” vs. “wet water”) as estimated by OpenET in a watershed



Next steps

- ▶ Hold focus groups meetings to Refine, Revise, and Improve the Designs of WestDAAT
- ▶ Share WaDE's 5-year workplan
- ▶ Third Colorado River Basin Workshop at CRWUA in December
- ▶ Continue **connecting** member states data into WaDE
- ▶ Support WaDE data interoperability with USGS and IOW **Geoconnex** U.S. Hydrologic Features
- ▶ Coordinate with **Reclamation** on their water rights database project
- ▶ **Beta release** WaDE 2.0 system to our partners and the public in 2022

Funders, Collaborators & Partners

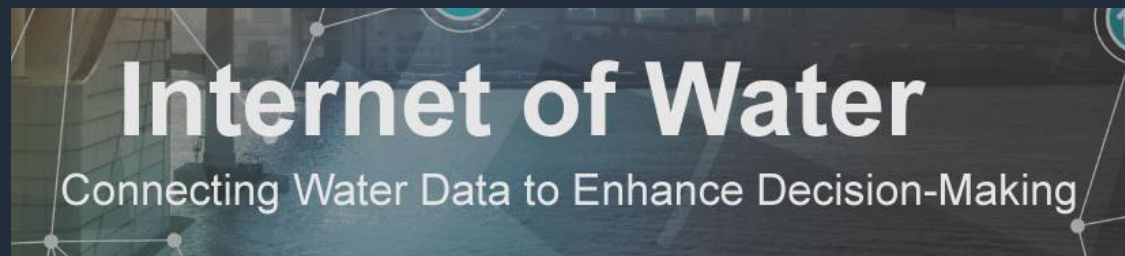
Water Foundation

Mitchell Foundation

MOORE Foundation

EPA Exchange Network Grant Program

Western States Water Agencies



Thank You!

Tony Willardson, Executive Director
Adel Abdallah, WaDE Program Manager
Ryan James, WaDE Data Analyst

<https://westernstateswater.org/wade>
adelabdallah@wswc.utah.gov

Questions?

