



Water Resources Stewardship in Yellowstone National Park

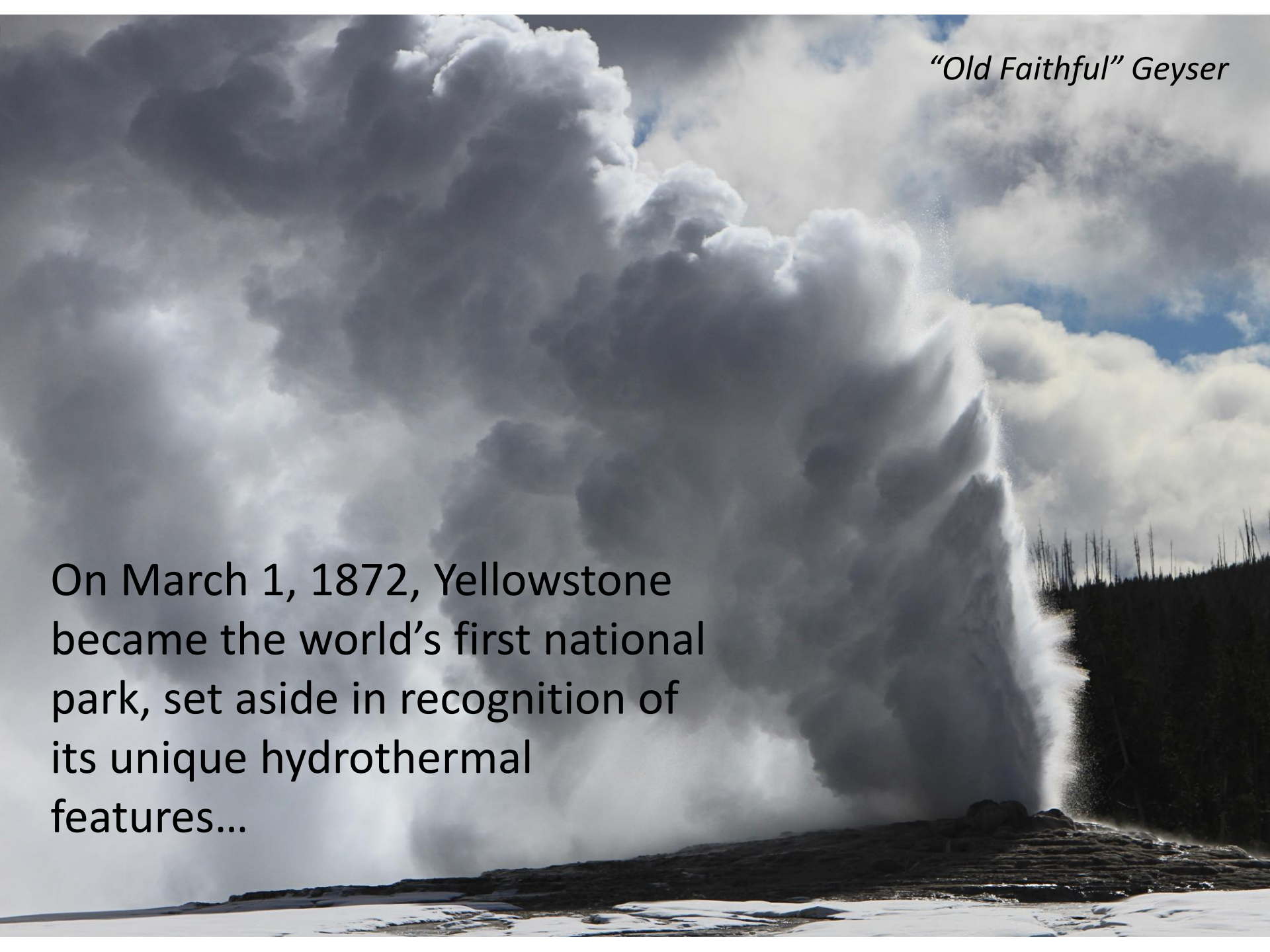
Erin White, Ph.D., P.E., Park Hydrologist

National Park Service
Yellowstone Center for Resources

EXPERIENCE YOUR AMERICA

“Old Faithful” Geyser

On March 1, 1872, Yellowstone became the world’s first national park, set aside in recognition of its unique hydrothermal features...



- 5 entrances; 4+ million visitors/year
- 50% inc. in Memorial Day weekend visitation in 2021 vs. 2019

Roosevelt Arch, North Entrance, built 1903



Yellowstone NP forms the core of the Greater Yellowstone Ecosystem and is a world leader in promoting large landscape conservation.

Pelican Creek

Mission

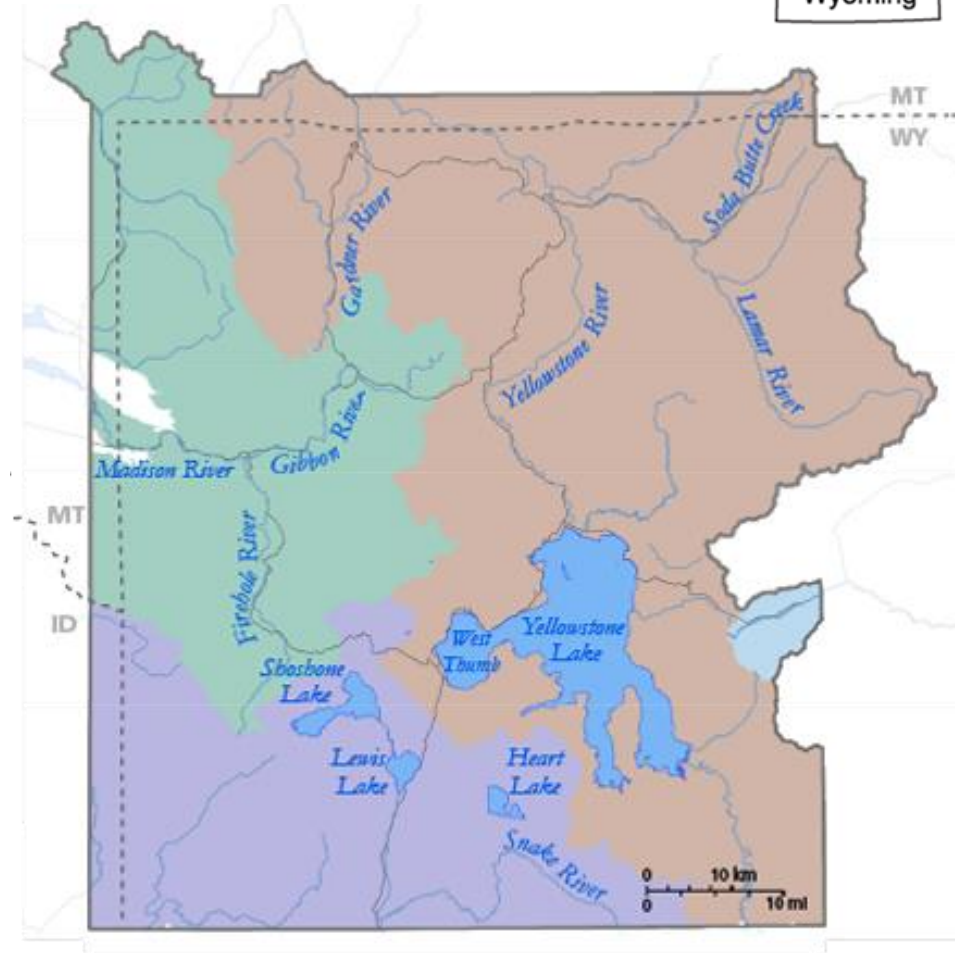


"... to conserve the scenery and the natural and historic objects and wildlife therein and to provide for the enjoyment of the same in such a manner and by such means as will leave them unimpaired for the enjoyment of future generations."
– NPS Organic Act of 1916

View from the headwaters...

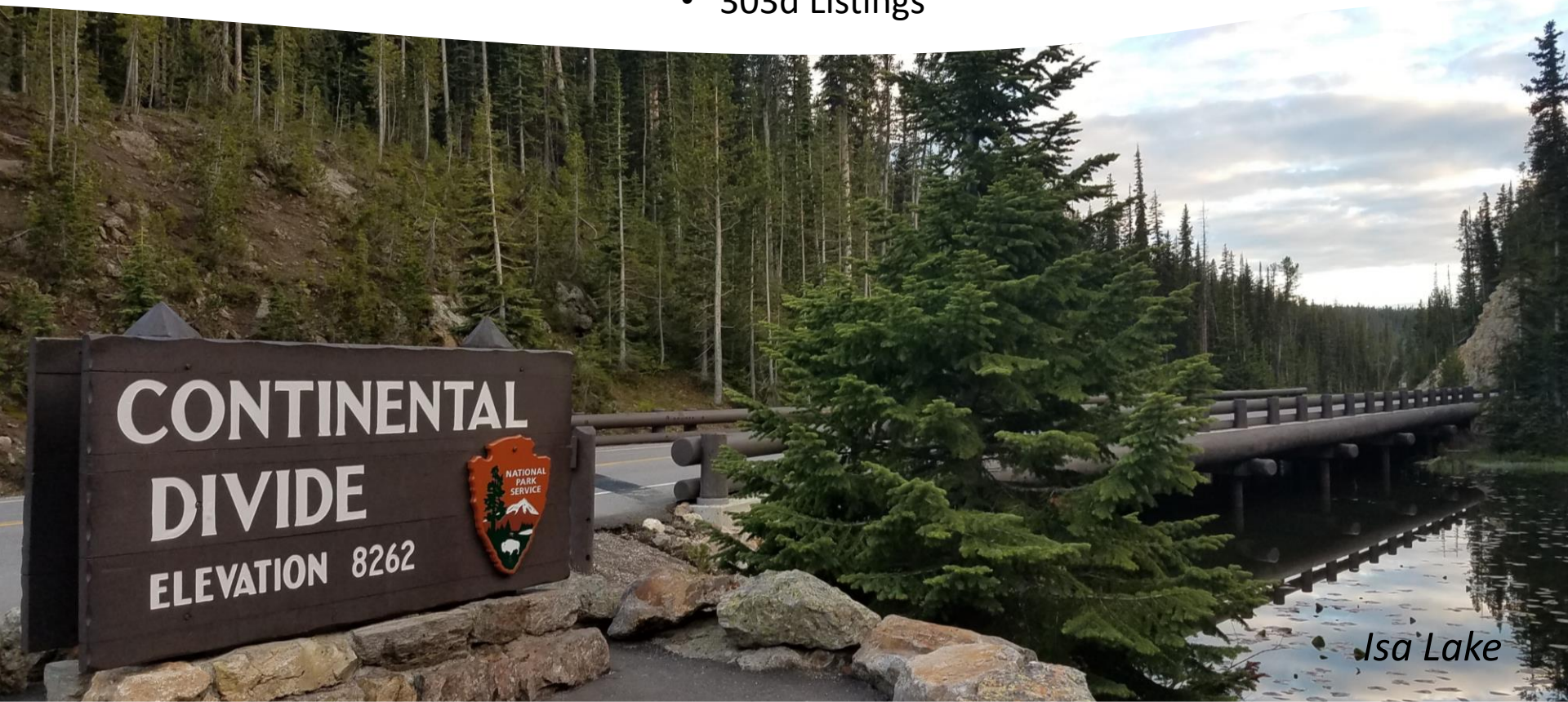


- 150 lakes, 278 streams, 45 waterfalls, and thousands of small wetland areas.
- 5.2 million automated streamflow measurements collected in 2020 with cooperation of USGS WY-MT Water Science Center



Water Resources Management

- **Infrastructure & Civil Works Projects**
 - Water Supply Planning
 - Federal Highways
- **Transboundary Issues**
 - Water Rights and Wild & Scenic Rivers Designation
 - Aquatic Invasive Species
 - Climate Change
- **Water Quality**
 - Spill Response & Clean-up
 - 303d Listings



Isa Lake

Water Supply

- The mis-classification of GWUDI sources as groundwater was determined to be a national issue based on the 6 Year Review of the Microbial Drinking Water regulations (EPA, 2016).
- Microscopic particulate analysis (MPA) alone may not be adequate to identify all sources that are GWUDI.
- EPA Region 8 study underway to determine the effectiveness of several potential indicator organisms that could be integrated (at the Region's discretion) into the regional GWUDI determination process as either supplements or replacements for MPAs.



Federal Highways

- 452 miles of roads intersect 2,500 miles of rivers and streams in park
- Focus Area: Improve Parkwide Transportation Infrastructure
 - ~ \$55 million in 3 road corridors over next 5 years
 - ~\$450 million in projects in planning
- Project Highlights
 - Pelican Creek Bridge (Success Story)
 - Lost Creek Restoration (Planning)



Water Rights

- Three active diversions within Yellowstone National Park.
- The Snake River was designated a Wild and Scenic River under the 2008 Craig Thomas Snake Headwaters Legacy Act.
- In collaboration with Grand Teton National Park, U.S. Forest Service, and the U.S. Geological Survey, Yellowstone staff collected critical flow data for the Snake River within Yellowstone and Grand Teton National Parks last year.



Water Quality

- Class I Outstanding Waters designation.
- Motor vehicle accident spilled over 3,000 gallons of fuel 100 ft from Yellowstone River with active response engagement by NPS, Wyoming DEQ, and U.S. EPA.
- In 2018, the State of Montana removed Soda Butte Creek from the 303(d) list of impaired waterways due to water quality improvements. This marks the first delisting of an impaired waterway in the State of Montana following any mine waste remediation effort.



Exhibition: What Lies Beneath: Exploring Yellowstone Lake's Mysterious Vents

Draper Natural
History Museum's
John Bunker Sands
Photography Gallery

April 24 – August 8,
2021, and again from
October 2, 2021 –
May 1, 2022.

**BUFFALO BILL
CENTER
OF THE WEST**



Thank you

Contact: Erin White, Ph.D, P.E.
Yellowstone Center for Resources
P.O. Box 168
Yellowstone NP, WY 82190
(307) 344-2717
erin_white@nps.gov

EXPERIENCE YOUR AMERICA