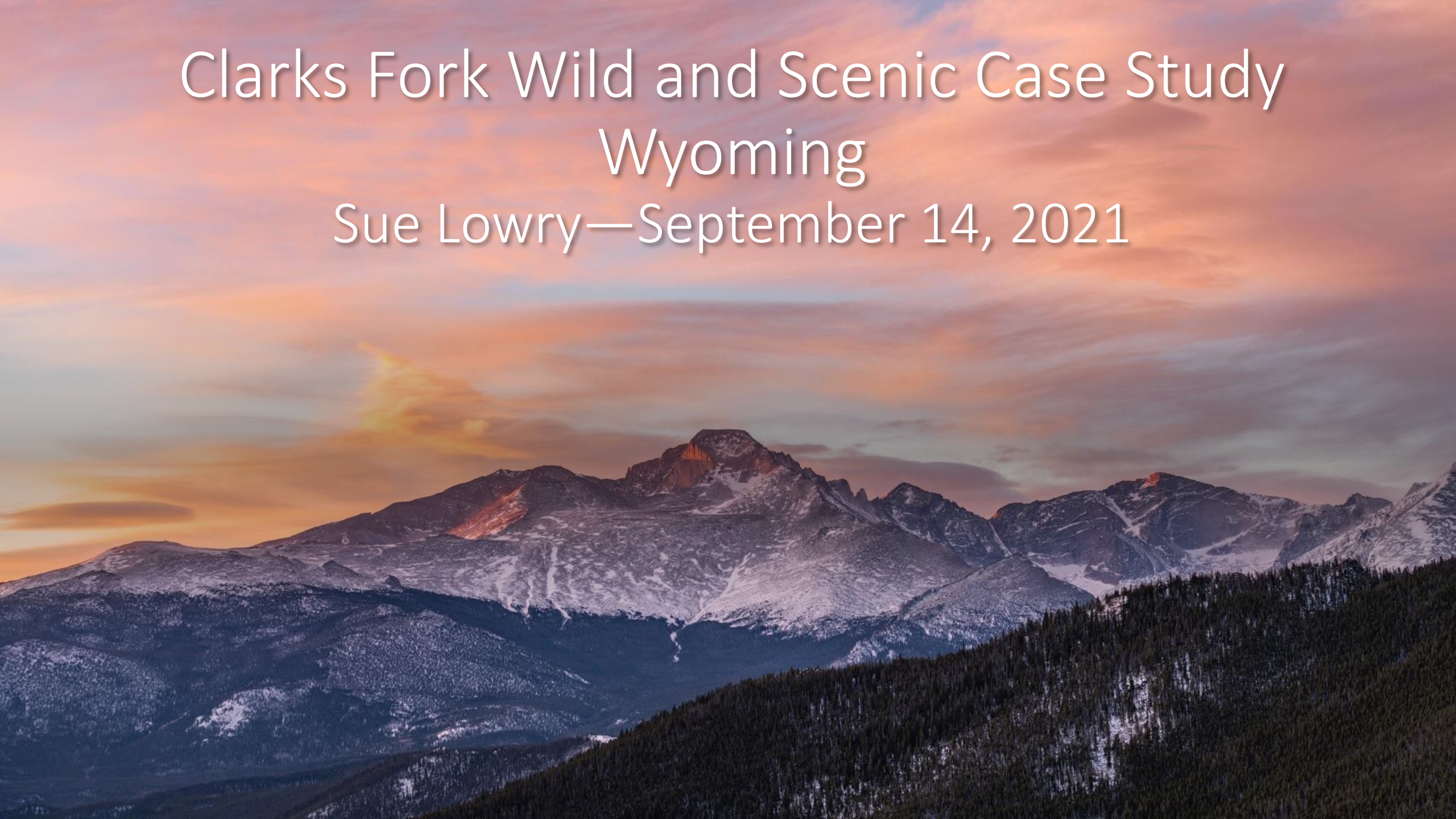
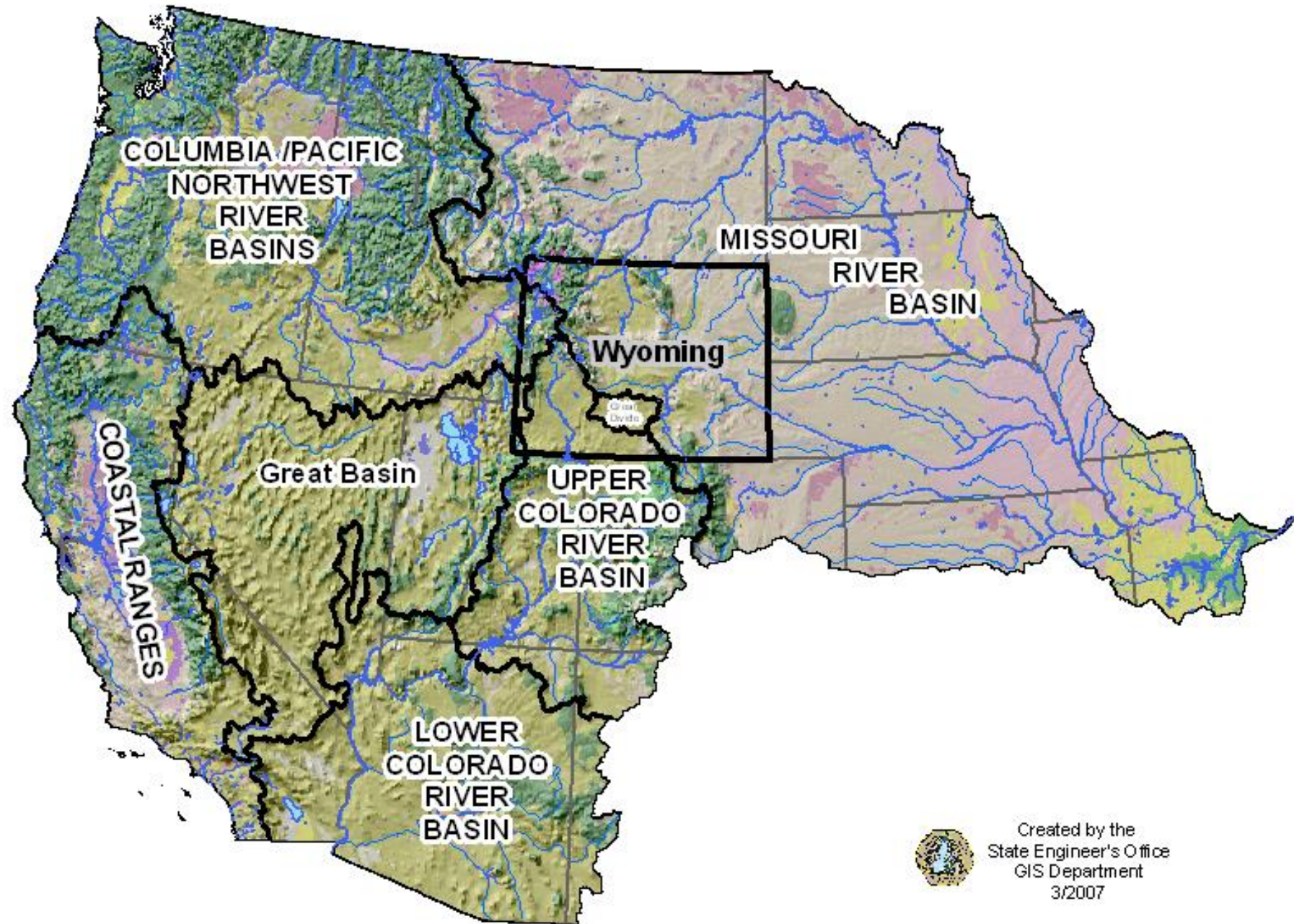


Clarks Fork Wild and Scenic Case Study

Wyoming

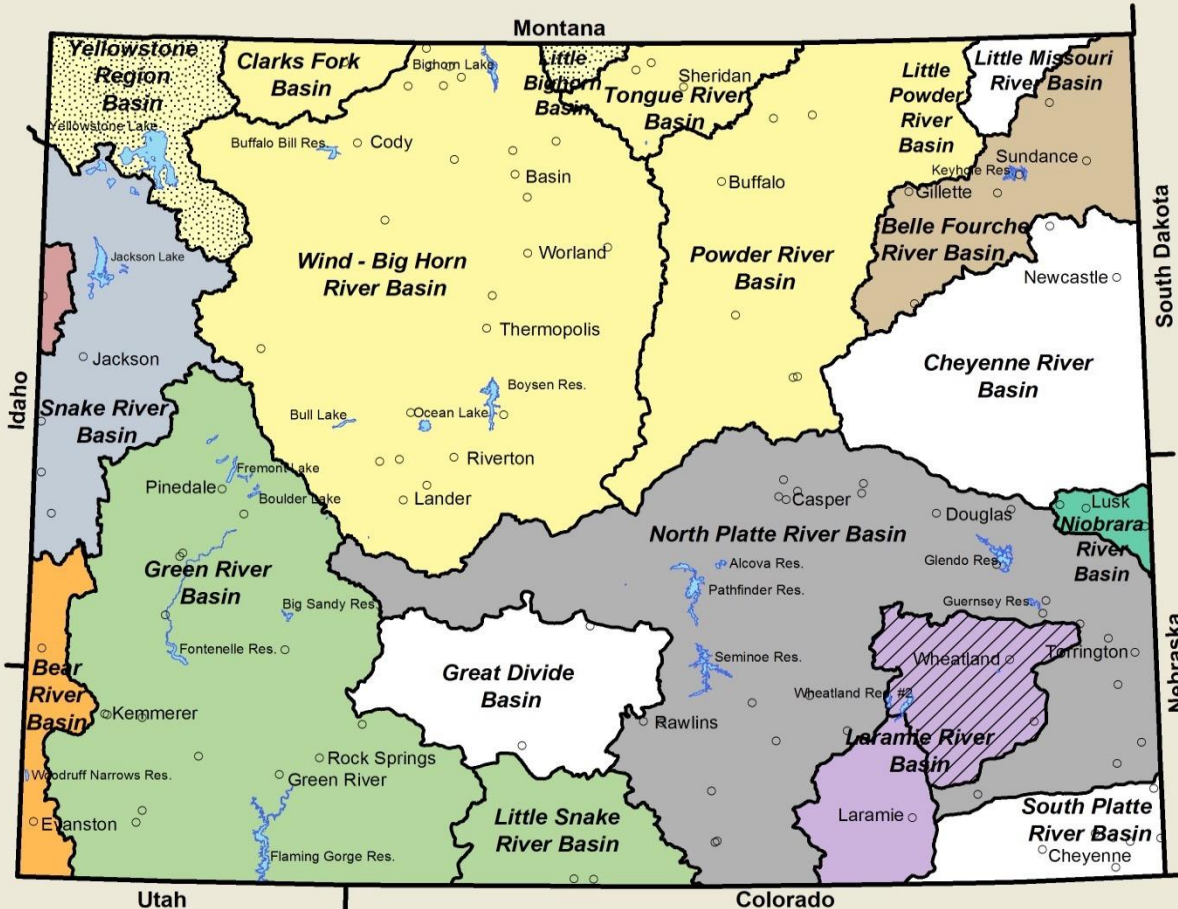
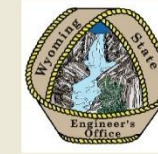
Sue Lowry—September 14, 2021





Created by the
State Engineer's Office
GIS Department
3/2007

Wyoming River Basin Compacts and Decrees

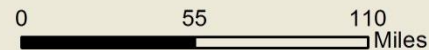


Legend

- Cities
- Major Streams
- Lakes/Reservoirs

Compacts and Decrees

- Amended Bear River Compact, 1978
- Colorado River Compact, 1922
- Upper Colorado River Compact, 1948
- Snake River Compact, 1949
- Yellowstone River Compact, 1950
- Exceptions within the Yellowstone River Compact Area
- Belle Fourche River Compact, 1943
- Upper Niobrara River Compact, 1962
- North Platte River Decree, 1945 (modified 2001)
- Laramie River Decree, 1922
- Roxana Decree, 1941
- No compacts or Decrees
- modified North Platte Decree, 2001



February 2006
Wyoming State Engineer's Office

Wild & Scenic Right #1 issued under Wyoming Permitting system

-Priority Date of November 28, 1990; date of the Congressional designation of the segment

-20.5 mile long segment; ends at the USFS boundary

-Flow amounts based on modification of Leopold equation:

$$ISF = Q1 + \{ (Qs - Q1) \times [(Qs - Qa) / (Qb - Qa)]^{0.1} \}$$

Where:

| | | |
|-----|---|--------------------------------|
| ISF | = | instream flow |
| Q1 | = | minimum flow (200 cfs) |
| Qs | = | actual flow |
| Qa | = | Average annual flow. (845 cfs) |
| Qb | = | bank full flow (6138 cfs) |

-% of flow available for other purposes between 200 cfs & 6138 cfs

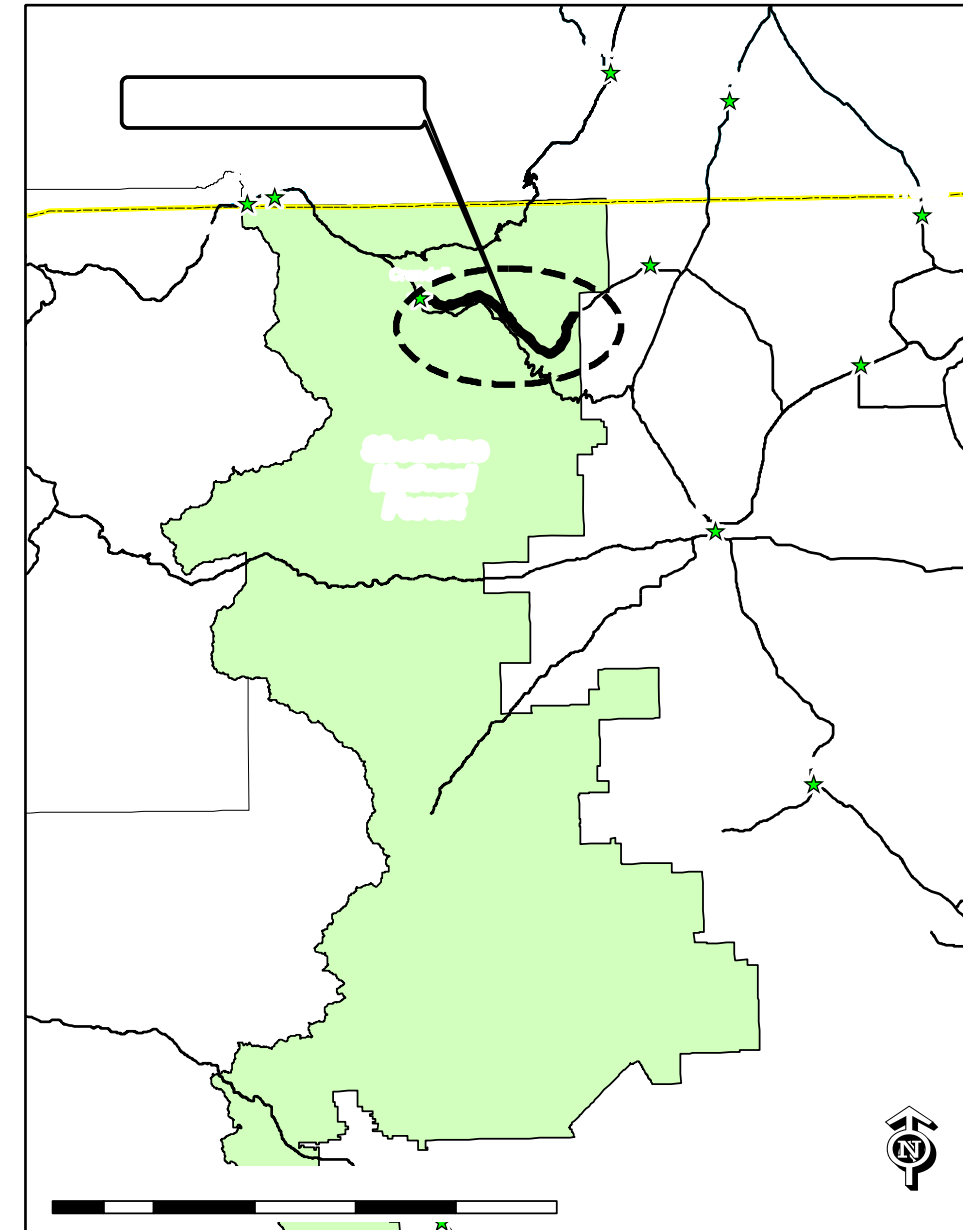


Figure 1. Vicinity map for Clarks Fork of the Yellowstone Wild River

CLARKS FORK WILD AND SCENIC SEGMENT FLOWS

