

Brief Overview of Indiana's SWWF Registration and Water Use Reporting Program

Mark Basch & Allison Mann

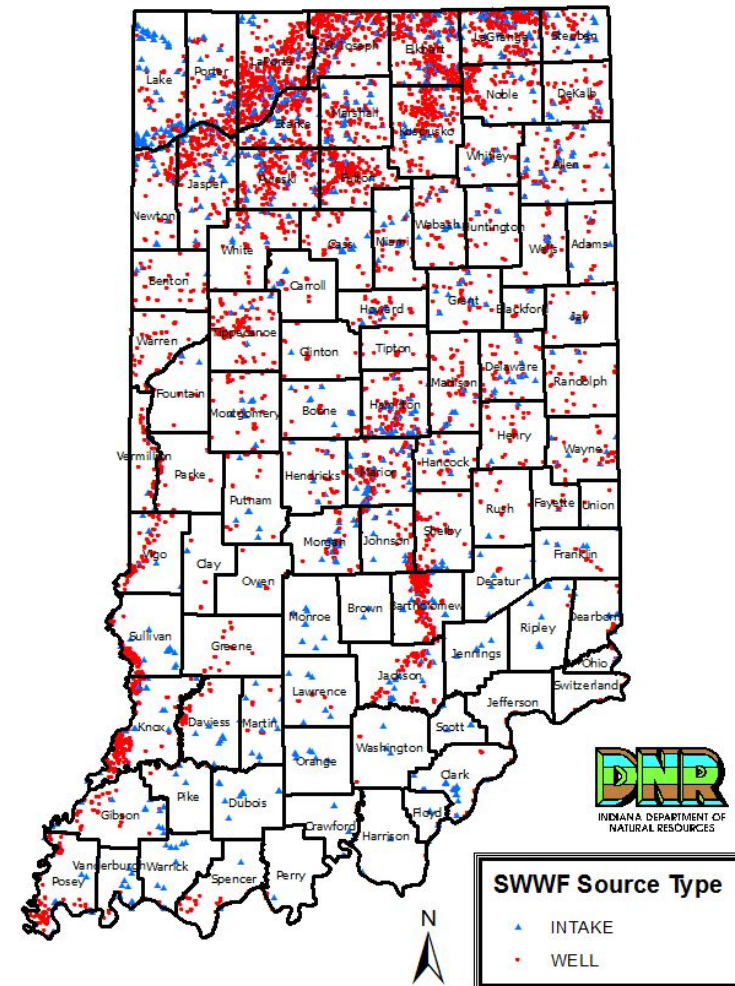
DNR, Division of Water

Water Rights & Use Section

Indiana Code 14-25-7: Water Resources Management

- Enacted in 1983
- Requires registration of all SWWFs (GW & SW)
- Facility defined as greater than 100,000 GPD capability
- Capability is aggregate of all wells & intakes
- Annual water use reporting required since 1985
- Approximately 4270 SWWFs currently registered

Significant Water Withdrawal Facility
Source Locations in Indiana



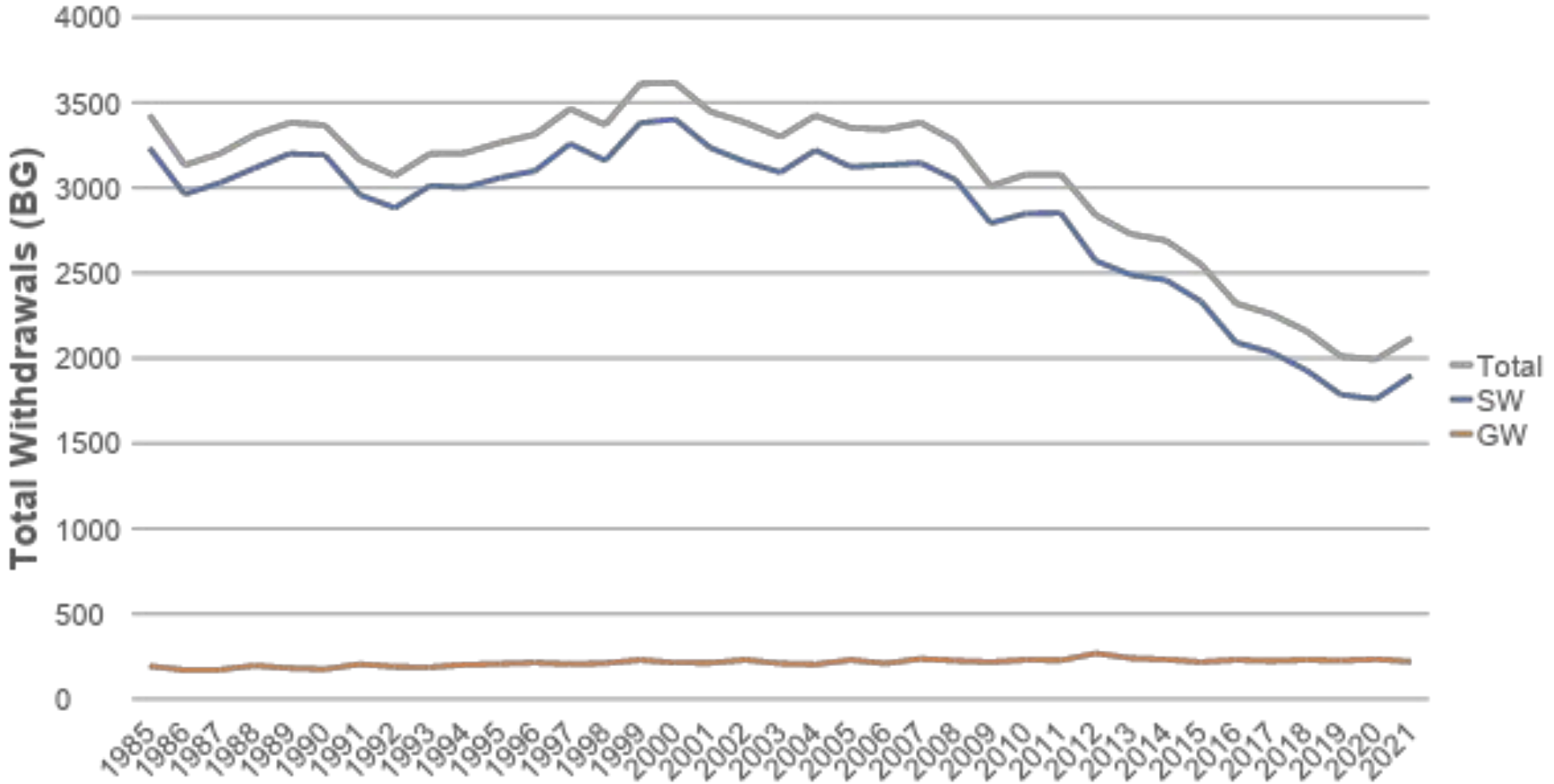
2021 Indiana Registered SWWFs

Water Use Code	Number of Facilities	Number of Wells	Number of Intakes
EP	88	248	82
IN	381	685	284
IR	2880	3943	797
MI	136	218	49
PS	724	2210	60
RU	61	154	12
TOTAL	4270	7458	1284

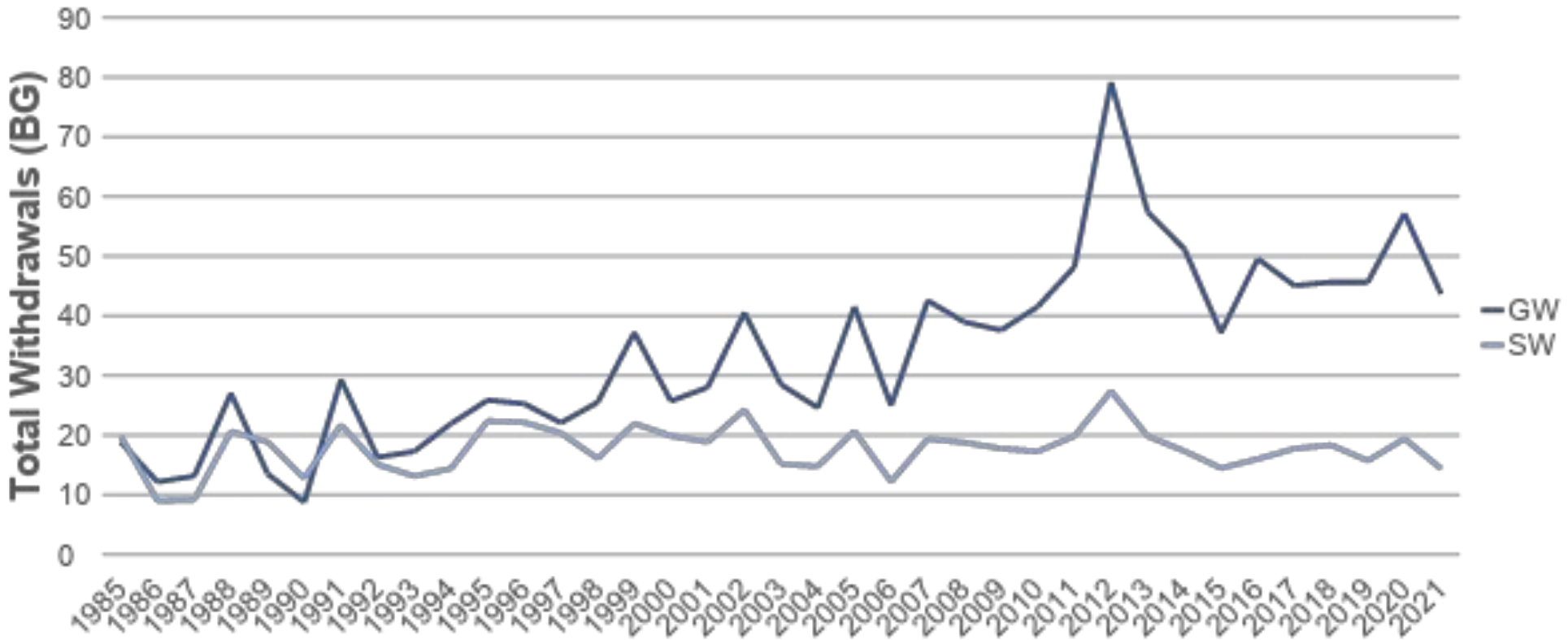
2021 State Totals

	Withdrawals (BG)	Capacity (MGD)	Withdrawals vs Capacity	Current Number
Surface Intakes	1898	16089	32.3%	1284
Wells	219	6195	9.7%	7458
TOTAL	2117	22284	26%	8742
Facilities				4270

Total Annual Withdrawals 1985-2021



Irrigation Ground and Surface Water Withdrawals 1985-2021



New SWWF Location Map



SWWF Information

	A	B	C	D	E	F	G	H	I	J	K
4	4-00450	PS	Town of Fowler	26-Sep-84	Fowler	25N	8W	10	WELL	10	
5	4-00450	PS	Town of Fowler	26-Sep-84	Fowler	25N	8W	10	WELL	9	
6	4-00748	PS	Benton Community Schools	31-Oct-84	Templeton	25N	7W	32	WELL	3	
7	4-00748	PS	Benton Community Schools	31-Oct-84	Templeton	25N	7W	32	WELL	2	
8	4-00748	PS	Benton Community Schools	31-Oct-84	Templeton	25N	7W	32	WELL	3	
9	4-00748	PS	Benton Community Schools	31-Oct-84	Templeton	25N	7W	32	WELL	4	
10	4-02278	PS	Town of Ansbria	16-May-85	Ansbria, IL-IN	24N	10W	35	WELL	1	
11	4-02278	PS	Town of Ansbria	16-May-85	Ansbria, IL-IN	24N	10W	35	WELL	2	
12	4-02297	PS	Town of Boswell	08-May-85	Boswell	24N	9W	13	WELL	1	
13	4-02297	PS	Town of Boswell	08-May-85	Boswell	24N	9W	13	WELL	2	
14	4-02516	PS	Earl Park Municipal Water Utility	02-Jan-86	Earl Park	28N	9W	23	WELL	1	
15	4-02638	PS	Town of Otterbein	07-Aug-86	Otterbein	24N	8W	33	WELL	3	
16	4-02638	PS	Town of Otterbein	07-Aug-86	Otterbein	24N	8W	33	WELL	4	
17	4-02672	IN	Trunkline Gas Company LLC	27-Aug-86	Stockland, IL-IN	24N	10W	14	WELL	1	
18	4-02672	IN	Trunkline Gas Company LLC	27-Aug-86	Stockland, IL-IN	24N	10W	14	WELL	2	
19	4-03045	IR	Sutter Jr., Bob	12-Feb-92	Earl Park	28N	9W	32	WELL	1	
20	4-03045	IR	Sutter Jr., Bob	12-Feb-92	Earl Park	28N	9W	32	WELL	2	
21	4-03045	IR	Sutter Jr., Bob	12-Feb-92	Earl Park	28N	9W	32	INTAKE	1	
22	4-04111	IR	Sutter Jr., Bob	25-Jan-96	Earl Park	28N	10W	26	INTAKE	1	
23	4-04802	RJ	Seven Hills Dairy	28-Jun-05	Mount Gilboa	38N	7W	8	WELL	1	
24	4-04802	RJ	Seven Hills Dairy	28-Jun-05	Mount Gilboa	38N	7W	8	WELL	2	
25	4-05090	IR	Stephen, Dennis	03-Aug-12	Stockland, IL-IN	24N	10W	13	WELL	1	
26	4-05090	IR	Stephen, Dennis	03-Aug-12	Stockland, IL-IN	24N	10W	13	WELL	2	
27	4-05091	IR	Stephen, Dennis	03-Aug-12	Templeton	24N	7W	2	WELL	1	
28	4-05091	IR	Stephen, Dennis	03-Aug-12	Templeton	24N	7W	2	WELL	2	
29	4-05091	IR	Stephen, Dennis	03-Aug-12	Templeton	24N	7W	2	WELL	3	

Online Submittal of Annual Water Use Data Now Available!

Annual Water Use Report Form Facility Registration Number: 00000000

Water Withdrawal
Units Used in Reporting Amounts Withdrawn: Millions

Monthly Report for Surface Water Sources

Surface Water Source: 1 Record Found

Apply 1st Surface Water Entry to All Intakes

January: February: March: April:
May: June: July: August:
September: October: November: December:

Intake ID	JAN	FEB	MAR	APR	MAY	JUN	JUL	AUG	SEP	OCT	NOV	DEC	Total
1	0.024	0.013	0.007	0.011	0.005	0.019	0.022	0	0.063	0.043	0.039	0.004	0.25

IC 14-25-7-18: Indiana Finance Authority (IFA) “Quality Assurance Review”

- Review of all SWWF data by Indiana Geological and Water Survey (IGWS) personnel;
- Evaluation of current SWWF well/ intake locations by IGWS;
- Identification of unregistered SWWFs by IGWS;
- Data reviewed in a manner to protect confidentiality of SWWF owners;
- Results of Q & A review submitted to DNR, Division of Water;
- Work financed by IFA

DNR Follow-up with IGWS Unregistered Potential SWWF Sites

- IGWS identified ~4600 sites
- DNR evaluated sites and determined ~3500 qualify for field inspection
- Majority of sites are center pivot irrigation systems
- **Follow up work by DNR financed with \$40K USGS WUDR Grant**
- DNR staff determined follow-up with sites would begin in Great Lakes Basin

DNR Follow-up with IGWS Unregistered Potential SWWF Sites

- Since February, 2019, DNR staff have investigated ~500 sites
- Advantage of conducting investigations in Spring/ early Summer- crops still down, not obstructing view
- If after inspection, site is believed to be SWWF, information and registration form provided to owner of site
- Approximately 70 registrations for new SWWFs have been submitted as a result of investigations

DNR, Division of Water Water Rights & Use Section

Mark Basch

mbasch@dnr.in.gov

Allison Mann

almann@dnr.in.gov