



PLAN | CONSERVE | DEVELOP | PROTECT
Utah's Water Resources

8/17/2022

National Water Use Data Workshop

Utah's Open Water Data



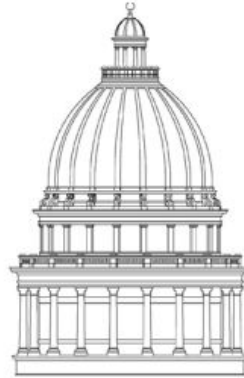
Aaron Austin | GIS Manager
Division of Water Resources

Utah's Open Water Data Website



REPORT TO THE
UTAH LEGISLATURE

Number 2015-01



**A Performance Audit of
Projections of Utah's Water Needs**

May 2015

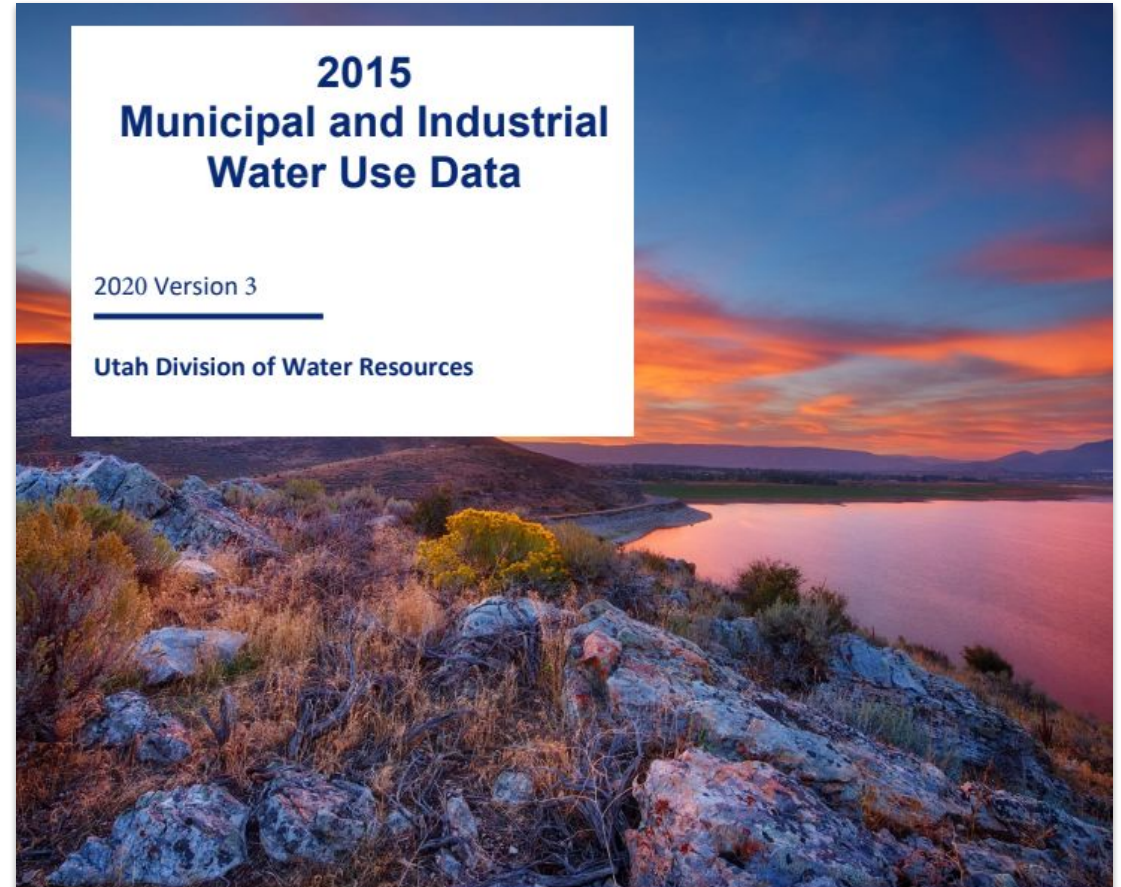
Office of the
LEGISLATIVE AUDITOR GENERAL
State of Utah



**2015
Municipal and Industrial
Water Use Data**

2020 Version 3

Utah Division of Water Resources





Submits
Water Use

Solicits
Feedback



Data
Validation

Flags
Potential
Errors





Utah Division of Water Rights



Utah Divisions of Water Rights, Water Resources, and Drinking Water

Water Use Online Reporting System

Revised: February 9, 2020

[Click HERE to begin online data entry.](#)

The State of Utah's Department of Environmental Quality and Natural Resources are working in a cooperative effort to obtain annual water use data from public water supply systems in the state. A cooperative effort is also in place to collect water use data from industrial and large private water users. Information obtained from the survey will be used in reports prepared by the agencies and will be made available to other agencies and organizations.

Your response to this survey is required under Rule [R309-105-15](#) of the Utah Administrative Code if you are a public water supplier or under Statute [73-5-4](#) and [73-5-8](#) if you use water from any river or water source and you have been requested by the State Engineer to report your water use. It is important to complete each section of the survey as fully as possible. Please complete entry of information by March 31, 2022. If you are no longer the manager of this system, please forward the information to the new manager, or notify the Division of Water Rights so contact records can be updated.

Your cooperation in filling out this form accurately and completely will greatly assist the planning of several state financial assistance programs, the preparation of basin water plans, and the assessment of water supply and water use in the state.

If you have any questions or suggestions regarding this survey, please contact Brandon Mellor at (801) 927-7433.

For further information on available financial assistance for drinking water projects, please contact the following individuals:

Utah Drinking Water Board	Michael Grange	(801) 536-4200	mgrange@utah.gov.
Utah Board of Water Resources	Val Anderson	(801) 538-7292	valanderson@utah.gov
Community Impact Board	Keith Burnett	(801) 538-8725	kjburnett@utah.gov
Community Development Block Grant Program	Keith Heaton	(801) 538-8732	kheaton@utah.gov
Rural Development (formerly Farmers Home Ad.)	Bonnie Carrig	(801) 524-4326	bonnie.carrig@ut.usda.gov

Utah Division of Water Rights | 1594 West North Temple Suite 220, P.O. Box 146300, Salt Lake City, Utah 84114-6300 | 801-538-7240

[Utah.gov](#) | [Natural Resources](#) | [Contact](#) | [Terms of Use](#) | [Privacy Policy](#) | [Accessibility Policy](#) | [Translate Utah.gov](#)



Water Records/Use Information Viewer

Data Export Filter Options

System Name	System ID	Status	Type	County	Review Status	Contact to Assist	Year Last Visited
Paradise West Home Owner's Association (PWS 03103)	11178		Public	Cache	Completed		
Paradox Midstream LLC	2180		Industrial	San Juan	Visited & Completed		2022
Paragonah Municipal Water System (PWS 11014)	1293		Public	Iron	Visited & Completed		2022
Paria Valley Livestock Company	10874		Industrial	Kane	Visited & Completed		2022
Park City Water System (Culinary) (PWS 22011)	1260		Public	Summit	Visited & Completed		2022
Park City Water System (Irrigation)	11459		Secondary	Summit	Visited & Completed		2022
Park West Water Company (PWS 11009)	1195	Inactive	Public	Iron	Nothing Reported		
Park James & Tori	10984	Inactive	Mgt Plan	Kane	Nothing Reported		
Parley's Recreation Partners LLC	11037		Industrial	Summit	Completed		
Parowan Municipal Water System (Culinary) (PWS 11010)	1287		Public	Iron	Visited & Completed		2022
Parowan Municipal Water System (Irrigation)	11438		Secondary	Iron	Completed		2021
Parrett Steven R. and Mary M.	10946	Inactive	Mgt Plan	Iron	Nothing Reported		
Paskett3p Farm	11219		Industrial	Summit	Visited & Completed		2022
Patterson Construction Inc	11265		Mgt Plan	Utah	Visited & Completed		2022
Paul B. Martinez	11221		Mgt Plan	Carbon	Completed		
Paul R. and Valine Quinn Family Trust (The)	11200		Mgt Plan	Wasatch	Completed		
Paunsaugant Cliffs Special Service District (PWS 09085)	11064		Public	Garfield	Visited & Completed		2022
Payson City (Irrigation)	11427		Secondary	Utah	Visited & Completed		2022
Payson City (Culinary) (PWS 25021)	1166		Public	Utah	Visited & Completed		2022
Payson Fruit Grower's Inc.	10862		Industrial	Utah	Completed		2020
Peak Construction Management LLC	11714		Industrial	Rich	Completed		
Peak Minerals	11226		Industrial	Millard	Visited & Completed		2022
Pehrson Gilbert C.	11125		Mgt Plan	San Juan	Completed		
Pelican 88 Land Company LP	11223		Industrial	Uintah	Visited & Completed		2022
Pelj Edward	11263		Mgt Plan	Carbon	Visited & Completed		2022
Peloquin Steve and Heidi	11042	Inactive	Mgt Plan	Washington	Nothing Reported		
Penzoil Products Company - Roosevelt Refinery	2165	Inactive	Industrial	Duchesne	Nothing Reported		
Peoa Pipeline Company (PWS 22013)	1156		Public	Summit	Visited & Completed		2022
Pepperidge Farms Inc. (PWS 03072)	2162		Industrial	Cache	Completed		2021
Perry City Water System (PWS 02019)	1172		Public	Box Elder	Visited & Completed		2022
Peterson Pipeline Association (PWS 15010)	1243		Public	Morgan	Completed		2021
Peterson Thomas D.	10852		Mgt Plan	Salt Lake	Completed		2020

Utah Division of Water Rights | 1594 West North Temple Suite 220, P.O. Box 146300, Salt Lake City, Utah 84114-6300 | 801-538-7240
[Utah.gov](#) | [Natural Resources](#) | [Contact](#) | [Terms of Use](#) | [Privacy Policy](#) | [Accessibility Policy](#) | [Translate Utah.gov](#)



https://www.waterrights.utah.gov/asp_apps/generalWaterUse/WaterUseList.asp

[Old System View](#)

Public Water Supplier Information

[View Reports](#) [View Sources Map](#) [Show Inactive Sources](#) [Print/View PDF](#) [Quit System](#)

System Summary

System Name: **Provo City Water Resources Division (Culinary)**

Address: 1377 South 350 East

City, State, Zip: Provo, UT 84606

Business Phone: (801) 852-6780 Ext:

Email Address: Ryork@provo.org

Supervisor Name: Gary Calder

Title: Director

Contact Name: Ryan York

County: Utah

Water Right System ID: 1010

Public Water System ID: 25006

DEQ Category: Community

Annual Retail Connection Info (Not Avail: means that at least one of the values needed to calculate ERC is 0)

Year	Residential	Commercial	Industrial	Institutional	Stock	Wholesale	Other	Unmetered	Total	ERC Value
2021	17452	1836	11	131	--	--	--	--	19430	27168.05
2020	16950	1896	15	193	--	--	--	--	19054	26190.68
2019	17483	1936	17	171	--	--	--	--	19607	29659.27
2018	17337	1936	17	179	--	--	--	--	19469	29502.96
2017	17082	1887	17	190	--	--	--	--	19176	28722.87
2016	16978	1880	17	186	0	0	0	0	19061	28999.96
2015	17082	1836	20	192	0	0	0	0	19131	28330.31
2014	17050	1836	18	110	0	0	28	0	19042	29507.84
2013	16866	1773	18	119	0	0	28	0	18804	29042.92
2012	16812	1776	17	114	0	0	28	0	18747	28201.10
2011	16735	1763	17	114	0	0	27	0	18656	28727.40
2010	16663	1769	17	114	0	0	10	0	18573	29372.08
2009	16616	1882	17	114	0	0	0	0	18629	28394.51
2008	16980	1758	17	114	0	0	0	0	18869	29234.66
2007	16434	1672	17	112	0	0	0	0	18235	28224.70
2006	16320	1742	17	112	0	0	0	0	18191	28414.86
2005	16031	1860	20	107	0	0	0	0	18018	31886.31

About GPCD Population Estimates

How does water use relate to population?

People use water at their homes, at their workplace, to produce things, and for recreation. Using gallons per capita per day (GPCD) to represent water use for an area is a standard practice among water professionals. The GPCD calculation includes two pieces: population and water use. The population component used by the Division of Water Resources is the full-time, permanent population of the area. It does not count visitors or commuters. Visitor and commuter use is equally spread among the permanent population for the area. The water component includes all water use for the area: residential use inside a home, outside residential use for the home (yard and garden), parks, government buildings (inside and outside), schools (inside and outside), businesses, offices, churches, and industries. These uses, measured in gallons, are added together and divided by the population.

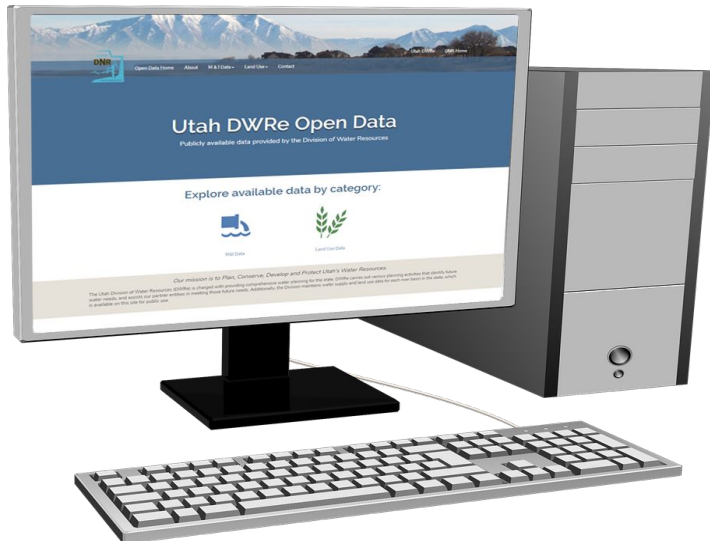


<https://dwre-utahdnr.opendata.arcgis.com/pages/population-data>

Open Water Data Website

water.utah.gov/opendata

- **Interactive Web Mapping Applications**
Visually explore the data and view summary statistics (by river basin, county, retail supplier, and more)
- **Downloadable Data** (shapefiles, spreadsheets)



Utah Aqua Spots

Storymap of unique water features across the state



Interactive Map Application

For viewing Statewide Water-Related Land Use Data collected with the new CDL methodology (2017-2020)



Municipal and Industrial Water Data

- 2019 Culinary Suppliers
- 2019 County Summary
- 2019 State Summary
- 2019 Basin Summary

Current Offerings:



- Water Related Land Use (WRLU) Data
 - Historical Inventory Data
 - 2017-2021 Statewide WRLU Datasets



- Municipal and Industrial Water Data
 - 2015-2020 (2021 coming soon)




- Water Budget Data
 - Historical Data thru 2018
 - (2019 update coming soon)



SHARE

Combine Web Pages, Map, Apps, Dashboards and more




 [Home](#) [About](#) [Municipal and Industrial Water Use](#) [Water-Related Land Use](#) [Water Budget](#) [More](#) [Contact Us](#)


Utah's Open Water Data

Publicly available data provided by the Utah Division of Water Resources


Explore Open Water Data



Municipal and Industrial Water Use



Water-Related Land Use



Water Budget



water.utah.gov/opendata = <https://dwre-utahdnr.opendata.arcgis.com/>



Municipal and Industrial Water Use

Download
Data

Water Use
Apps

Current
Service Area
Boundaries

About
Population
and GPCD

The Utah Division of Water Resources has analyzed water use data every five years since 1990; however, the 2015 data set marks a significant methodologic and data accuracy milestone. This section contains an analysis of residential, institutional, commercial and industrial water use data gathered by the Utah Division of Water Rights beginning with 2015 and updated yearly. Click the links above to download and explore data related to Utah's Municipal and Industrial Water Use patterns.

About Municipal and Industrial Water Use Data

Water Resources uses an updated and improved water data collection methodology based on recommendations from a 2015 Legislative Audit, 2017 Legislative Audit Update, and a 2018 third-party process review. Improvements to the data include enhanced data collection by Water Rights, updates to secondary water estimates, and vacation home water-usage.

While the Division is encouraged by these enhancements, changes in methodology make comparisons between past water use data problematic. As a result, the Division will be using the 2015 M&I data as the new baseline for future analysis and planning purposes.



<https://dwre-utahdnr.opendata.arcgis.com/>



Water-Related Land Use Data

Download
Data

Land Use
Apps

About the
CDL Method

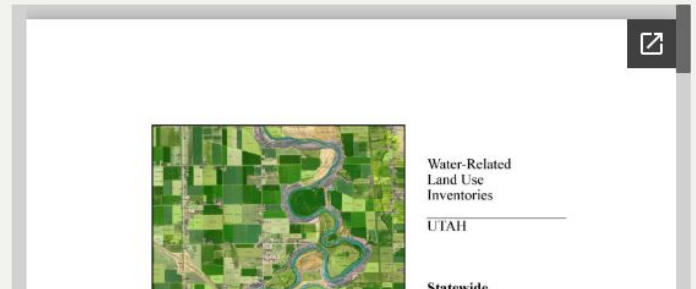
Land Use
Storymap

The Utah Division of Water Resources regularly collects information on water-related land uses. This provides yearly data detailing land cover in agricultural areas. The 2017 data set marks a significant methodological change which allows for yearly statewide coverage. Click above to download the data or explore the data with our interactive apps. Continue below to learn more about how and why this data is made along with its history.

About the Water-Related Land Use Program

What is the Water-Related Land Use Program?

Since 1967, the Utah Division of Water Resources (DWRe) has collected information on Water-Related Land Uses (WRLU) including the types and extent of irrigated crops as well as information concerning dry agriculture, wetlands, open water, and urban areas. This information is gathered for various planning purposes including determining cropland water use, evaluating irrigated land losses and conversion to urban uses, planning for



<https://dwre-utahdnr.opendata.arcgis.com/>



Utah's Water Budget

Download
Data

Water Budget
Apps

More Content
Coming Soon!

The Utah Division of Water Resources Water Budget Model tracks or estimates surface and groundwater diversion, return flow, consumptive use, yield, and natural system use within Utah and the Bear River Basin for agricultural, municipal, and industrial water uses. This information is used to formulate plans for conservation, demand reduction, repurposing of water use, interbasin transfers, and other planning activities. Check back soon for more interactive public data.

About the Utah Water Budget Model

The Utah Division of Water Resources developed a Water Budget Model for State, Basin, and County level water planning purposes. The Water Budget Model assists in better understanding the amount of surface water and groundwater used by major sectors (e.g., municipal and agricultural). Understanding water diversions and depletions (water removed from the system through consumption, evaporation or evapotranspiration), is fundamental to water planning. Investigating the trends and effects of land use change over time, water conservation practices, changes in irrigation methods, and yield are possible by

<https://dwre-utahdnr.opendata.arcgis.com/>





Water Resource Map Gallery

Maps Created and Maintained by the Utah Division of Water Resources.



Weekly Lawn Watering Guide

This month's featured application: Weekly Lawn Watering Guide

Did you know 60% of residential water use in Utah is used for outdoor irrigation? Eliminating just one watering (1/2" of water) can save about 3,000 gallons for the average quarter-acre Utah yard! The Utah Division of Water Resources puts out a weekly guide to help homeowners appropriately water their lawns using evapotranspiration rates, forecasted weather, and forecasted precipitation while we are under drought conditions.

Check your local providers for watering guides specific to your neighborhood before irrigating!



Utah Aqua Spots

Storymap of unique water features across the state



Board Project Maps

View Projects funded by the Board of Water Resources



Weekly Lawn Watering Guide

View the Weekly Lawn Watering Guides for the State of Utah



Water Budget Apps and Flow Schematics

Explore the Framework for the DWRe Water Budget





Here are some additional sources for maps and water-related data from the Utah Department of Natural Resources



Precipitation Graphs
Reservoir Levels
Drought Program
Reports and Publications



GIS and Maps
Water Use and Flow Records
Well Information
Groundwater Information



Utah Wetlands Information Center
Groundwater Information
Groundwater and Wetland Maps
Flood Hazards



State Lands: Navigable Waters



Watershed Restoration Initiative
Aquatic Invasive Species
Fishing and Aquatic Species



Boating Program
Aquatic Invasive Species



Cumulative Hydrologic Impact
Assessments



Utah DNR Geospatial Portal
Utah DNR Map and Bookstore

Other Sources of GIS and Water Data from outside the DNR:

Utah Geospatial Reference Center (UGRC) *formerly known as the Utah Automated Geographic Reference Center (AGRC)*

- State Geographic Information Database (SGID)

United States Geological Survey (USGS)

- Stream Stats
- National Water Information System (NWIS)



<https://dwre-utahdnr.opendata.arcgis.com/>



We want to hear from YOU!

Help us improve Utah's Open Water Data Website:

How are you using Utah's Open Water Data?

What were you looking for? Did you download any data?

1000

Rate the ease of use of our website:

Did you find what you were looking for?



How can we improve our services?

1000

Where did you first hear about Utah's Open Water Data Website?



VISUALIZE

Maps, Apps, Dashboards and more



Municipal and Industrial Water Use Apps

The Division of Water Resources now has multiple ways to explore, chart, summarize and analyze water use data. The Division of Water Rights is available and supported by the Utah Division of Water Resources. Use the [Quick Guide](#) to learn more about features available with these apps.

Apps are built with data gathered by the Utah Division of Water Resources in GIS applications by the [Quick Guide](#) below.



Interactive Map Application

for M&I Water Use Data



Interactive Map Application

for M&I Water Use Data



Interactive Map Application

for M&I Water Use Data



Interactive Map Application

for M&I Water Use Data



Interactive Map Application

for M&I Water Use Data



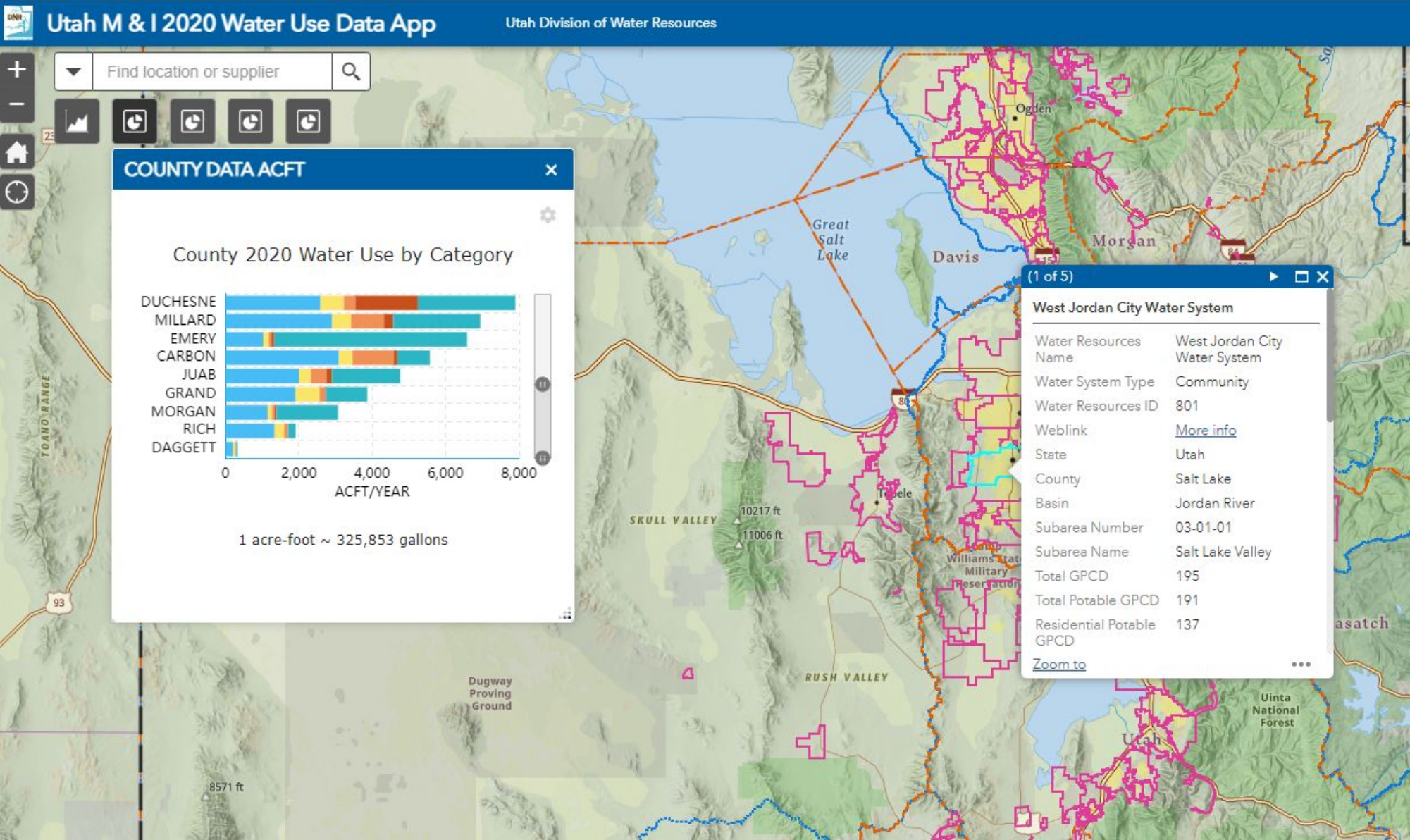
Interactive Map Application

for M&I Water Use Data



Regional Conservation Goals Dashboard





<https://utahdnr.maps.arcgis.com/apps/webappviewer/index.html?id=bb8f18f6e2df4c6ca92fa8e935540bae>

Quick guide to using the M&I Applications:

Utah's 2018 Municipal and Industrial Water Use Data Mapping Application | Utah Division of Water Resources

Search Place or Supplier

Use your current location to find local water suppliers on the map

Search the map for individual water suppliers or geographic regions

Click the widget icons to explore interactive charts and stats

View all map layers, switch the basemap, and more!

Select boundary lines on the map to open a popup window with detailed summary statistics for geographic regions

As you move around the map, charts will reflect regions in view

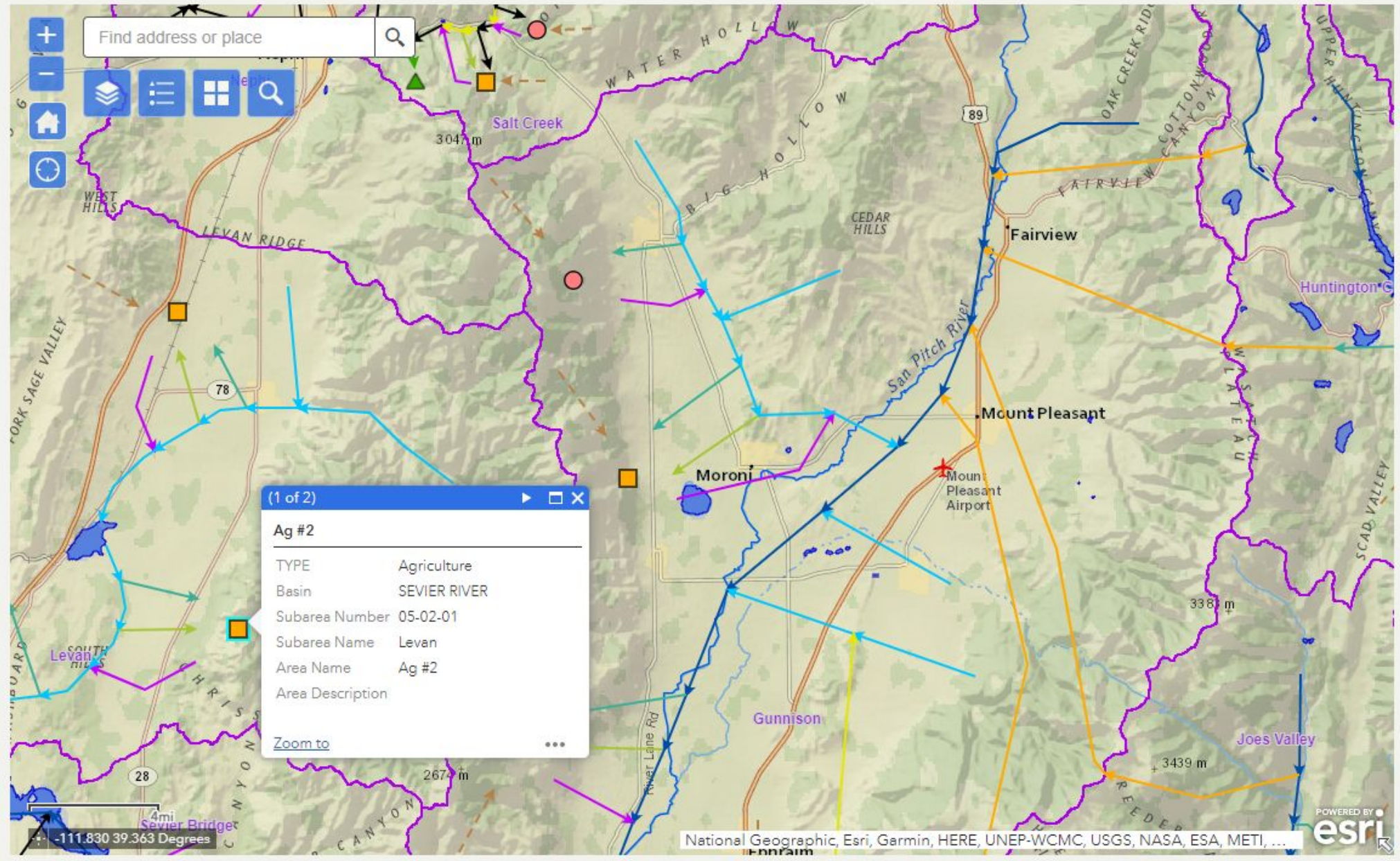
Use button in the popup window to explore available boundary summaries for clicked point (*example shows 1 of 4 boundaries)

Alta Town Water System	
Water System Type	Community
Water Resources ID	825
Weblink	More info
State	Utah
County	Salt Lake
Basin	Jordan River
Subarea Number	03-01-07
Subarea Name	Little Cottonwood Creek
Total GPCD	187
Total Potable GPCD	187
Residential Potable GPCD	17
Commercial Potable	110
Zoom to ***	

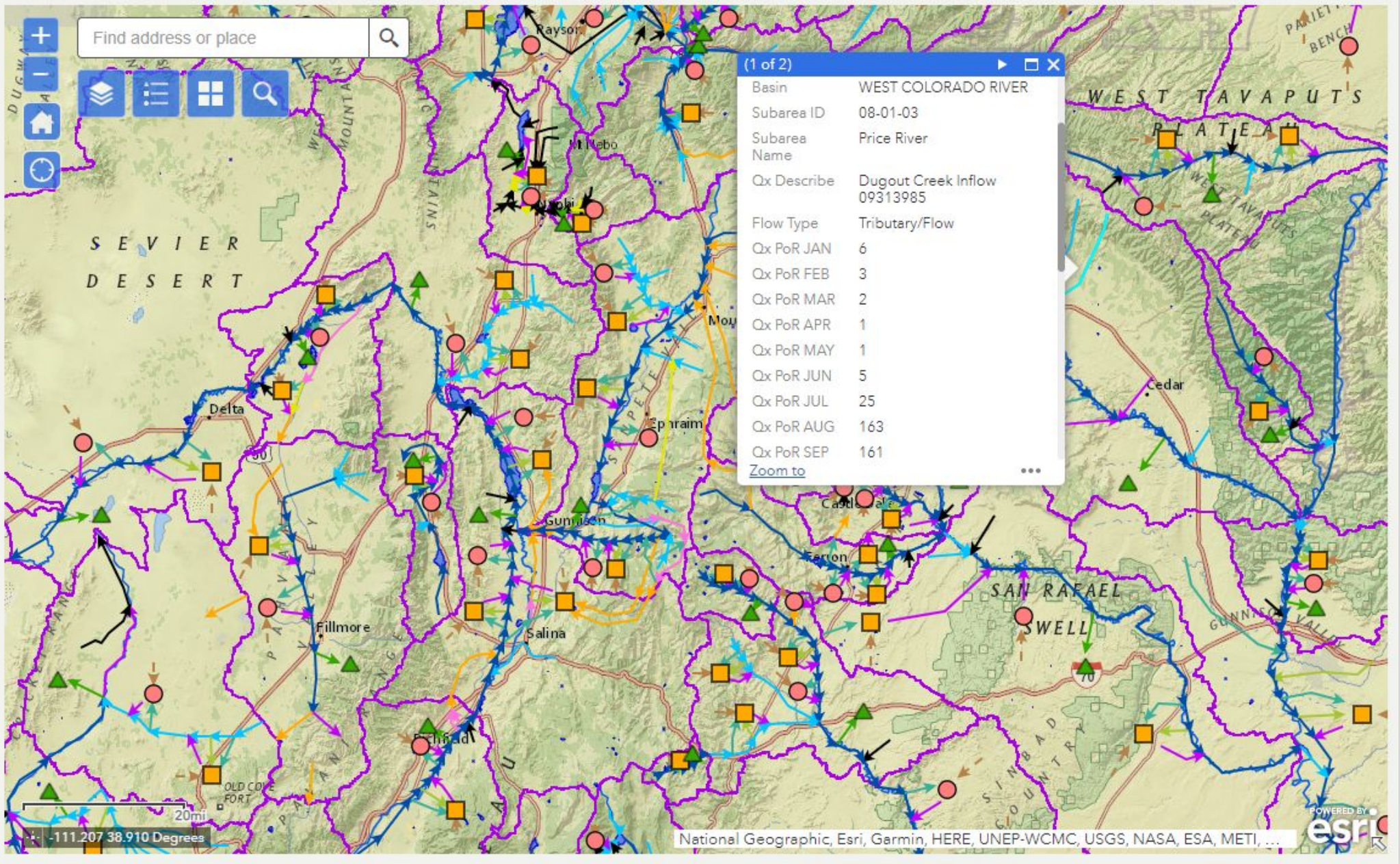
Utah Division of Water Resources, Utah Department of Natural Resources, (Data Steward) | Uta...



<https://utahdnr.maps.arcgis.com/apps/webappviewer/index.html?id=bb8f18f6e2df4c6ca92fa8e935540bae>



<https://dwre-utahdnr.opendata.arcgis.com/pages/water-budget-apps>



<https://dwre-utahdnr.opendata.arcgis.com/pages/water-budget-apps>

QUERY

Out of the Box



Utah DNR Online Maps

Filters

MnlReport2019 CulinaryWaterSuppliers

Filters

Styling

Filter as map moves ⓘ



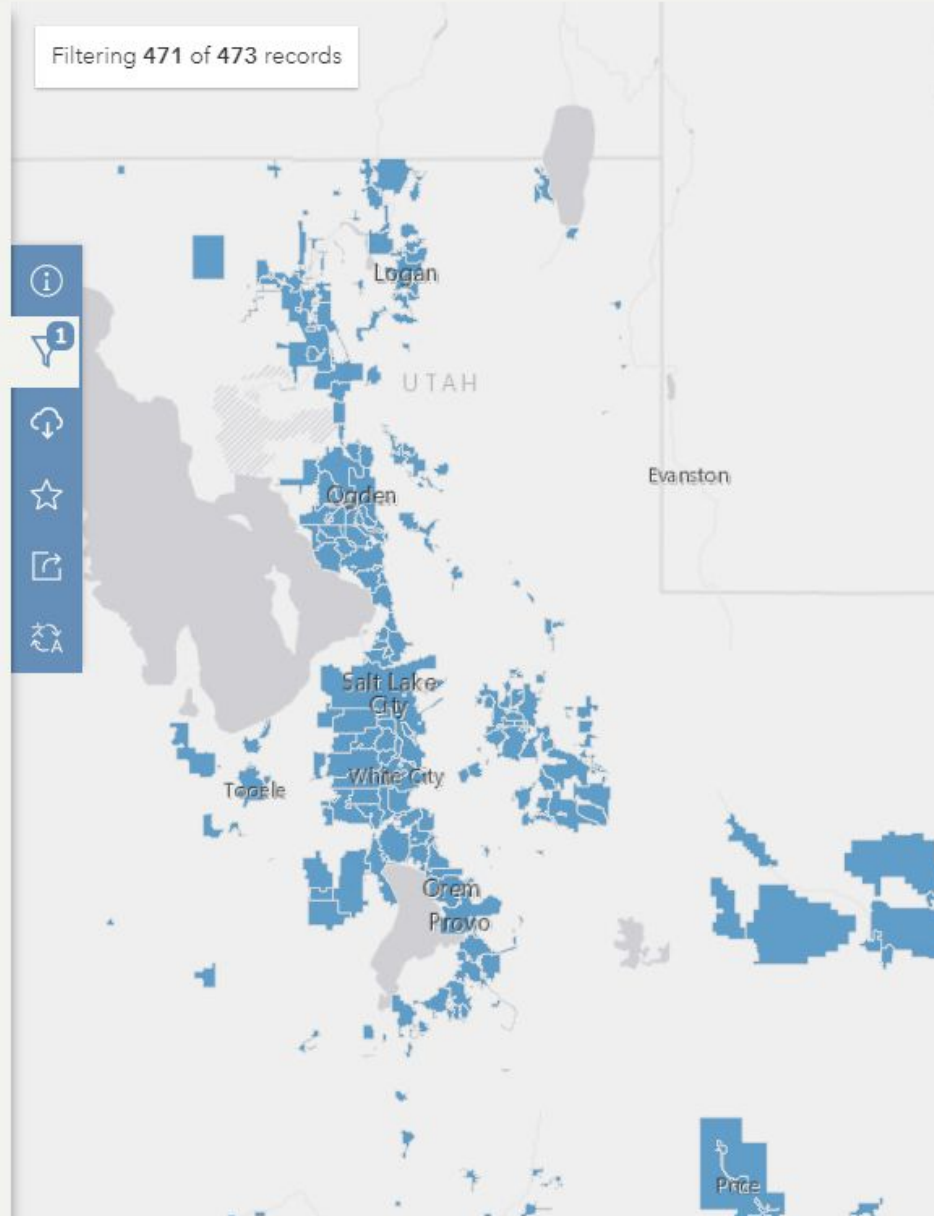
Water System Type

- C 99.58%
- NC 0.21%
- NP 0.21%

Select attribute filters (31)

- Water Resources Name 473 values
- Water System Type 3 values
- Water Resources ID 123
- Weblink 471 values
- State 1 values
- County 29 values

Filtering 471 of 473 records



<https://dwre-utahdnr.opendata.arcgis.com/pages/municipal-and-industrial>

DOWNLOAD

Multiple Formats Auto Generated





Home

About

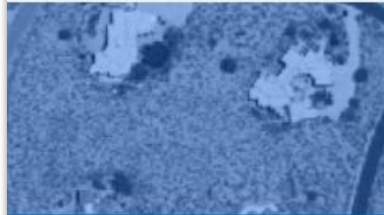
Municipal and Industrial Water Use ▾

Water-Related Land Use ▾

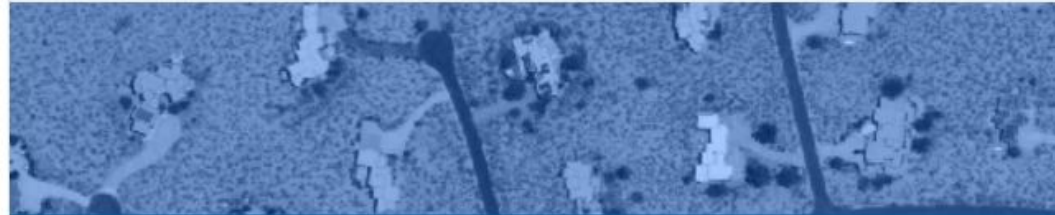
Water Budget ▾

More ▾

Contact Us



- About Municipal and Industrial Water Use
- Download the Data
- View Interactive Apps
- About Water Supplier Boundaries
- About GPCD Population Estimates



Municipal and Industrial Water Use

Download
Data

Water Use
Apps

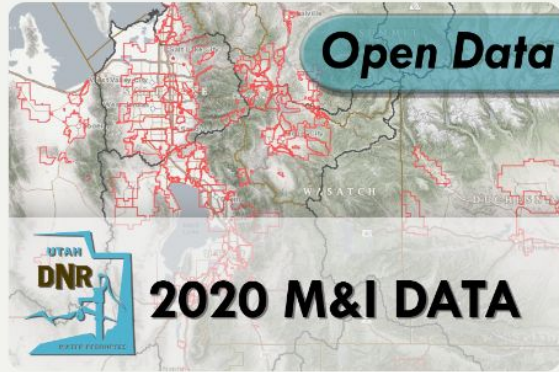
Current
Service Area
Boundaries

About
Population
and GPCD

The Utah Division of Water Resources has analyzed water use data every five years since 1990; however, the 2015 data set marks a significant methodologic and data accuracy milestone. This section contains an analysis of residential, institutional, commercial and industrial water use data gathered by the Utah Division of Water Rights beginning with 2015 and updated yearly. Click the links above to download and explore data related to Utah's Municipal and Industrial Water Use patterns.



<https://dwre-utahdnr.opendata.arcgis.com/pages/municipal-and-industrial>



2020 Municipal and Industrial Water Use



DWRe Utah Division of Water Resources
Utah DNR Online Maps

Summary

Water use and supply data for 2020 joined to water supplier, county, basin, and state boundaries.

Water use and supply data for 2020 joined to spatial boundaries. GPCD = Gallons Per Capita Day or Gallons Per Person Per Day. Supply and Use numbers are in Acre Feet Per Year (ACFT).

This database contains municipal, institutional, commercial and industrial water use data gathered by the Utah Division of Water Rights for the 2020 calendar year. The Utah Division of Water Resources has analyzed water use data every five years since 1990; however, since 2015 the division uses a significantly different methodological and data accuracy system.

[Read More](#) ▾

Looking for something else? See other maps nearby →

Layers 4

MnlReport2020_CulinaryWaterSuppliers

MnlReport2020_Counties

Details

Map
Feature Service

June 9, 2022
Date Updated

April 20, 2022
Published Date

Public
Anyone can see this content

CC BY-SA 4.0 License
[View license details](#)

Relevant Area



Utah DNR Online Maps

Records: 473

Toggle Filters:

CSV

File created: Jul 21, 2022, 17:26

File size: 36.5 KB

Download

KML

File created: Jul 21, 2022, 17:26

File size: 770.4 KB

Download

Shapefile

File created: Jul 21, 2022, 17:26

File size: 546.4 KB

Download

GeoJSON

File created: Jul 21, 2022, 17:27

File size: 985.2 KB

Download

File Geodatabase

File created: Jul 21, 2022, 17:26

File size: 470.0 KB

Download



<https://dwre>

<https://opendata.utah.gov/>

[/pages/municipal-and-industrial-data](https://opendata.utah.gov/pages/municipal-and-industrial-data)





Utah Water & Power Board

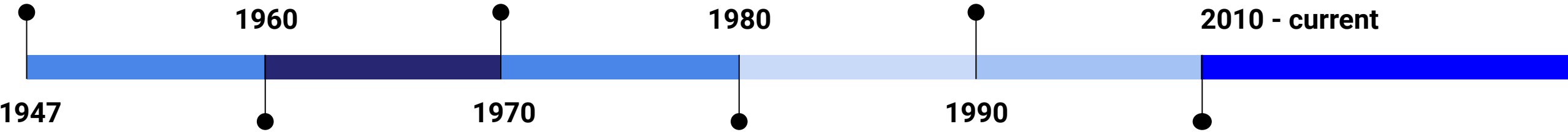
Creation of Utah Water and Power Board, along with the Revolving Construction Fund.

Cities Water Loan Fund and Conservation & Development funds created.

Long Park Dam, Woodruff Narrows Dam enlarged, Ken's Lake Dam

Dam Safety standards modified, Upgrade Funds provided

Quail Creek Dike reconstruction after failure, Dam Safety Upgrades of Piute, Long Park, and Porcupine Dams



1960

1980

2010 - current

1947

1970

1990

Name changed to Board of Water Resources

Porcupine, Woodruff Narrows, Woodruff Creek, Silver Lake Flat, Big Sand Wash

\$153M to 325 projects

Quail Creek Dike, Recapture Dam, Grantsville Dam, Smith-Morehouse Dam enlarged

\$355 M to 186 projects

Municipal upgrades for Payson, Murray and American Fork, Dam Safety Upgrades of Millsite and DMAD Dams, Murdock Canal Enclosure Project and first water bank approved!

