

# Colorado's Water Data Initiatives

National Water Use Data Workshop  
August 17, 2022

**Brian Macpherson, P.E.**  
Decision Support System Specialist,  
Colorado Water Conservation Board  
[Brian.Macpherson@state.co.us](mailto:Brian.Macpherson@state.co.us)



**COLORADO**  
Colorado Water  
Conservation Board  
Department of Natural Resources



**COLORADO'S**  
Decision Support Systems  
CWCB / DWR

---

**Data Centered • Transparent • Reproducible**

- Joint program between Colorado Water Conservation Board (CWCB) and Colorado Division of Water Resources (DWR)
- Approximately 120 water commissioners (from Colorado's DWR) gather data and administer rivers
- The CWCB performs planning studies and uses water data for use in modeling and quantification of water use and demands

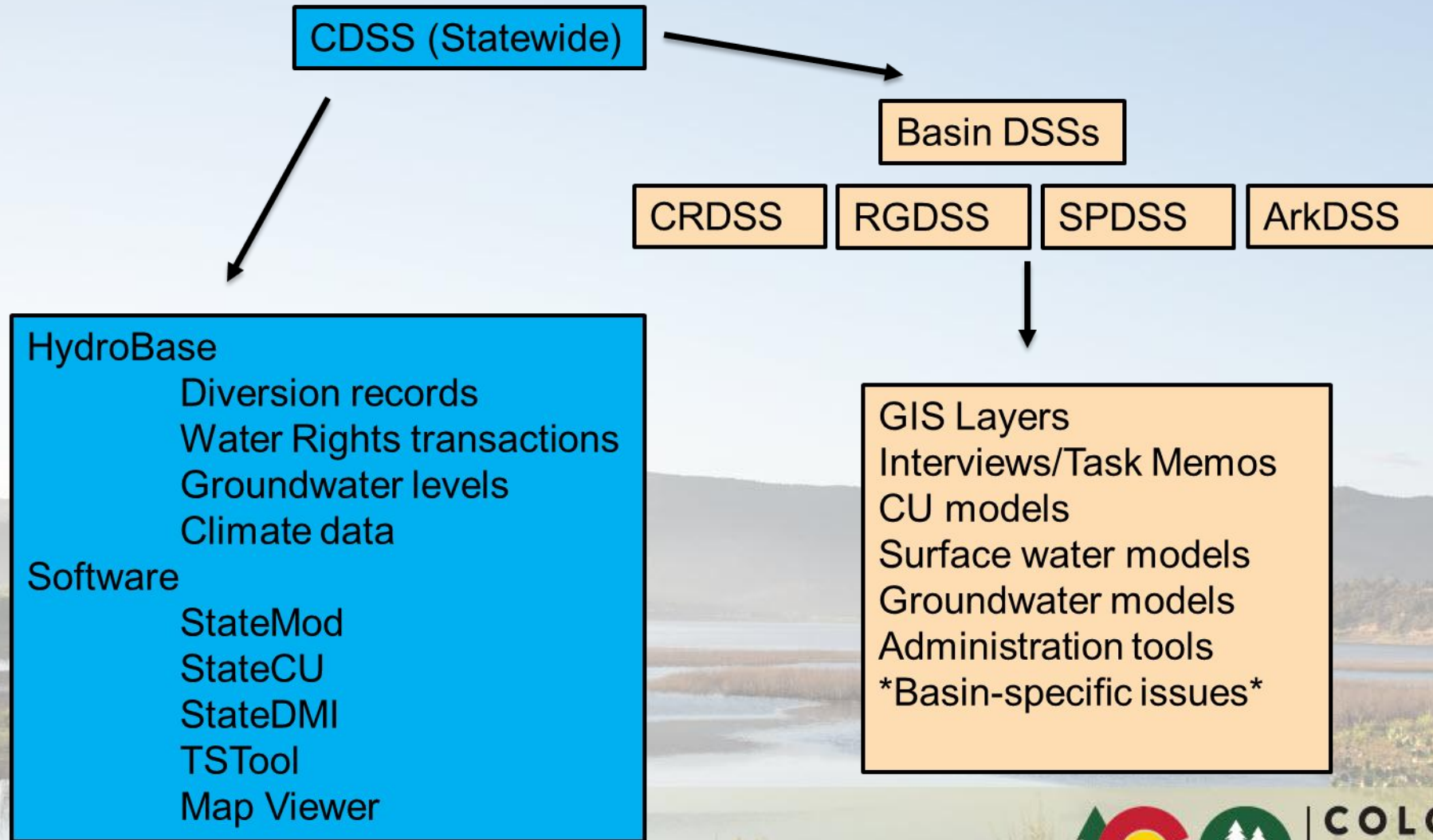


# Colorado's Decision Support Systems (CDSS) History

- Colorado River Decision Support Systems (CRDSS) Feasibility Study 1992-1993 (Dames & Moore and CADSWES)
- Enhancements have typically come through Basin DSS efforts
  - CRDSS (CO River) in 1993
  - RGDSS (Rio Grande) in 1998
  - SPDSS (South Platte River) in 2001
  - ArkDSS (Arkansas River) in 2011
- CDSS was created to streamline data and tools statewide



# Basin DSS Approach



# CDSS Tools

- HydroBase (SQL database)
- Online Data Tools
- GIS / Map Viewer
- Crop Consumptive Use Modeling (StateCU) Datasets
- Water Allocation Modeling (StateMod) Datasets
- Supporting software (TSTool, StateDMI, StateDGI, Lease Fallow Tool, etc.)

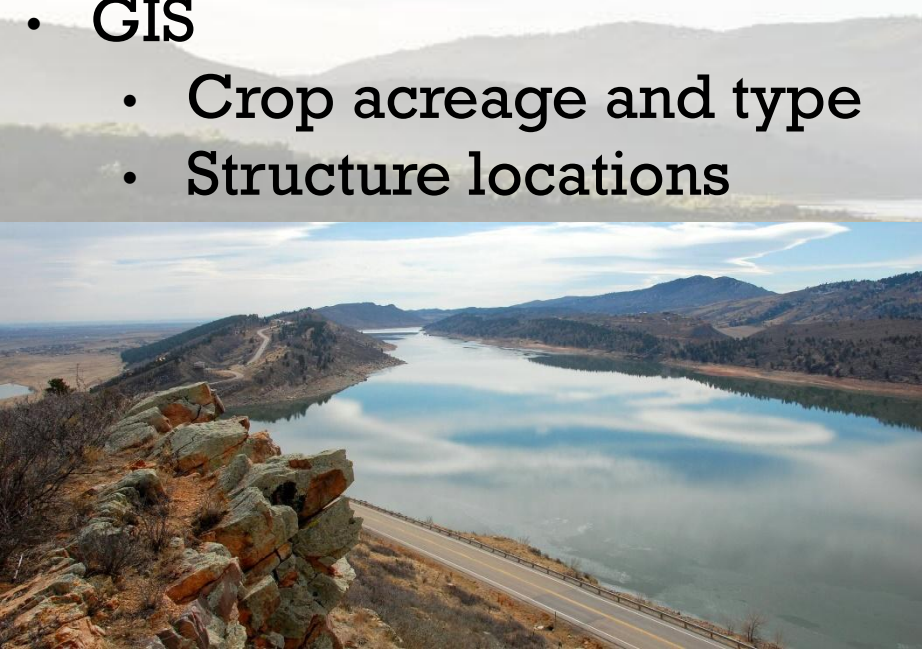
Publicly available at:  
**[cdss.colorado.gov](http://cdss.colorado.gov)**



**COLORADO**  
Colorado Water  
Conservation Board  
Department of Natural Resources

# HydroBase Data Types

- Diversions
- Well Metering
- Streamflow
- Reservoir Stage and Releases
- Water Rights
- Call Chronology
- Aquifer Levels
- Climate data
- GIS
  - Crop acreage and type
  - Structure locations



# Online Data Tools

- Query and visualization of HydroBase
- Call Analysis Tool
- Aquifer Determination Tool
- My Stations / Alerts
- Colors of Water
- REST Web services

[dwr.state.co.us/Tools](http://dwr.state.co.us/Tools)



**COLORADO**  
Colorado Water  
Conservation Board  
Department of Natural Resources



### Administrative Calls

Active, Historical & Analysis Tools



### Climate Stations

Temperature, Precipitation, Snow, Etc



### Dam Safety

Dams, Livestock Water, Erosion Control



### Groundwater

Water Levels & Geophysical Logs



### Stations

Current Conditions & Historical Data



### Structures

Diversion Records & Other Details



### Water Rights

Decree Details, Court Docs, Net Amounts



### Well Permits

Application History & Well Details



### Map Viewer

DWR Online GIS Products



### Aquifer Determination

Denver Basin & Dakota/Cheyenne



### Call Analysis Tools

Structure and Water Source Analysis



### Information Marketplace

DWR Data on "CIM" Platform



### Location Tools

Coordinates & Distance Calculators



### My Stations

Station Lists and Alerts



### REST Web Services

GET CDSS Data Programmatically





**Water Right Name:** GUNNISON RIVER (NAT PARK) (6201498)

**Permit:**

**Structure Type:** Minimum Flow

**Water Source:** GUNNISON RIVER

▶ Location

▼ Water Right Net Amounts

Structure Overview **Diversion Records** Water Rights Measuring Points Irrigated Lands Imaged Documents

**Structure Name** MOFFAT WATER TUNNEL (5104655)

**Associated Permits**

**Structure Type** PIPELINE

**Water Source Type** Tributary

**CIU Code** Active Structure with contemporary diversion records (A)

**Water Source** FRASER RIVER [00178386] @ Stream Mile: 25.36

Search Fields

Record Type: Diversions - Summary

Full Record: 1975 to 2017

From 1975 To 2017

Totals  Water Classes

Include all associated water classes

Water Class

5104655 S:1 F: U:0 T: G: To:	+
5104655 S:1 F: U:2 T: G: To:	+
5104655 S:1 F: U:Q T: G: To:	+
5104655 S:1 F: U:Q T: G: To:5101327	+
5104655 S:1 F: U:Q T:0 G: To:	+

1 - 5 of 18 items

Search

Graph Options

Title: MOFFAT WATER TUNNEL (5104655) - T

Y Axis Max

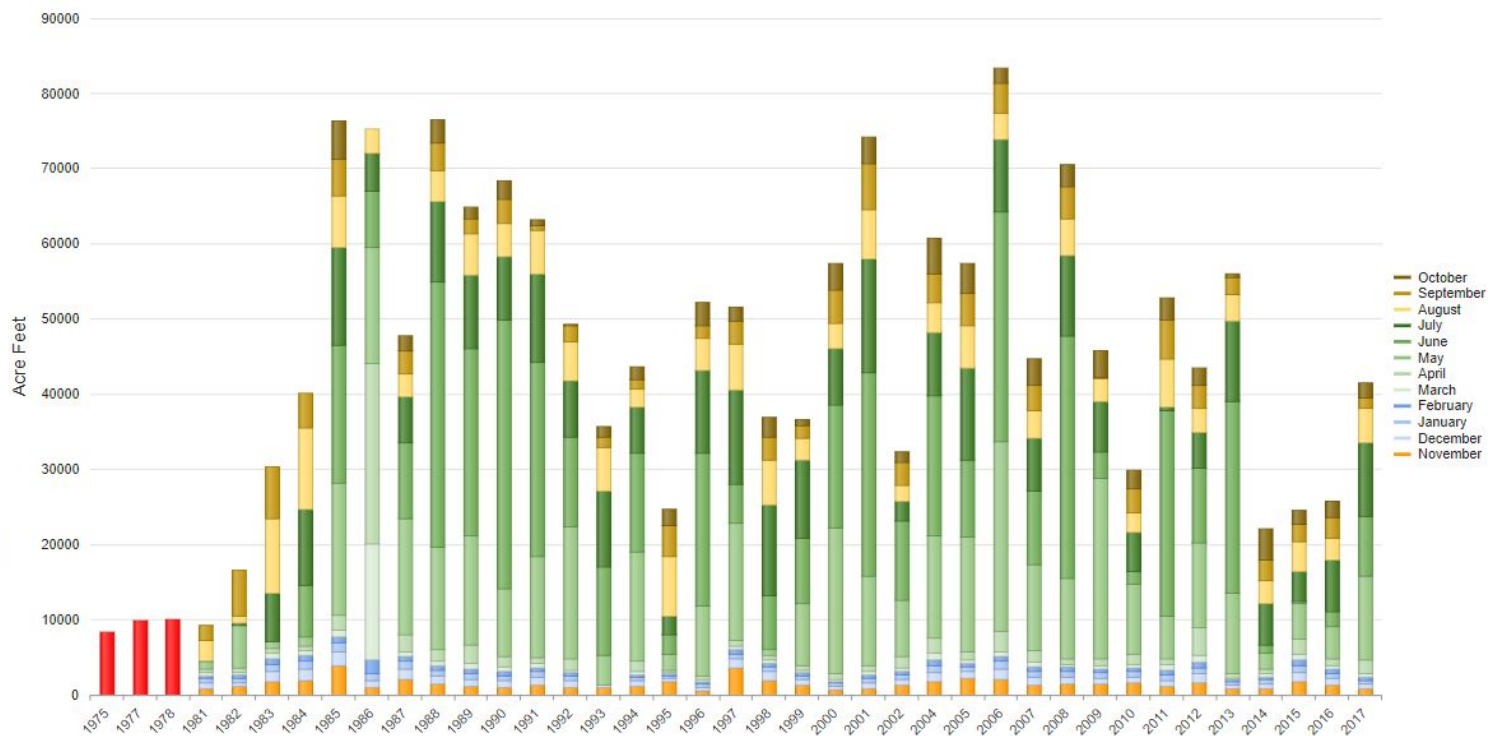
Y Axis Min

Refresh

Table Graph

PDF

MOFFAT WATER TUNNEL (5104655) - Total (Diversions)



# Administrative Calls - Active

Export Help My Account

>> Table Map

Map Options



Map Points: 46





Navigation

Home Identify Pan Zoom In Zoom Out Initial View Previous Extent Next Extent Bookmarks

Sharing

Export Upload Data Add Layers Layer Catalog Share Print



>

**Quick Tools**

Structure Ditch CENTENNIAL D ✕

Name = CENTENNIAL D  
 WDID = 2000566  
 Current-in-Use = Active Structure with contemporary diversion records (A)  
 Water Source = RIO GRANDE [01385432]  
 Assoc Permit =  
 Assoc Case No = 05/01/1896, 79CW0091  
 Location Accuracy = GPS

[Add to Results](#) | [View Additional Details](#)



Navigation

Home Identify Pan Zoom In Zoom Out Initial View Previous Extent Next Extent Bookmarks

Sharing

Export Upload Data Add Layers Layer Catalog Share Print

2017 Irrigated Land POTATOES



Description

Crop type = POTATOES  
Irrig type = SPRINKLER  
Acres = 119.8007

Details

CAL\_YEAR  
2017

DIV  
3

DISTRICT  
20

PARCEL\_ID  
32001249

MASTER\_ID  
1109

CROP\_TYPE  
POTATOES

CROP\_SRC  
NASS

Imagery

UTM Zone 13, NAD83 ▲ X 406125.82471 Y 4164816.46117

Scale 1: 36,112 Go



# StateCU (CU Modeling)

- Consumptive Use modeling software produced by Colorado
- Monthly Modified Blaney-Criddle or Daily Penman-Monteith
- **Inputs:**
  - GIS coverage of acreage, crop type, irrigation type, and structure association
  - Climate data
- **Outputs:**
  - Potential consumptive use
  - Supply-limited consumptive use
  - Unlagged return flow
  - Effective Precipitation

Open source licensing and source code:

<http://opencdss.state.co.us/opencdss/>

<https://github.com/opencdss>



# StateMod (Water Allocation Modeling)

- Water allocation modeling software produced by Colorado
- Prior appropriation and Colorado operations (Compacts, augmentation, etc.)
- **Inputs:**
  - Crop/municipal/industrial demands
  - Water Rights
  - Natural Flows
- **Outputs:**
  - Streamflow
  - Diversions
  - Well pumping

Open source licensing and source code:

<http://opencdss.state.co.us/opencdss/>

<https://github.com/opencdss>



**COLORADO**

Colorado Water  
Conservation Board

Department of Natural Resources

# HydroBase REST Web Services

- **REST API - GET and POST**
  - **Allows public to access data (GET) programmatically in things like web applications, spreadsheets, etc.**
    - **JSON, XML, CSV, TSV, GeoJSON**
  - **Allows public to share data (POST) programmatically for things like water rights accounting and well monitoring**
  - **Account Login for API key (higher volume of data), permissions for POST, personalization of webpages**



The CDSS REST services provide HydroBase data programmatically for consumption by outside entities. Users can request data from the services in two ways:

- Enter a properly constructed URL in your browser or other application (such as a spreadsheet)
- Send a properly constructed request object with a header

[Datasets](#)
[Technical Information & Help](#)

## Datasets - All

API	Description	Url Generator	Area
<a href="#">GET api/v2/administrativecalls/active</a>	Returns list of active administrative calls	<a href="#">Active Administrative Calls Generator</a>	Administrative Calls
<a href="#">GET api/v2/administrativecalls/historical</a>	Returns list of historical administrative calls	<a href="#">Historical Administrative Calls Generator</a>	Administrative Calls
<a href="#">GET api/v2/analysiservices/watersourcerouteanalysis</a>	Returns all WDID(s), and their stream mile, located between two different stream locations on the DWR Water Source Framework.	<a href="#">Water Source Route Analysis Info Generator</a>	Analysis Services
<a href="#">GET api/v2/analysiservices/watersourcerouteframework</a>	Returns the DWR source route framework reference table for the criteria specified	<a href="#">Water Source Route Framework Info Generator</a>	Analysis Services
<a href="#">GET api/v2/analysiservices/callanalysisbywdid</a>	Performs a call analysis that returns a time series showing the percentage of each day that the specified WDID and priority was out of priority and the downstream call in priority.	<a href="#">Call Analysis Structure Info Generator</a>	Analysis Services



# Arkansas River Colors of Water Tool

Menu

- Home/Overview
- Colors of Water
- Daily Reports
- Log in

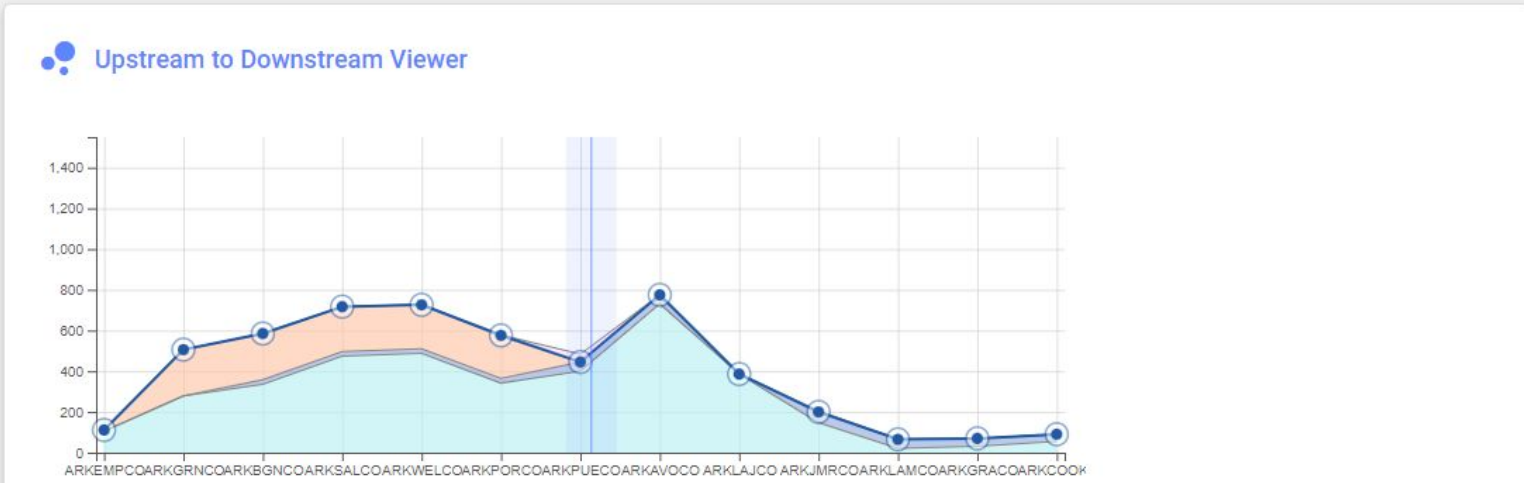
Hide Menu



This site works best in [Google Chrome](#)



View as: Upstream to Downstream | Date: 08/01/2022 | Reach: Arkansas Mainstem



### ARKPUECO

- Native Flow - 400.3 CFS
- Releases - 44.7 CFS
- BOR Project Water - 0 CFS
- Exchanges - 38.7 CFS
- Measured Flow - 445 CFS

[Download Data](#)

Switch to the time series view to download data.

# THANK YOU

**Brian Macpherson, P.E.**

Decision Support System Specialist,  
Colorado Water Conservation Board

[Brian.Macpherson@state.co.us](mailto:Brian.Macpherson@state.co.us)



**COLORADO**

**Colorado Water  
Conservation Board**

Department of Natural Resources